

### PCWA Facilities and Features

- Dam
- Ancillary and Other Facilities
- Powerhouse
- Gage
- Penstock
- Tunnel
- Pipeline
- Gate
- Closure
- Access Point
- Public Safety Fence
- FERC Boundary
- Water Supply Line (above ground)
- Water Supply Line (buried)
- Project Power and Communication Lines:**
- Communication
- Power
- Power (underground)
- Communication/Power
- Communication/Power (underground)

### Transportation

- Non-Project General Access Road
- Project Road
- Project Trail
- Recreation Access Road
- Recreation Water Supply Facility Access Road or Trail
- Recreation Access Trail
- Other Road

### Project Recreation Facilities

- Picnic Area
- Boat Ramp
- Scenic Viewpoint
- Developed Campground
- Trailer Sanitary Station
- Recreation Facility Footprints

### Other Facilities

PG & E Transmission Lines:

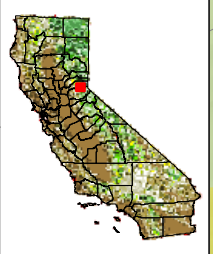
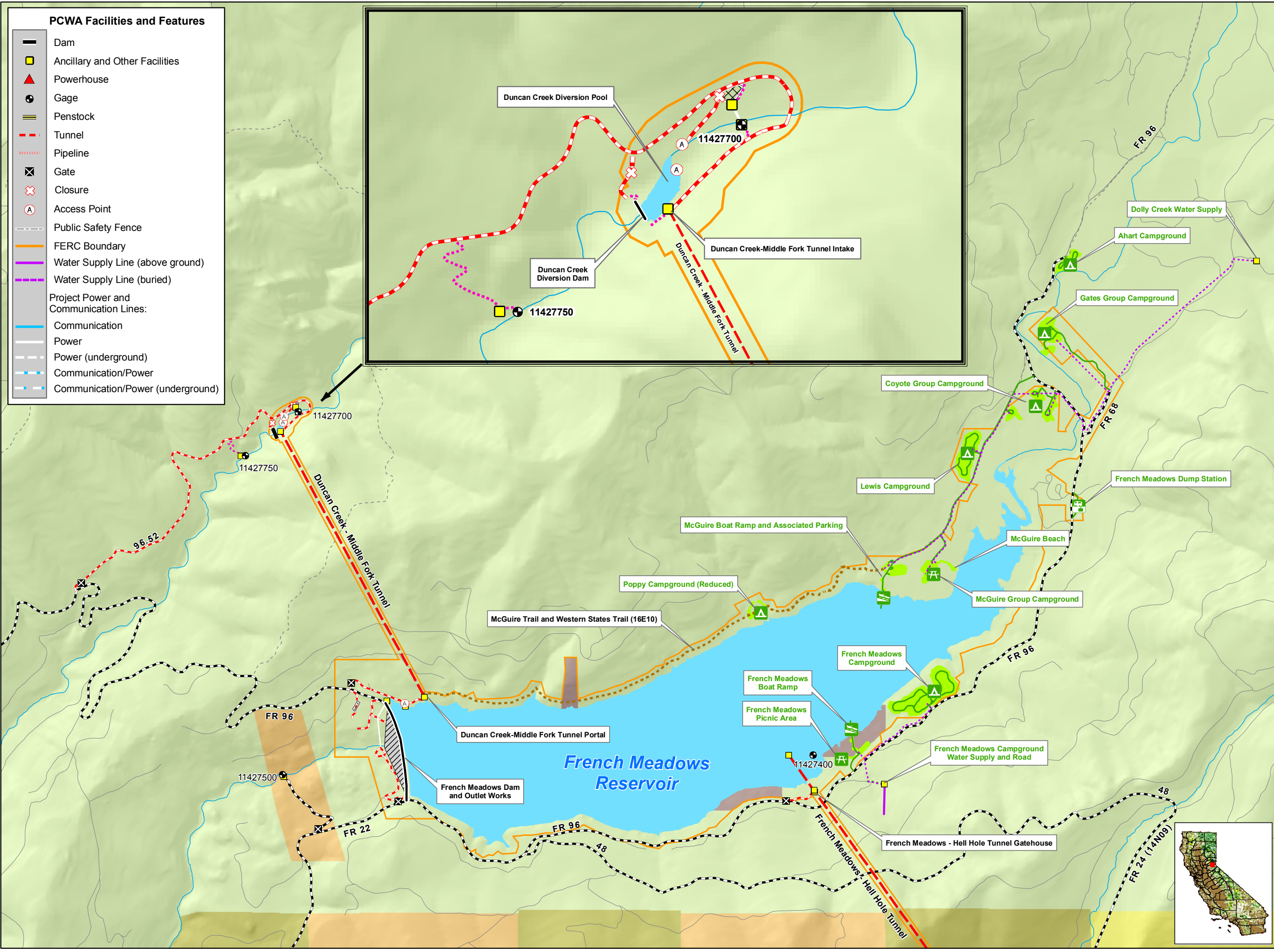
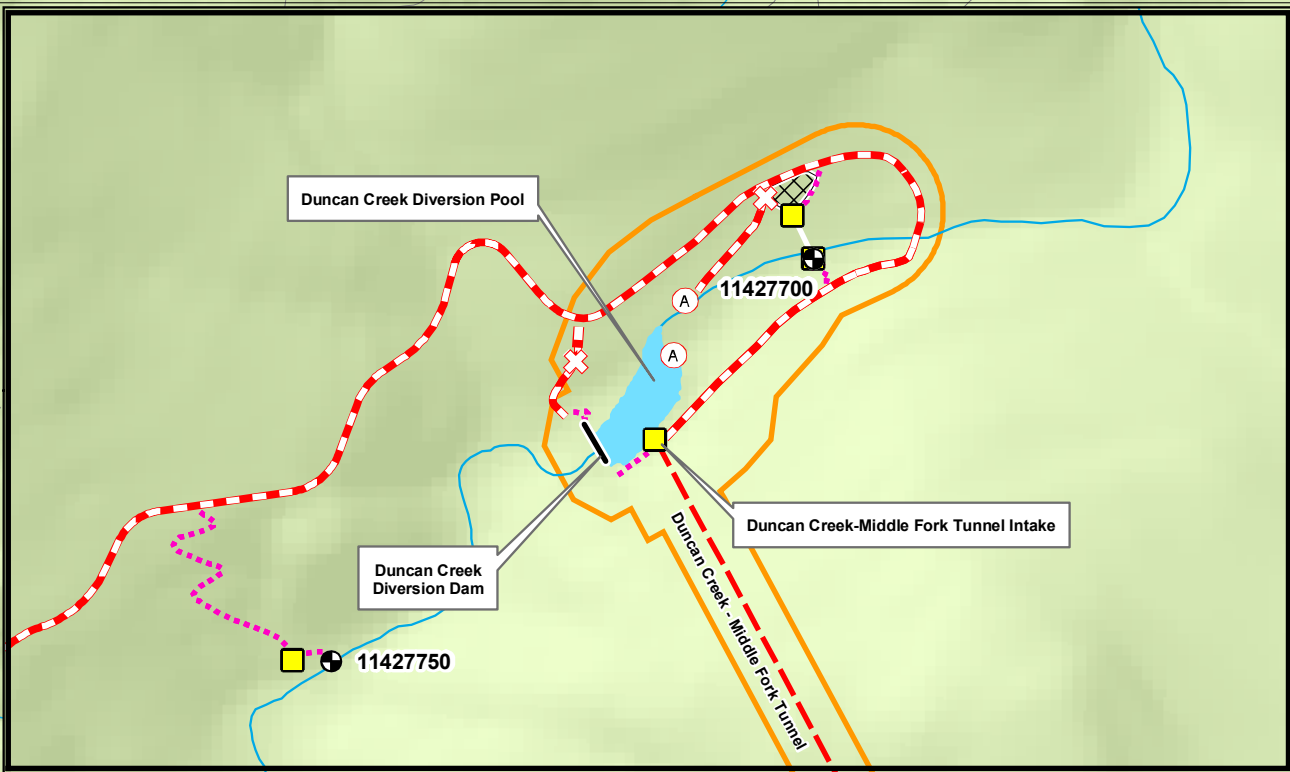
- 230 kV
- 60 kV


### Land Jurisdictions / Ownership\*

- Eldorado National Forest
- Tahoe National Forest
- PCWA
- Lone Star Timber
- Sierra Pacific Industries\*\*
- Other Private (Blank)

\*\* Includes former properties of R.H. Emmerson & Son, LLC


\* PARCEL DATA SOURCES:  
 Placer County, September 2009,  
 El Dorado County, September 2009,  
 USFS Region 5, October 2010.  
 Some data has been modified to account for known errors  
 and is to be used for general planning purposes only.



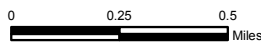


Placer County Water Agency  
 Middle Fork American River Project

Map 7.9-1a  
**Recreation Facilities and Land Ownership  
 in the French Meadows Reservoir and  
 Duncan Creek Diversion Areas**

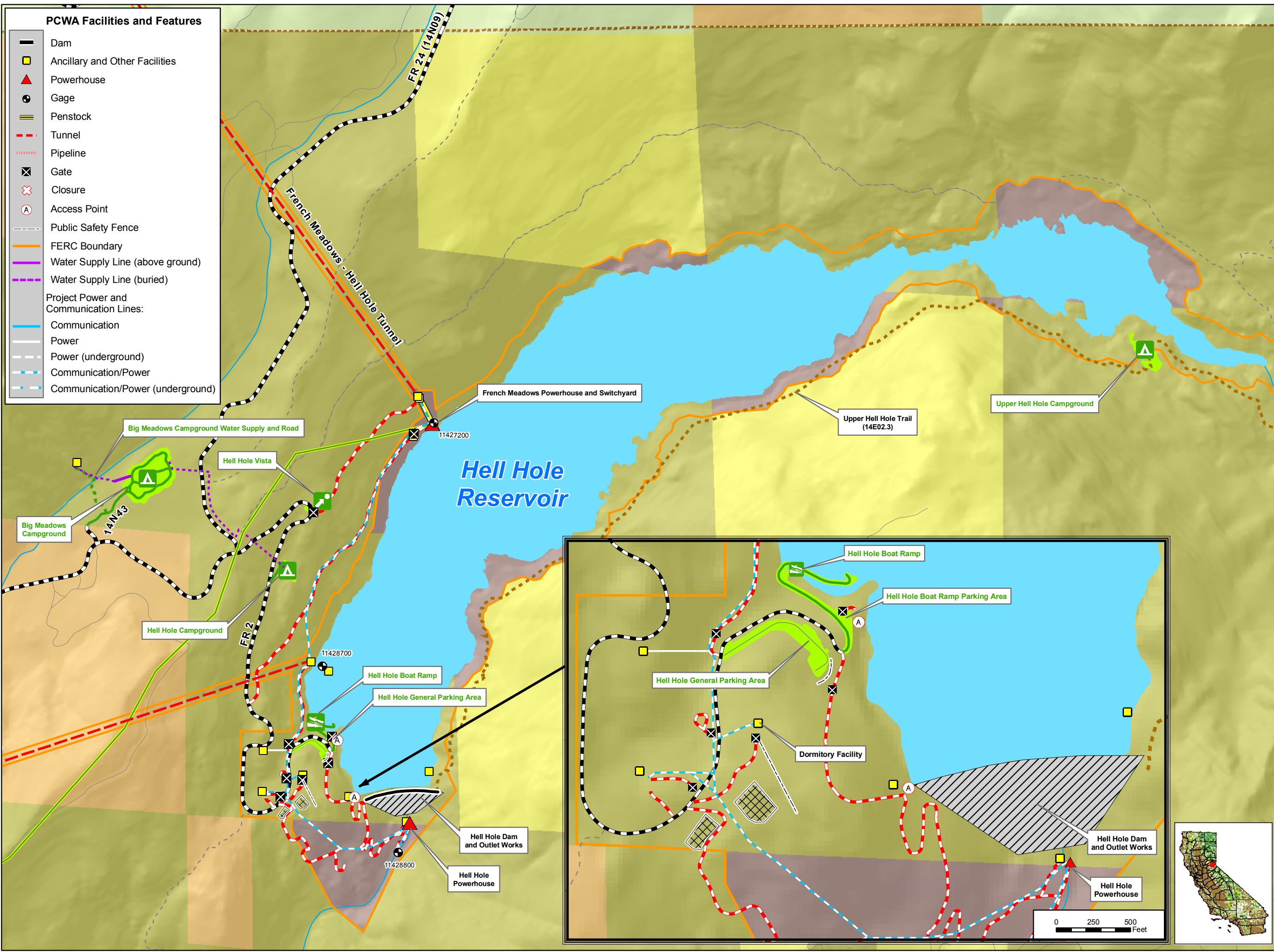


Date: 2/9/11



0 0.25 0.5 Miles

Projection: Ca. Stateplane, Zone 2  
 Datum: NAD 83



- PCWA Facilities and Features**
- Dam
  - Ancillary and Other Facilities
  - ▲ Powerhouse
  - Gage
  - Penstock
  - - - Tunnel
  - ⋯ Pipeline
  - ⊠ Gate
  - ⊗ Closure
  - ⊙ Access Point
  - - - Public Safety Fence
  - FERC Boundary
  - Water Supply Line (above ground)
  - - - Water Supply Line (buried)
  - Project Power and Communication Lines:
    - Communication
    - Power
    - - - Power (underground)
    - - - Communication/Power
    - - - Communication/Power (underground)

- Transportation**
- Non-Project General Access Road
  - Project Road
  - Project Trail
  - Recreation Access Road
  - Recreation Water Supply Facility Access Road or Trail
  - Recreation Access Trail
  - Other Road
- Project Recreation Facilities**
- ▲ Picnic Area
  - ▲ Boat Ramp
  - ▲ Scenic Viewpoint
  - ▲ Developed Campground
  - Recreation Facility Footprints
- Other Facilities**
- PG & E Transmission Lines:
- 230 kV
  - 60 kV
- Land Jurisdictions / Ownership\***
- Eldorado National Forest
  - Tahoe National Forest
  - PCWA
  - Lone Star Timber
  - Sierra Pacific Industries\*\*
  - Other Private (Blank)

\* PARCEL DATA SOURCES:  
 Placer County, September 2009,  
 El Dorado County, September 2009,  
 USFS Region 5, October 2010.  
 Some data has been modified to account for known errors  
 and is to be used for general planning purposes only.

**PCWA**  
 Placer County Water Agency  
 Middle Fork American River Project

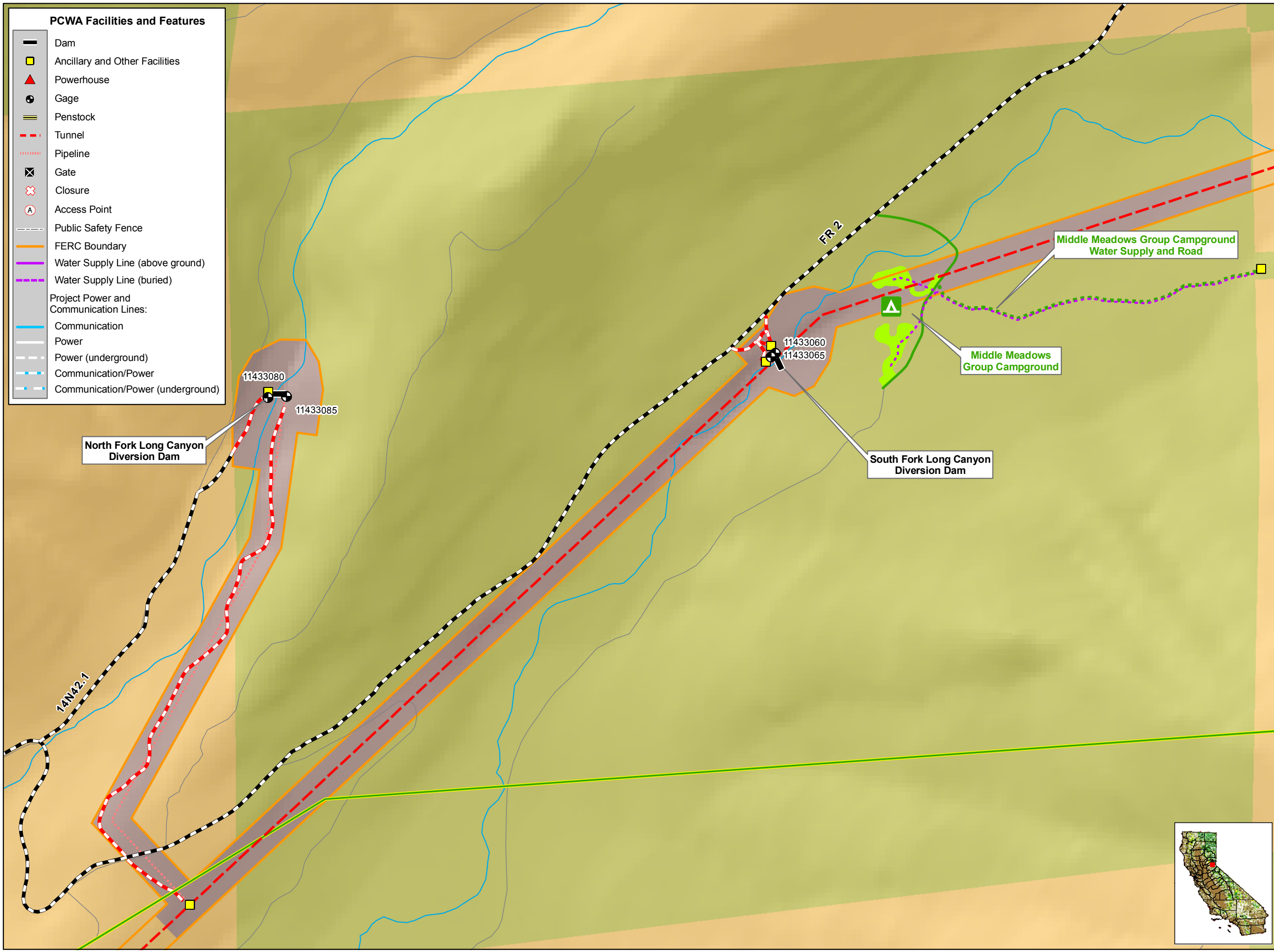
**Map 7.9-1b**  
**Recreation Facilities and Land Ownership  
 in the Hell Hole Reservoir Area**

0 250 500 Feet

0 500 1,000 2,000 Feet

Projection: Ca. Stateplane, Zone 2  
 Datum: NAD 83

Date: 2/9/11



- PCWA Facilities and Features**
- Dam
  - Ancillary and Other Facilities
  - ▲ Powerhouse
  - ⊕ Gage
  - ≡ Penstock
  - - - Tunnel
  - ⋯ Pipeline
  - ⊗ Gate
  - ⊗ Closure
  - Ⓐ Access Point
  - - - Public Safety Fence
  - FERC Boundary
  - Water Supply Line (above ground)
  - - - Water Supply Line (buried)
  - Project Power and Communication Lines:
  - Communication
  - Power
  - - - Power (underground)
  - - - Communication/Power
  - - - Communication/Power (underground)

- Transportation**
- Non-Project General Access Road
  - Project Road
  - Project Trail
  - Recreation Access Road
  - Recreation Water Supply Facility Access Road or Trail
  - Recreation Access Trail
  - Other Road
- Project Recreation Facilities**
- ▲ Picnic Area
  - ▲ Boat Ramp
  - ▲ Scenic Viewpoint
  - ▲ Developed Campground
  - Recreation Facility Footprints
- Other Facilities**
- PG & E Transmission Lines:
- 230 kV
  - 60 kV
- Land Jurisdictions / Ownership\***
- Eldorado National Forest
  - Tahoe National Forest
  - PCWA
  - Lone Star Timber
  - Sierra Pacific Industries\*\*
  - Other Private (Blank)
- \*\* Includes former properties of R.H. Emmerson & Son, LLC

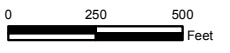
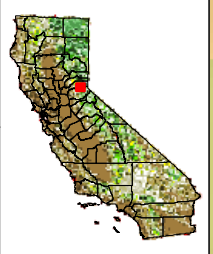
\* PARCEL DATA SOURCES:  
 Placer County, September 2009,  
 El Dorado County, September 2009,  
 USFS Region 5, October 2010.  
 Some data has been modified to account for known errors  
 and is to be used for general planning purposes only.



Placer County Water Agency  
 Middle Fork American River Project

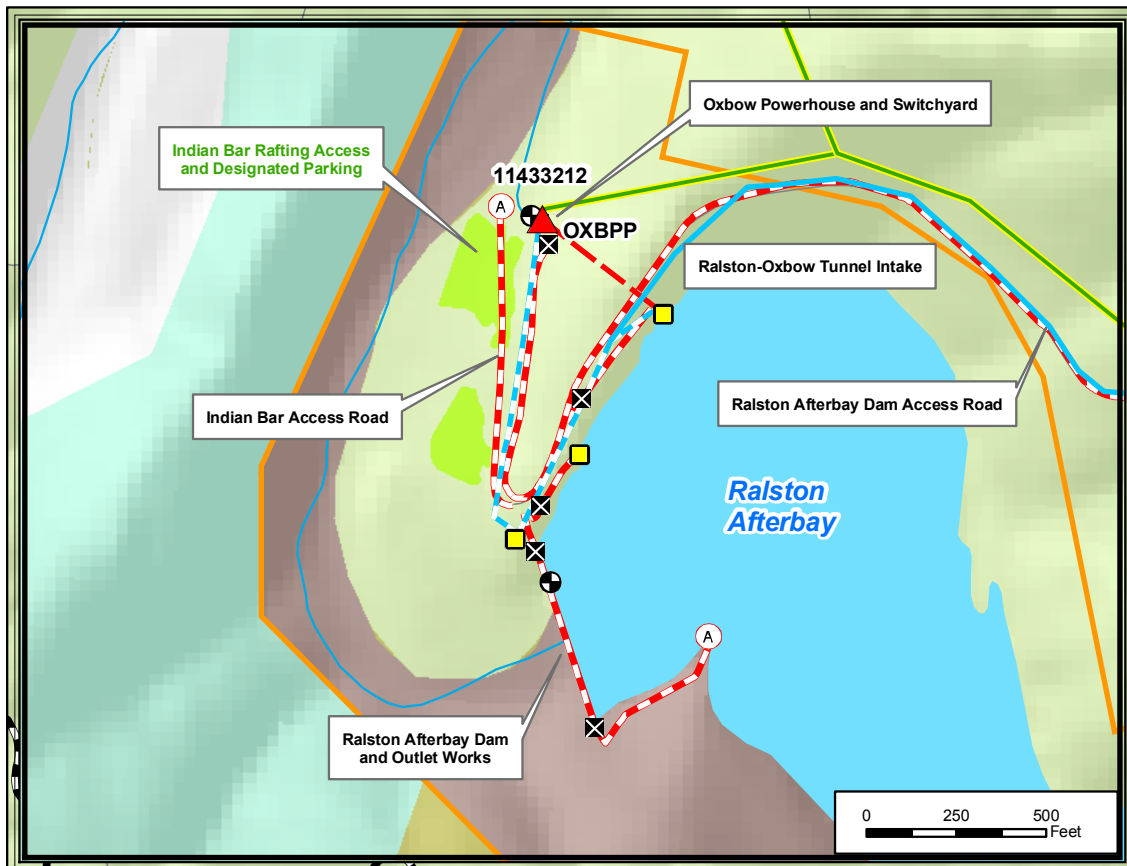
Map 7.9-1c

**Recreation Facilities and Land Ownership  
 in the Long Canyon Area**



Projection: Ca. Stateplane, Zone 2  
 Datum: NAD 83

Date: 2/9/11



### PCWA Facilities and Features

- Dam
- Ancillary and Other Facilities
- Powerhouse
- Gage
- Penstock
- Tunnel
- Pipeline
- Gate
- Closure
- Access Point
- Public Safety Fence
- FERC Boundary
- Water Supply Line (above ground)
- Water Supply Line (buried)
- Project Power and Communication Lines:**
- Communication
- Power
- Power (underground)
- Communication/Power
- Communication/Power (underground)

### Transportation

- Non-Project General Access Road
- Project Road
- Project Trail
- Recreation Access Road
- Recreation Water Supply Facility Access Road or Trail
- Recreation Access Trail
- Other Road

### Project Recreation Facilities

- Picnic Area
- Boat Ramp
- Scenic Viewpoint
- Developed Campground
- Recreation Facility Footprints

### Other Facilities

PG & E Transmission Lines:

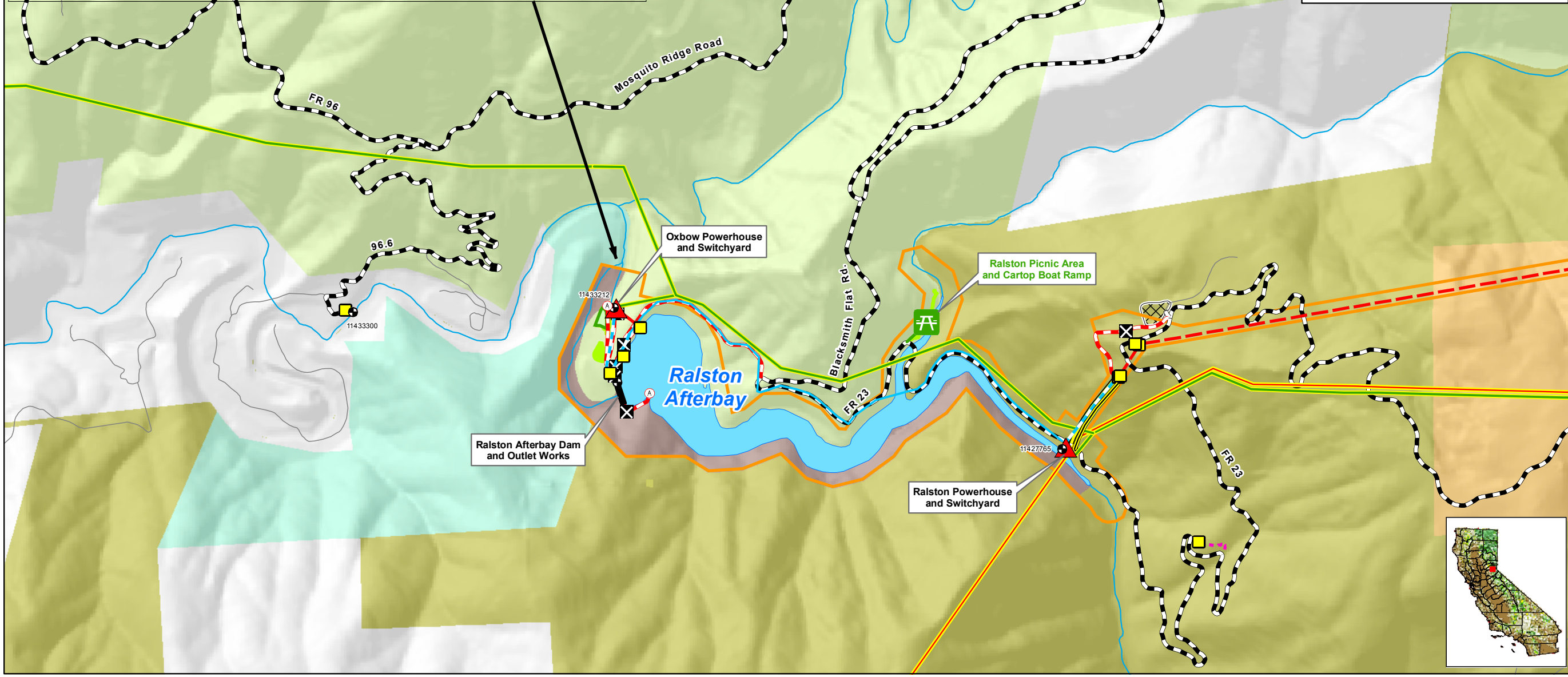
- 230 kV
- 60 kV

### Land Jurisdictions / Ownership\*

- Eldorado National Forest
- Tahoe National Forest
- Bureau of Land Management
- PCWA
- Lone Star Timber
- Sierra Pacific Industries\*\*
- Other Private (Blank)

\*\* Includes former properties of R.H. Emmerson & Son, LLC

\* PARCEL DATA SOURCES:  
 Placer County, September 2009,  
 El Dorado County, September 2009,  
 USFS Region 5, October 2010.  
 Some data has been modified to account for known errors  
 and is to be used for general planning purposes only.



Placer County Water Agency  
 Middle Fork American River Project

Map 7.9-1d  
**Recreation Facilities and Land Ownership  
 in the Ralston Afterbay Area**

Projection: Ca. Stateplane, Zone 2  
 Datum: NAD 83

Date: 2/9/11

**Transportation**

— Roads

**Hydrography**

— Watercourse  
Water Body

**Designated Boundary**

Wilderness Area  
Auburn State Recreation Area\*

\* State Park boundaries are approximate and should not be considered legal descriptions. Maps are intended for study purposes only.

**Non-Project Recreation Trails**

Pacific Crest Trail\*\*  
"Tevis Cup Ride" Course\*\*\*\* (Including Alternate Routes)  
Western States Trail\*\*\* (Including Alternate Routes)  
"Western States 100" Course\*\*\*\*  
OHV Trails\*\*  
Other Trails\*\*  
Major Trailheads\*\*  
Selected Reference Points  
Stream Crossing Locations

SOURCES:  
\*\* U.S.F.S. / U.S.G.S. / Auburn State Recreation Area  
\*\*\* U.S.F.S. / Hall, Hal. 2006. "The Western States Trail Guide"  
\*\*\*\* Western States Trail Foundation / Hall, Hal. 2006. "The Western States Trail Guide"

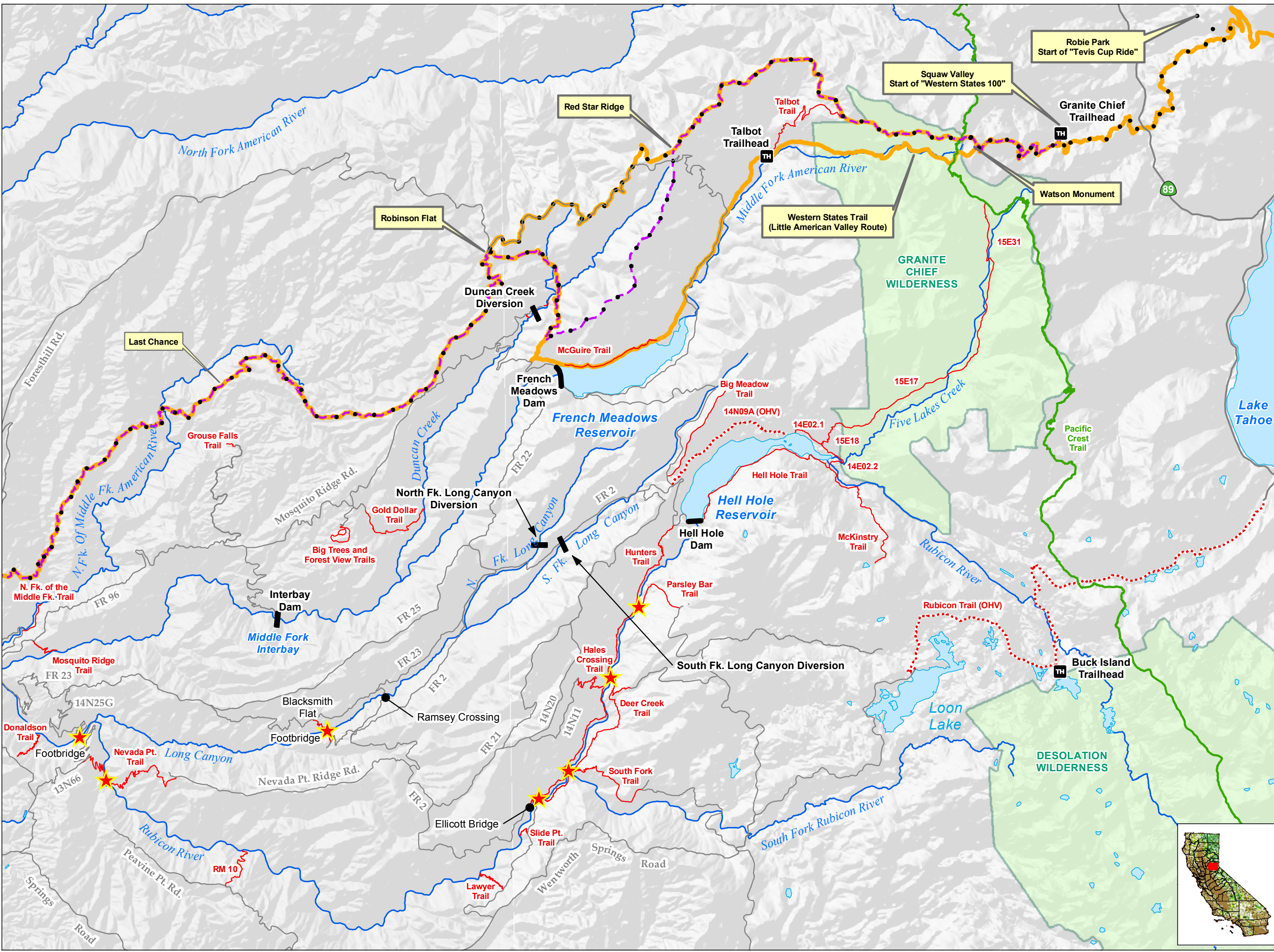
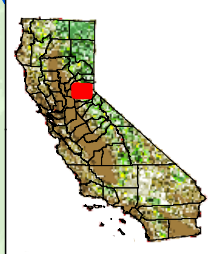


Placer County Water Agency  
Middle Fork American River Project

Map 7.9-2a

Popular Trails and Stream Crossing Locations  
in the Middle Fork American River Watershed

Scale: 0 0.5 1 2 Miles  
Projection: CA State Plane, Zone 2  
Datum: NAD 83  
Date: 2/14/11



**Transportation**

— Roads

**Hydrography**

— Watercourse

Water Body

**Designated Boundary**

Wilderness Area

Auburn State Recreation Area\*

\* State Park boundaries are approximate and should not be considered legal descriptions. Maps are intended for study purposes only.

**Non-Project Recreation Trails**

Pacific Crest Trail\*\*

"Tevis Cup Ride" Course\*\*\*\* (Including Alternate Routes)

Western States Trail\*\*\* (Including Alternate Routes)

"Western States 100" Course\*\*\*\*

OHV Trails\*\*

Other Trails\*\*

Major Trailheads\*\*

Selected Reference Points

Stream Crossing Locations

SOURCES:  
\*\* U.S.F.S. / U.S.G.S. / Auburn State Recreation Area

\*\*\* U.S.F.S. / Hall, Hal. 2006. "The Western States Trail Guide"

\*\*\*\* Western States Trail Foundation / Hall, Hal. 2006. "The Western States Trail Guide"



Placer County Water Agency  
Middle Fork American River Project

Map 7.9-2b

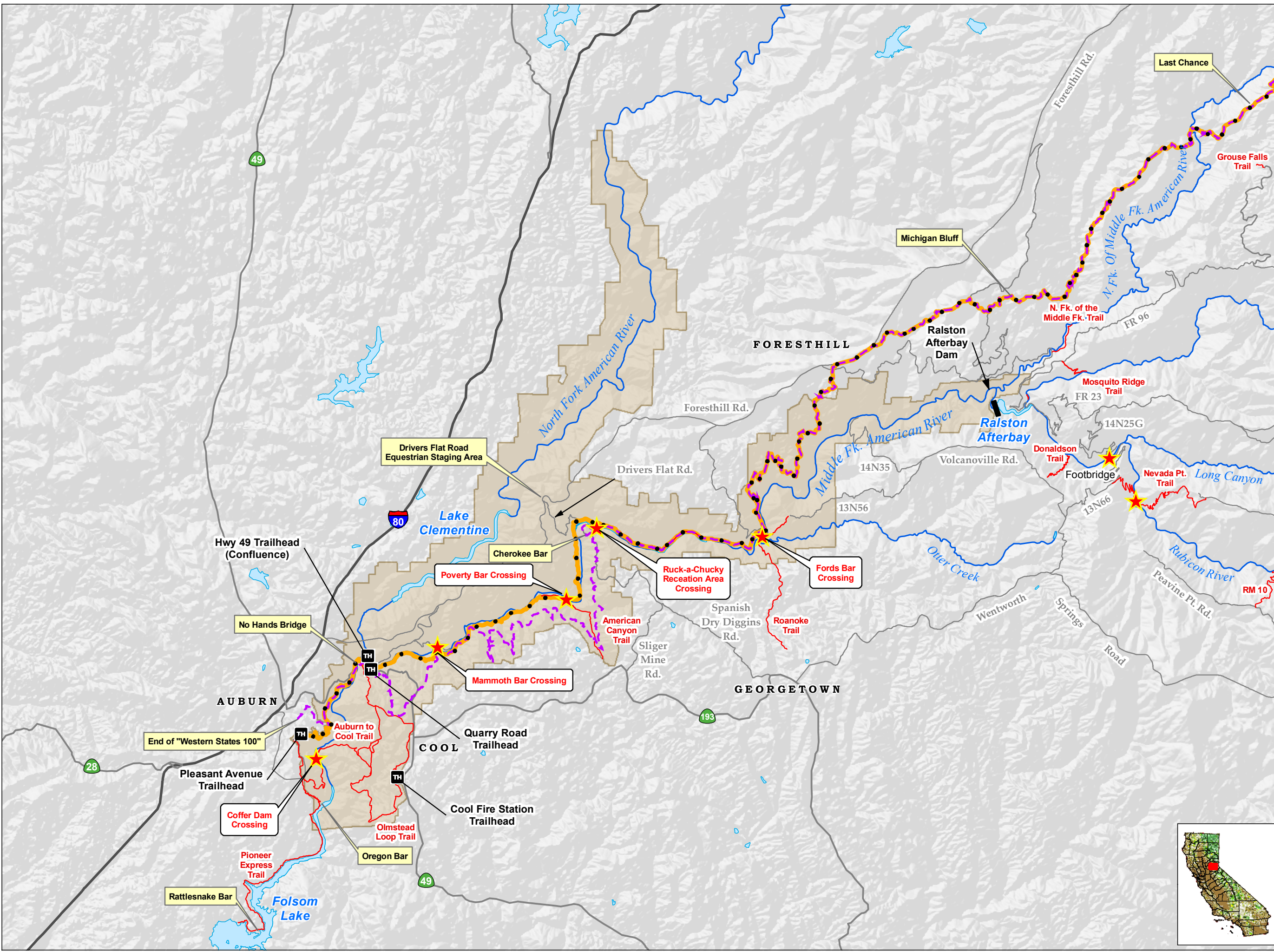
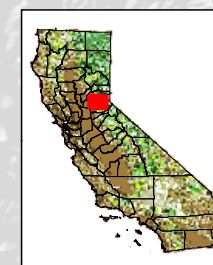
Popular Trails and Stream Crossing Locations  
in the Middle Fork American River Watershed

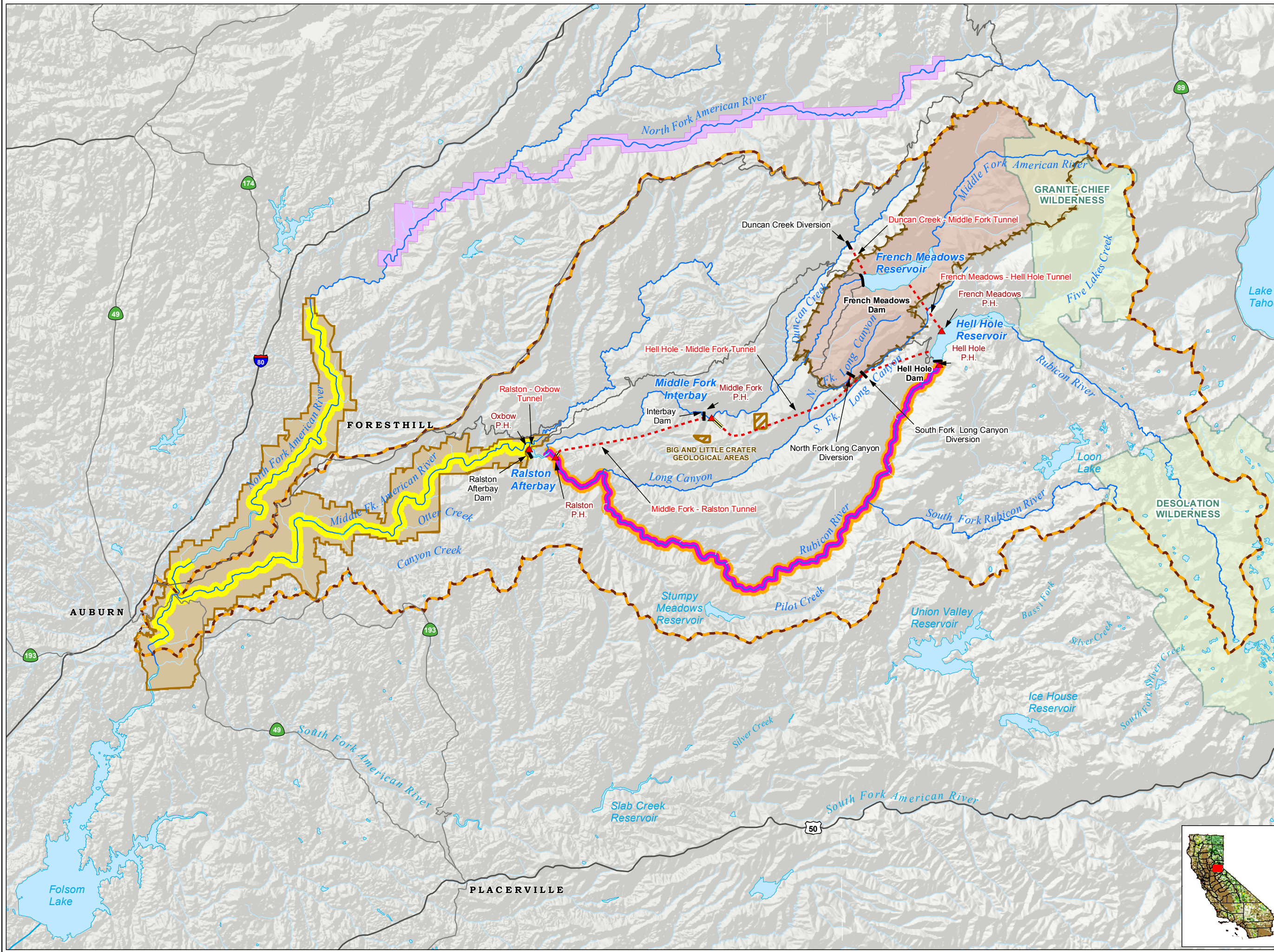


0 0.5 1 2 Miles


Projection: CA State Plane, Zone 2  
Datum: NAD 83

Date: 2/14/11






- Project Facilities**
- Powerhouse
  - Dam
  - Tunnel
  - Penstock
- Transportation**
- Roads
- Hydrography**
- Watercourse
  - Water Body
  - Middle Fork American River Watershed\*
- \*Modified from Calwater Ver. 2.2 to represent drainage above high-water mark of Folsom Lake
- Specially-Designated Areas**
- Wilderness Area
  - State Game Refuge
  - Auburn State Recreation Area\*\*
  - Special Area
  - Designated Wild Trout Stream (CDFG)
  - Areas Considered Eligible for Wild and Scenic Designation Under the WSR Act by the USBR
  - Areas recommended for inclusion in the WSR System by the USDA-FS
  - Designated in 1978 as "Wild" River Under Natl. Wild and Scenic River System. Also a component of the California Wild and Scenic River System.




Placer County Water Agency  
Middle Fork American River Project

**Map 7.9-3**

**Specially-Designated Areas in the Middle Fork American River Watershed**

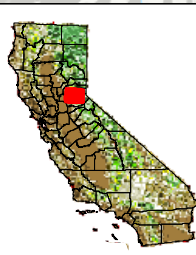


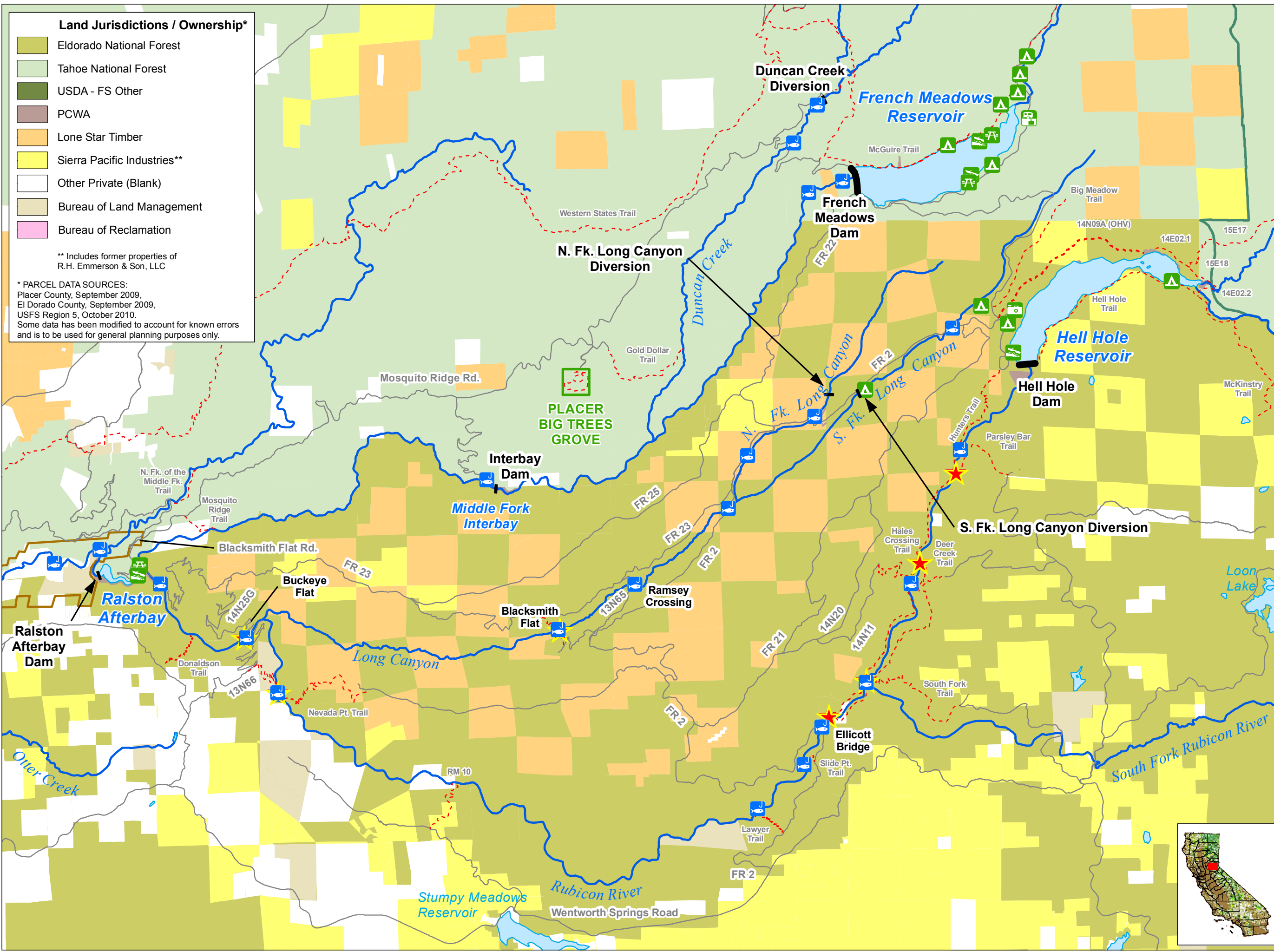
Date: 9/9/10



Miles

Projection: CA State Plane, Zone 2  
Datum: NAD 83





**Land Jurisdictions / Ownership\***

- Eldorado National Forest
- Tahoe National Forest
- USDA - FS Other
- PCWA
- Lone Star Timber
- Sierra Pacific Industries\*\*
- Other Private (Blank)
- Bureau of Land Management
- Bureau of Reclamation

\*\* Includes former properties of R.H. Emmerson & Son, LLC

\* PARCEL DATA SOURCES:  
 Placer County, September 2009,  
 El Dorado County, September 2009,  
 USFS Region 5, October 2010.  
 Some data has been modified to account for known errors and is to be used for general planning purposes only.

**Project Facilities**

- Dam or Diversion

**Project Recreation Facilities**

- Boat Ramp
- Developed Campground
- Picnic Area
- Scenic Viewpoint
- Trailer Sanitary Station

**Transportation**

- Roads
- Trails

**Hydrography**

- Watercourse
- Water Body

**Designated Boundary**

- Wilderness Area
- Auburn State Recreation Area\*

\* State Park boundaries are approximate and should not be considered legal descriptions. Maps are intended for study purposes only.

**Angling Resources**

- Popular Fishing Area or Access Point\*\*
- Stream Crossing Locations

\*\* Established by Focus Group and Follow-up Consultation

**PCWA**

Placer County Water Agency  
Middle Fork American River Project

Map 7.9-4  
**Popular Fishing Areas and Access Points in the Bypass Reaches**

Date: 2/14/11

Projection: CA State Plane, Zone 2  
Datum: NAD 83

**Land Jurisdictions / Ownership\***

- Eldorado National Forest
- Tahoe National Forest
- USDA - FS Other
- PCWA
- Lone Star Timber
- Sierra Pacific Industries\*\*
- Other Private (Blank)
- Bureau of Land Management
- Bureau of Reclamation

\*\* Includes former properties of R.H. Emmerson & Son, LLC

\* PARCEL DATA SOURCES:  
 Placer County, September 2009,  
 El Dorado County, September 2009,  
 USFS Region 5, October 2010.  
 Some data has been modified to account for known errors and is to be used for general planning purposes only.

**Project Facilities**

- Dam or Diversion

**Project Recreation Facilities**

- Boat Ramp
- Developed Campground
- Picnic Area
- Scenic Viewpoint
- Trailer Sanitary Station

**Transportation**

- Roads
- Trails

**Hydrography**

- Watercourse
- Water Body

**Designated Boundary**

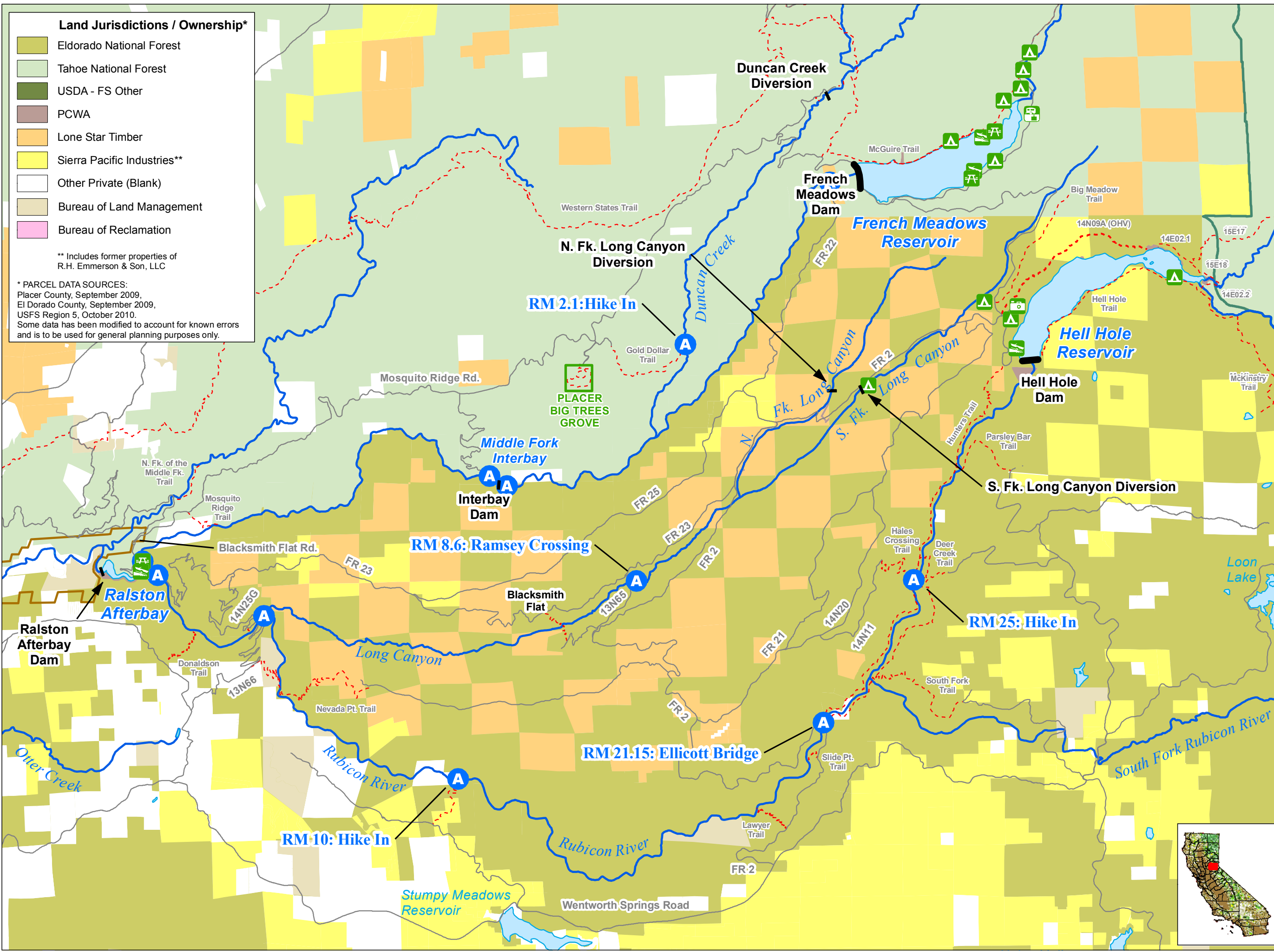
- Wilderness Area
- Auburn State Recreation Area\*

\* State Park boundaries are approximate and should not be considered legal descriptions. Maps are intended for study purposes only.

**Whitewater Boating Resources**

- Access Point\*\*

\*\* Established by Focus Group and Through Follow-up Consultation



**PCWA**  
 Placer County Water Agency  
 Middle Fork American River Project

**Map 7.9-5**  
**Whitewater Boating Access Points on the Bypass Reaches**

0 0.5 1 2 Miles  
 Projection: CA State Plane, Zone 2  
 Datum: NAD 83  
 Date: 2/14/11

**Project-Related Facilities**

- ▲ Powerhouse
- Dam
- - - Tunnel
- Penstock

**Hydrography**

- Watercourse
- Water Body
- River Mile Marker

**Transportation**

- Major Highway
- Minor Road
- River Access Road
- - - River Access Trail
- Western States Trail\*
- ⊠ Locked Gate

\* U.S.F.S. / Hall, Hal. 2006.  
\*The Western States Trail Guide\*

**Designated Boundary**

- Auburn State Recreation Area\*\*

\*\*Disclaimer: State Park Boundaries are approximate and should not be considered legal descriptions. Maps are intended for study purposes only.

**Whitewater Recreation Resources**

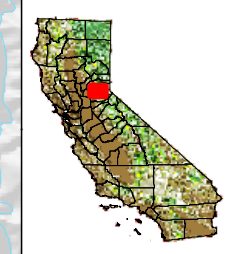
- ▲ Put-In/Take-Out
- ▲ Put-In (Only)
- ▲ Take-Out (Only)
- ▲ Developed Campground
- ▲ Primitive Camping



Placer County Water Agency  
Middle Fork American River Project

Map 7.9-6

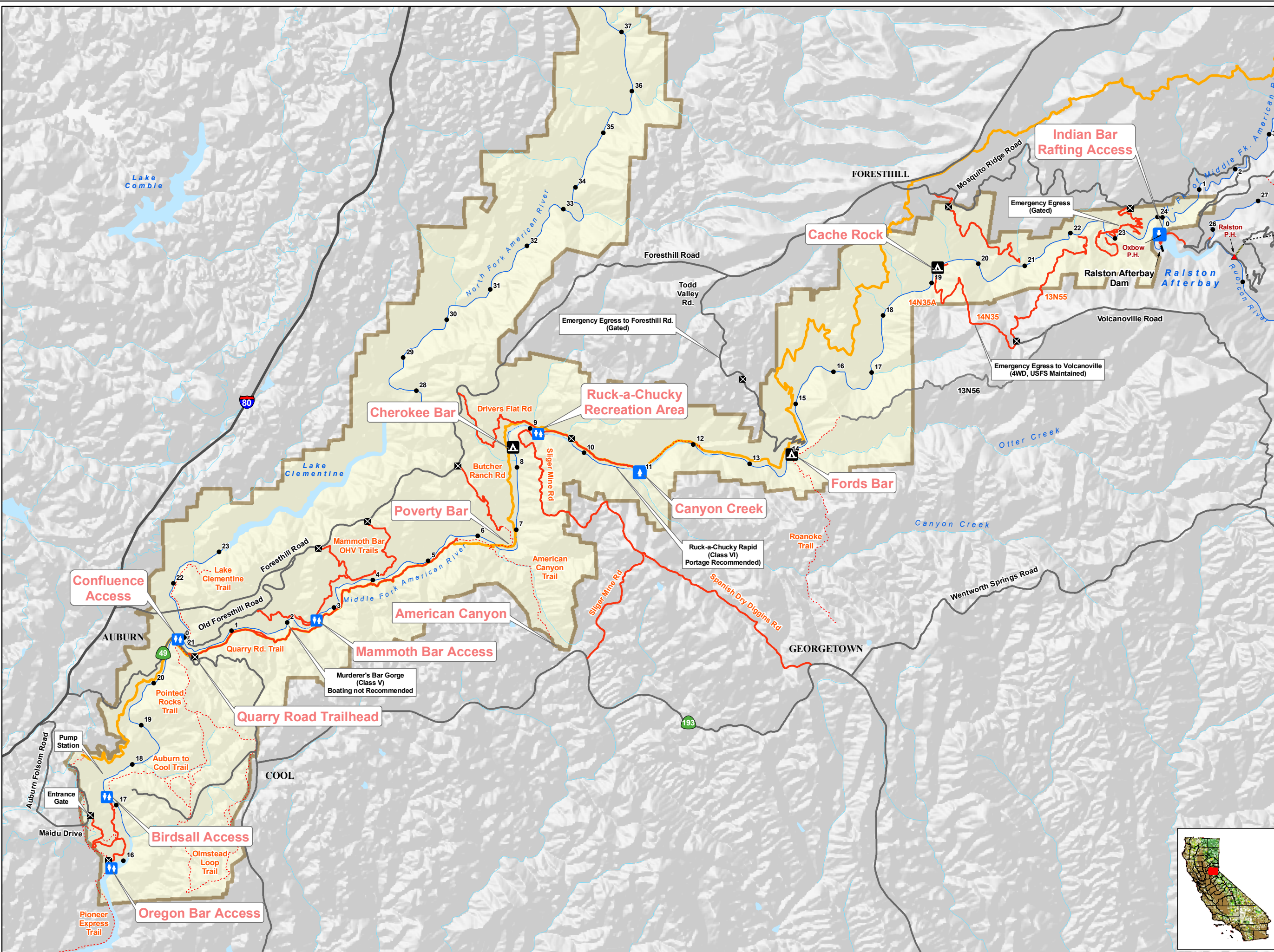
**Recreation Areas, Roads and Trails in the Auburn State Recreation Area**



0 0.25 0.5 1 1.5 2 Miles

Projection: Ca. Stateplane, Zone 2  
Datum: NAD 83

Date: 2/14/11



### Land Jurisdictions / Ownership\*

- Eldorado National Forest
- Tahoe National Forest
- USDA - FS Other
- PCWA
- Lone Star Timber
- Sierra Pacific Industries\*\*
- Other Private (Blank)
- Bureau of Land Management
- Bureau of Reclamation

\*\* Includes former properties of R.H. Emmerson & Son, LLC

\* PARCEL DATA SOURCES:  
 Placer County, September 2009,  
 El Dorado County, September 2009,  
 USFS Region 5, October 2010.  
 Some data has been modified to account for known errors and is to be used for general planning purposes only.

### Project Facilities

- Dam or Diversion

### Project Recreation Facilities

- Boat Ramp
- Developed Campground
- Picnic Area
- Scenic Viewpoint

### Transportation

- Roads
- Trails

### Hydrography

- Watercourse
- Water Body

### Designated Boundary

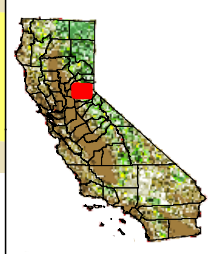
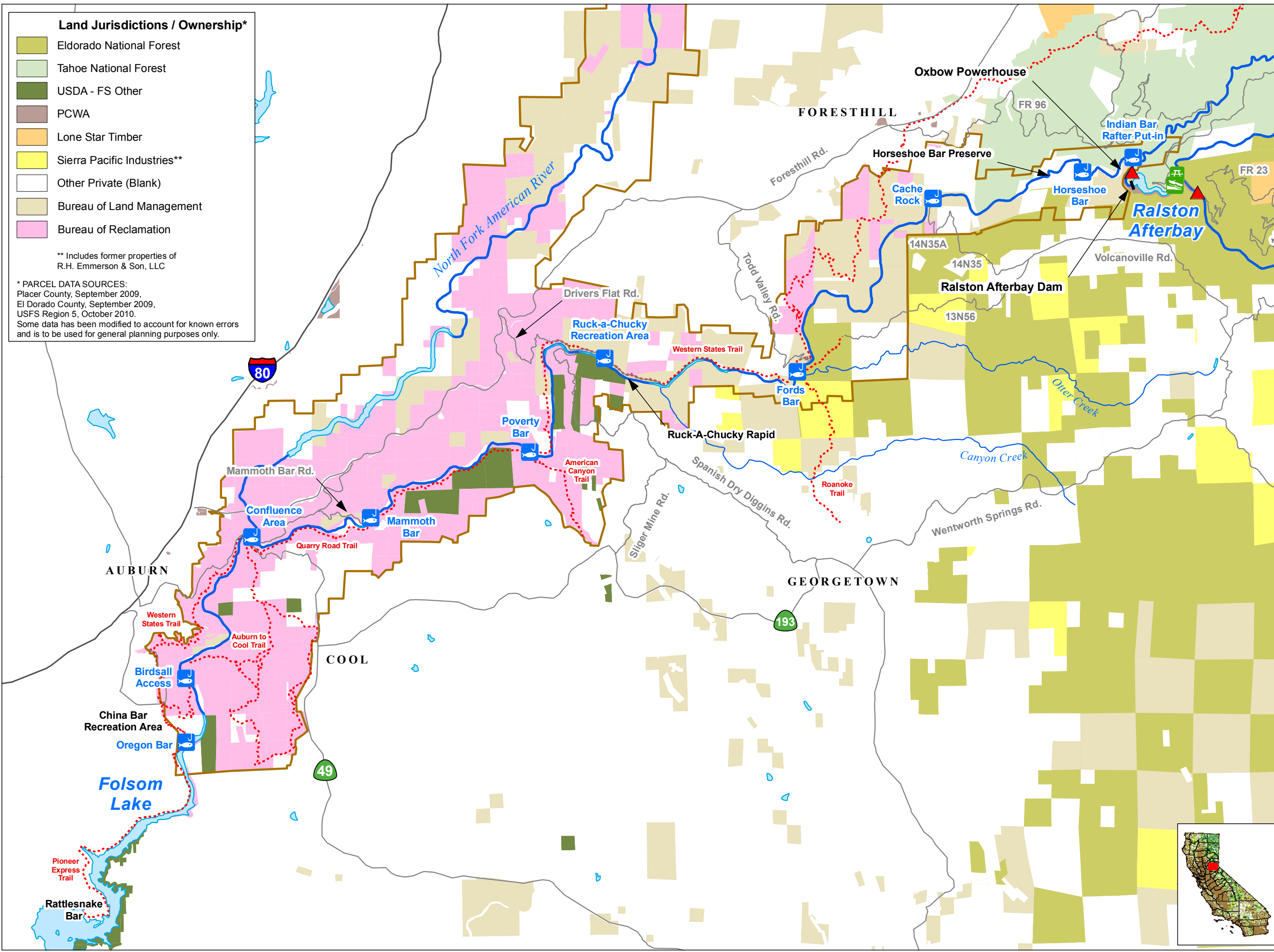
- Auburn State Recreation Area\*

\* State Park boundaries are approximate and should not be considered legal descriptions. Maps are intended for study purposes only.

### Angling Resources

- Popular Fishing Area or Access Point\*\*

\*\* Established by Focus Group and Follow-up Consultation



Placer County Water Agency  
 Middle Fork American River Project

Map 7.9-7  
**Popular Fishing Areas and Access Points in the Peaking Reach**

0 0.5 1 2 Miles  
 Projection: CA State Plane, Zone 2  
 Datum: NAD 83  
 Date: 2/2/11

**Land Jurisdictions / Ownership\***

- Eldorado National Forest
- Tahoe National Forest
- USDA - FS Other
- PCWA
- Lone Star Timber
- Sierra Pacific Industries\*\*
- Other Private (Blank)
- Bureau of Land Management
- Bureau of Reclamation

\*\* Includes former properties of R.H. Emmerson & Son, LLC

\* PARCEL DATA SOURCES:  
 Placer County, September 2009,  
 El Dorado County, September 2009,  
 USFS Region 5, October 2010.  
 Some data has been modified to account for known errors and is to be used for general planning purposes only.

**Transportation**

- Major Road
- Minor Road

**Hydrography**

- Watercourse
- Water Body

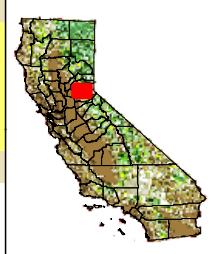
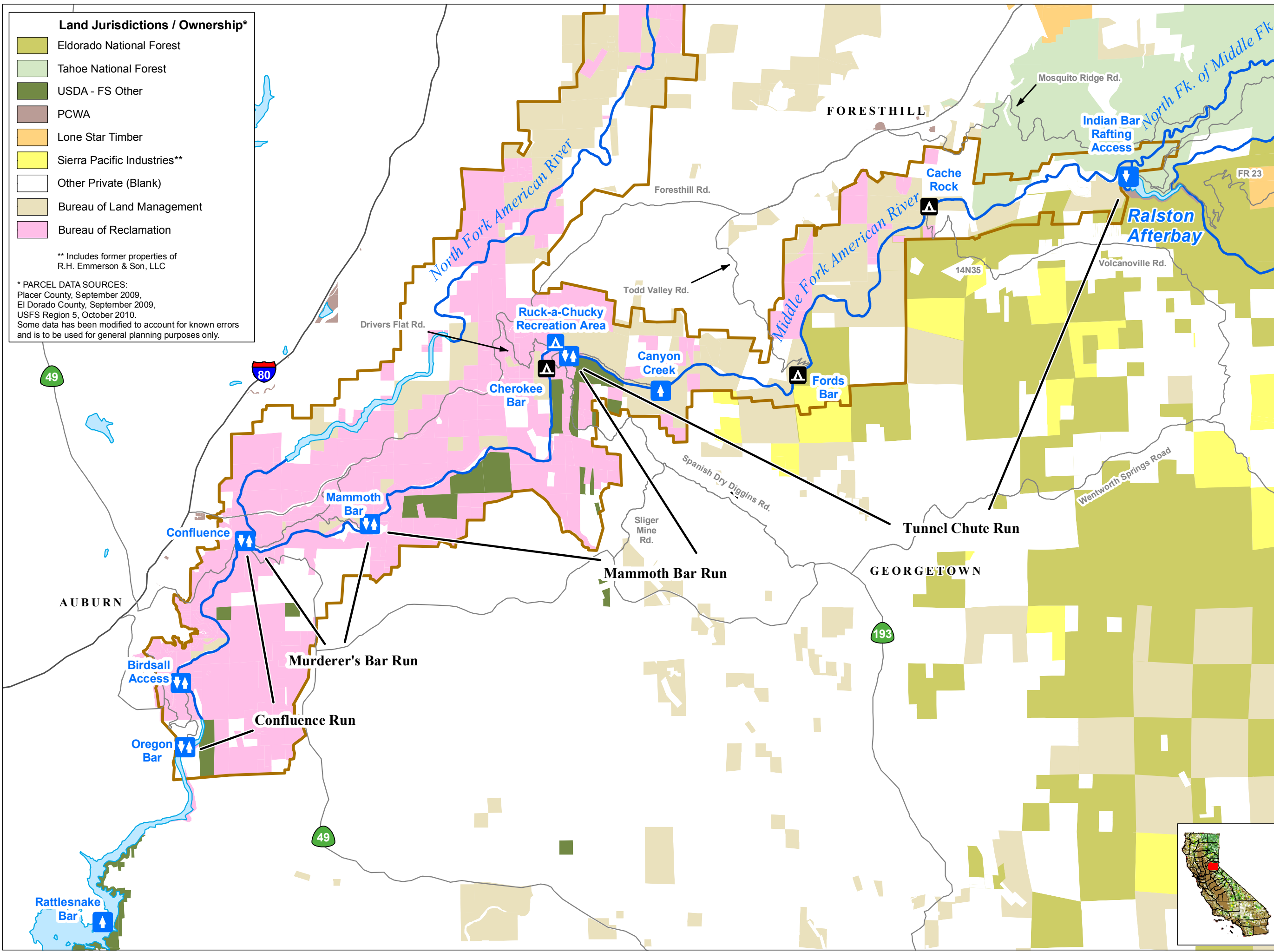
**Designated Boundary**

- Auburn State Recreation Area\*

\* State Park boundaries are approximate and should not be considered legal descriptions. Maps are intended for study purposes only.

**Whitewater Recreation Resources**

- Put-In/Take-Out
- Put-In (Only)
- Take-Out (Only)
- Developed Campground
- Primitive Camping



**PCWA**  
 Placer County Water Agency  
 Middle Fork American River Project

Map 7.9-8  
**Whitewater Boating Runs in the Peaking Reach**

0 0.5 1 2 Miles  
 Projection: CA State Plane, Zone 2  
 Datum: NAD 83  
 Date: 2/2/11