

Project Facilities

- Powerhouse
- Dam
- Tunnel
- Penstock

Project Recreation Facilities

- Boat Ramp
- Developed Campground
- Picnic Area
- Scenic Viewpoint
- Scenic Viewpoint

Transportation

- Non-Project General Access Road
- Other Roads

Hydrography

- Watercourse
- Water Body

USDA-FS: Administrative Boundary

- Tahoe National Forest
- Eldorado National Forest

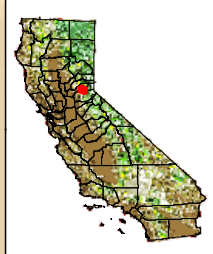


Placer County Water Agency
Middle Fork American River Project

Map 7.11-1

**Roads in the Vicinity of the MFP
Designated as USDA-FS Managed Viewsheds**

Projection: CA State Plane, Zone 2
Datum: NAD 83
Date: 2/3/11



Visual Quality Objectives

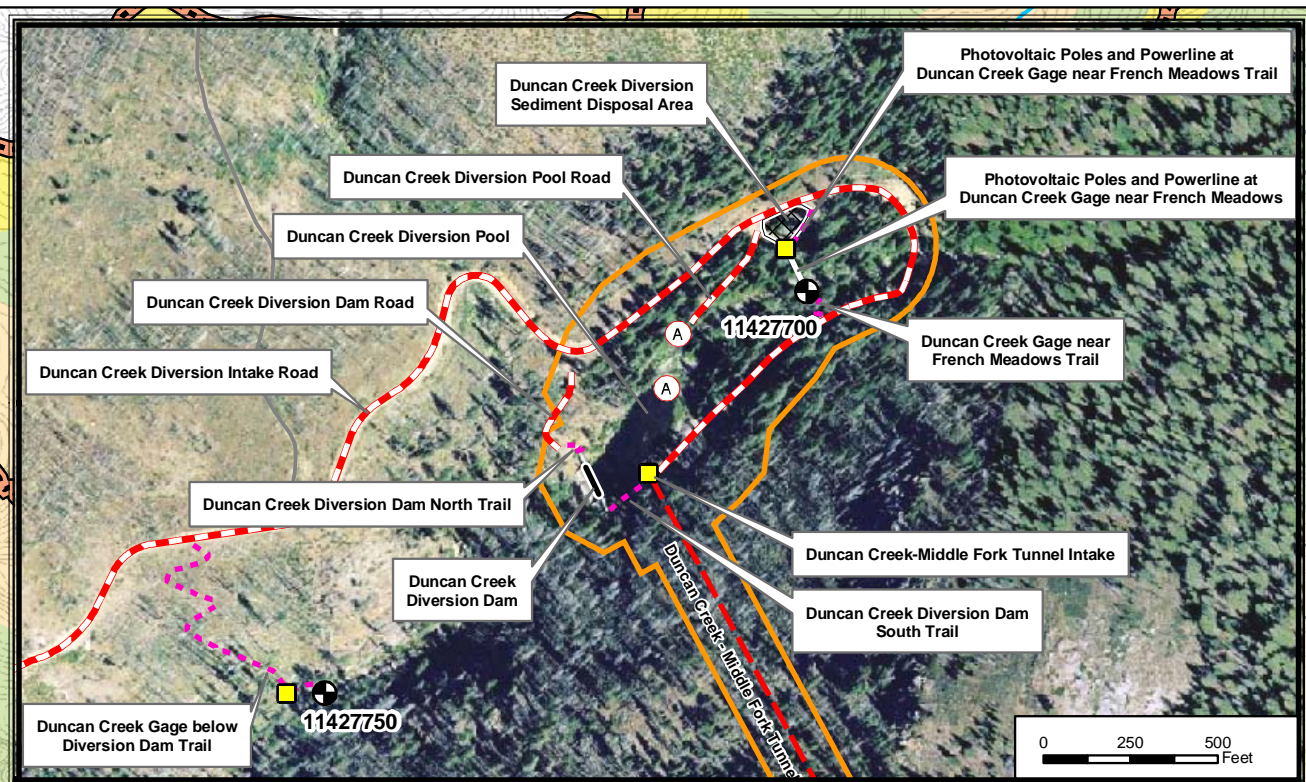
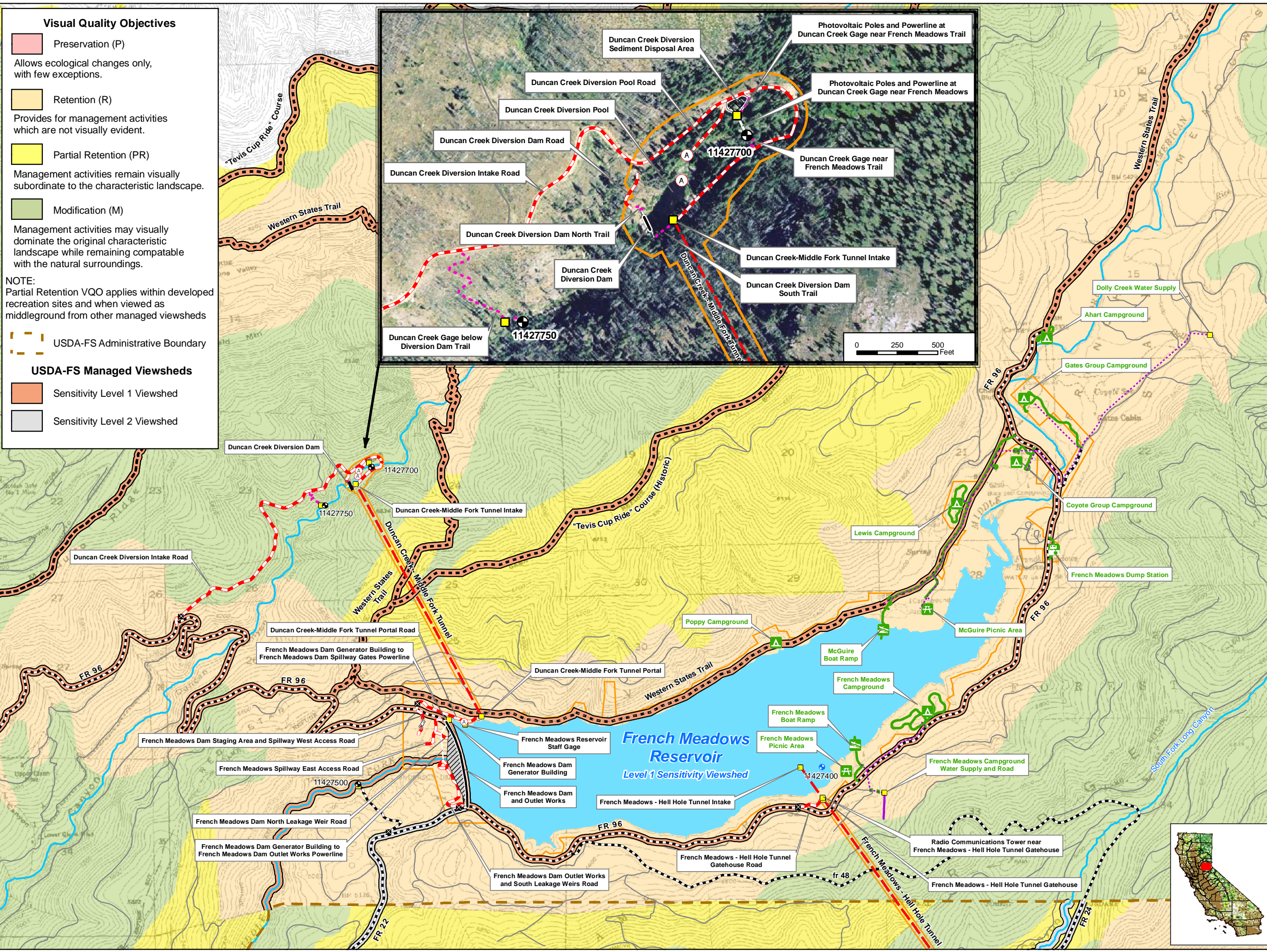
- Preservation (P)**
Allows ecological changes only, with few exceptions.
- Retention (R)**
Provides for management activities which are not visually evident.
- Partial Retention (PR)**
Management activities remain visually subordinate to the characteristic landscape.
- Modification (M)**
Management activities may visually dominate the original characteristic landscape while remaining compatible with the natural surroundings.

NOTE:
Partial Retention VQO applies within developed recreation sites and when viewed as midground from other managed viewsheds

USDA-FS Administrative Boundary

USDA-FS Managed Viewsheds

- Sensitivity Level 1 Viewshed
- Sensitivity Level 2 Viewshed



PCWA Facilities and Features

- Dam
- Ancillary and Other Facilities
- Powerhouse
- Gage
- Reservoir Gage
- Penstock
- Tunnel
- Pipeline
- Gate
- Access Point
- FERC Boundary

Project Power and Communication Lines:

- Communication
- Power
- Power (underground)
- Communication/Power
- Communication/Power (underground)

Transportation

- Non-Project General Access Road
- Project Road
- Project Trail
- Recreation Access Road
- Recreation Facility Water Supply Access Road or Trail
- Other Road

Project Recreation Facilities

- Picnic Area
- Boat Ramp
- Scenic Viewpoint
- Developed Campground
- Trailer Sanitary Station
- Water Supply Line (Above ground)
- Water Supply Line (Buried)

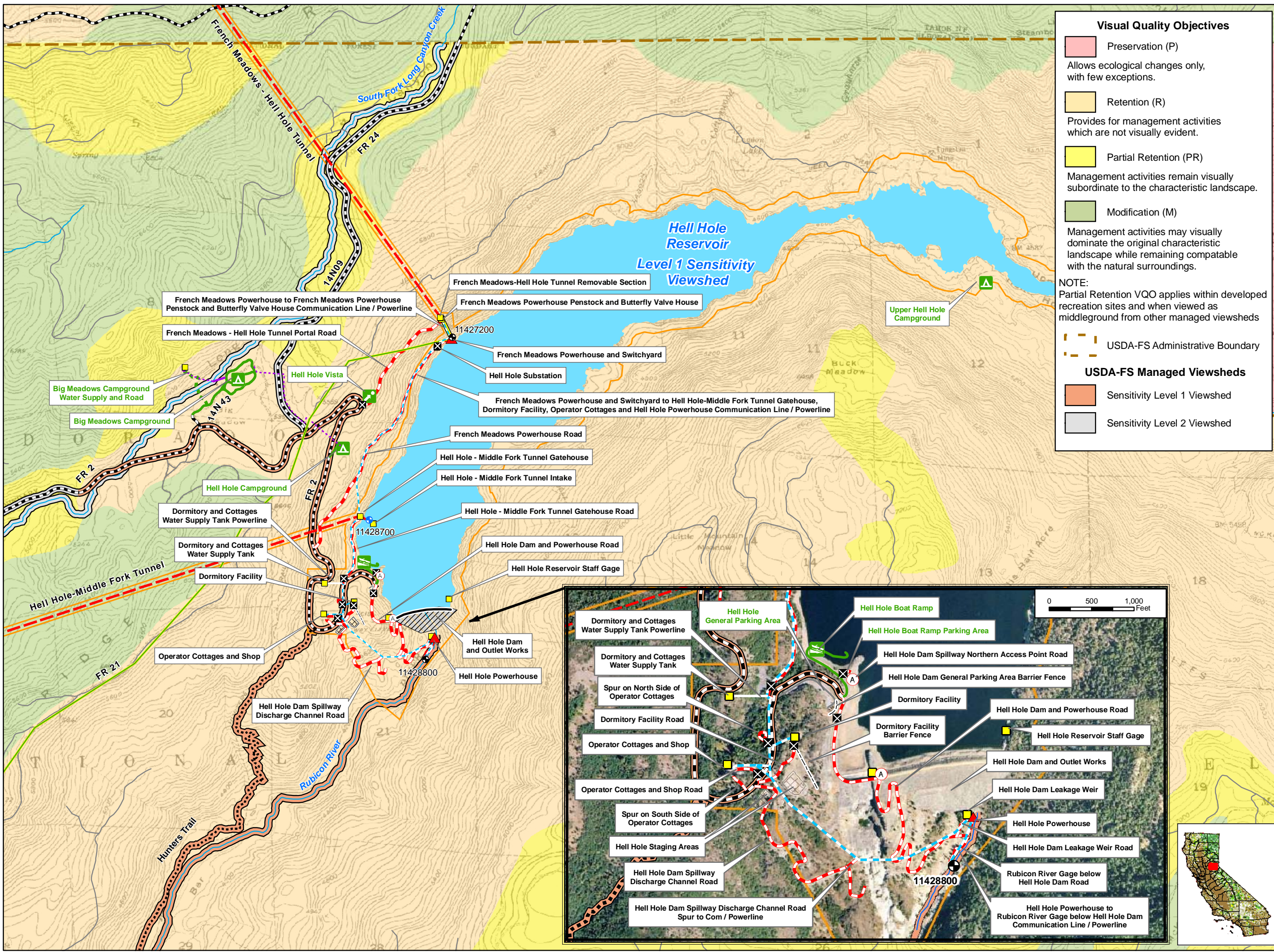
Other Facilities

PG & E Transmission Lines:

- 230 kV
- 60 kV

Placer County Water Agency
Middle Fork American River Project
Map 7.11-2a
Forest Plan Visual Quality Objectives and USDA-FS Managed Viewsheds in the Vicinity of the MFP
Duncan Creek, French Meadows Reservoir Area

0 0.25 0.5 Miles
Projection: Ca. Stateplane, Zone 2
Datum: NAD 83
Date: 2/3/11



Visual Quality Objectives

- Preservation (P)**
Allows ecological changes only, with few exceptions.
- Retention (R)**
Provides for management activities which are not visually evident.
- Partial Retention (PR)**
Management activities remain visually subordinate to the characteristic landscape.
- Modification (M)**
Management activities may visually dominate the original characteristic landscape while remaining compatible with the natural surroundings.

NOTE:
Partial Retention VQO applies within developed recreation sites and when viewed as midground from other managed viewsheds

USDA-FS Managed Viewsheds

- Sensitivity Level 1 Viewshed
- Sensitivity Level 2 Viewshed

PCWA Facilities and Features

- Dam
- Ancillary and Other Facilities
- Powerhouse
- Gage
- Reservoir Gage
- Penstock
- Tunnel
- Pipeline
- Gate
- Access Point
- FERC Boundary

Project Power and Communication Lines:

- Communication
- Power
- Power (underground)
- Communication/Power
- Communication/Power (underground)

Transportation

- Non-Project General Access Road
- Project Road
- Project Trail
- Recreation Access Road
- Recreation Facility Water Supply Access Road or Trail
- Other Road

Project Recreation Facilities

- Picnic Area
- Boat Ramp
- Scenic Viewpoint
- Developed Campground
- Trailer Sanitary Station
- Water Supply Line (Above ground)
- Water Supply Line (Buried)

Other Facilities

PG & E Transmission Lines:

- 230 kV
- 60 kV

PCWA
Placer County Water Agency
Middle Fork American River Project
Map 7.11-2b
Forest Plan Visual Quality Objectives and USDA-FS Managed Viewsheds in the Vicinity of the MFP
Hell Hole Reservoir Area

0 0.25 0.5 Miles
Projection: Ca. Stateplane, Zone 2
Datum: NAD 83
Date: 2/2/11

Visual Quality Objectives

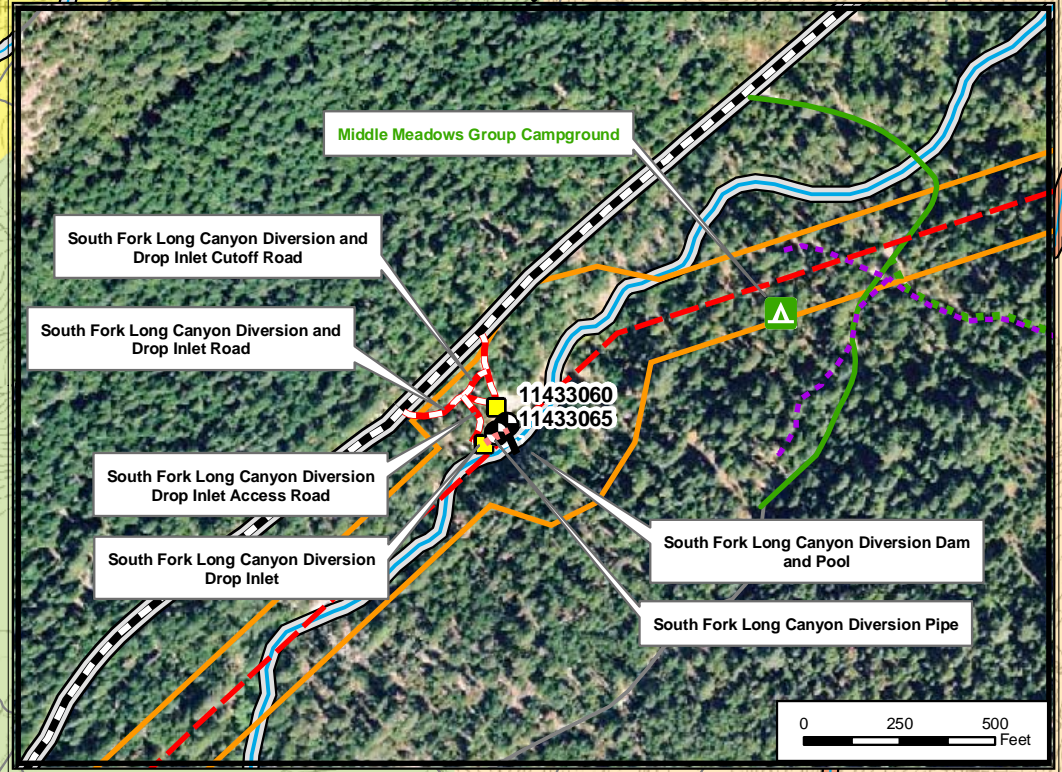
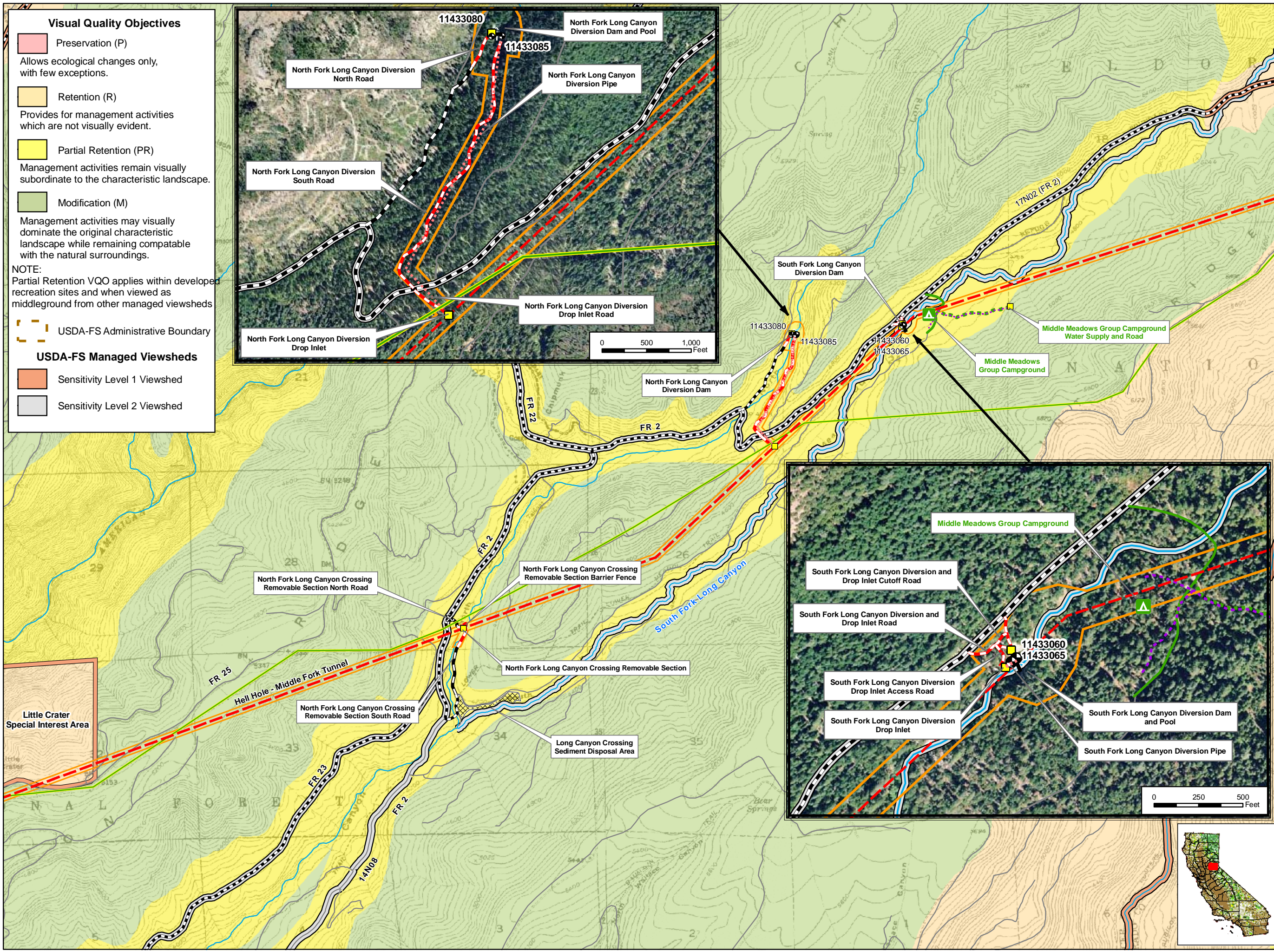
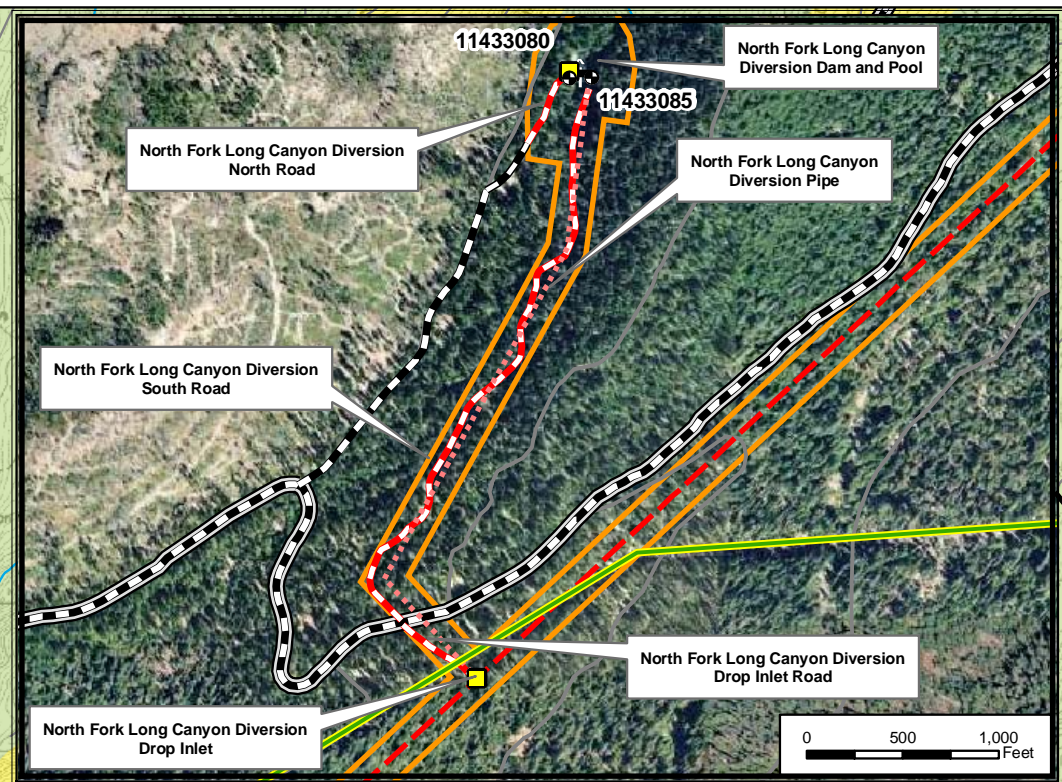
- Preservation (P)**
Allows ecological changes only, with few exceptions.
- Retention (R)**
Provides for management activities which are not visually evident.
- Partial Retention (PR)**
Management activities remain visually subordinate to the characteristic landscape.
- Modification (M)**
Management activities may visually dominate the original characteristic landscape while remaining compatible with the natural surroundings.

NOTE:
Partial Retention VQO applies within developed recreation sites and when viewed as midground from other managed viewsheds

USDA-FS Administrative Boundary

USDA-FS Managed Viewsheds

- Sensitivity Level 1 Viewshed
- Sensitivity Level 2 Viewshed



PCWA Facilities and Features

- Dam
- Ancillary and Other Facilities
- Powerhouse
- Gage
- Reservoir Gage
- Penstock
- Tunnel
- Pipeline
- Gate
- Access Point
- FERC Boundary

Project Power and Communication Lines:

- Communication
- Power
- Power (underground)
- Communication/Power
- Communication/Power (underground)

Transportation

- Non-Project General Access Road
- Project Road
- Project Trail
- Recreation Access Road
- Recreation Facility Water Supply Access Road or Trail
- Other Road


Project Recreation Facilities

- Picnic Area
- Boat Ramp
- Scenic Viewpoint
- Developed Campground
- Trailer Sanitary Station
- Water Supply Line (Above ground)
- Water Supply Line (Buried)

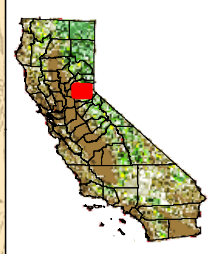
Other Facilities

PG & E Transmission Lines:

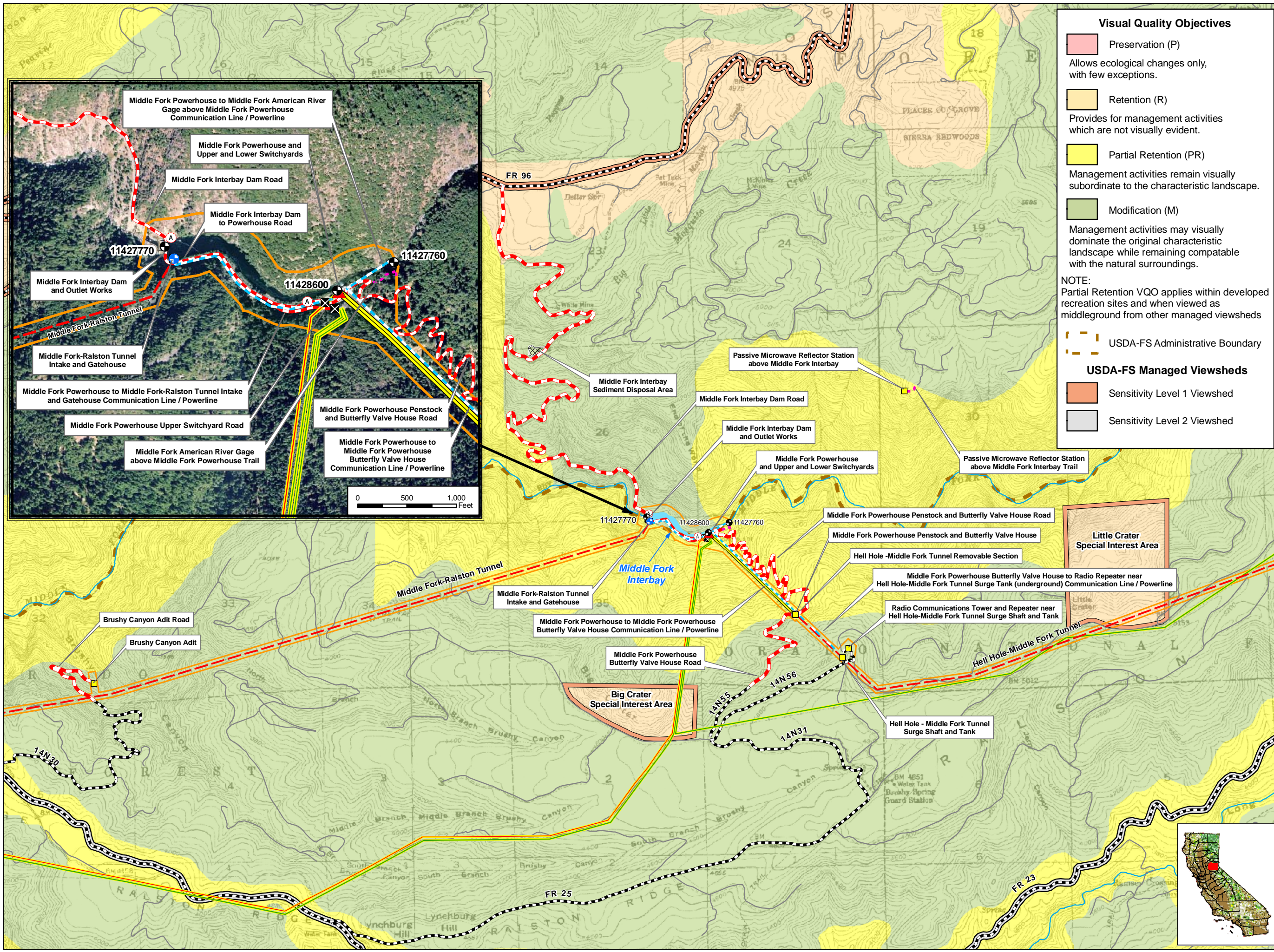
- 230 kV
- 60 kV



Placer County Water Agency
Middle Fork American River Project
Map 7.11-2c
Forest Plan Visual Quality Objectives and USDA-FS Managed Viewsheds in the Vicinity of the MFP
Long Canyon Creek Area



0 0.25 0.5 Miles
Projection: Ca. Stateplane, Zone 2
Datum: NAD 83
Date: 2/2/11



Visual Quality Objectives

- Preservation (P)**
Allows ecological changes only, with few exceptions.
- Retention (R)**
Provides for management activities which are not visually evident.
- Partial Retention (PR)**
Management activities remain visually subordinate to the characteristic landscape.
- Modification (M)**
Management activities may visually dominate the original characteristic landscape while remaining compatible with the natural surroundings.

NOTE:
Partial Retention VQO applies within developed recreation sites and when viewed as middleground from other managed viewsheds

USDA-FS Managed Viewsheds

- Sensitivity Level 1 Viewshed
- Sensitivity Level 2 Viewshed

PCWA Facilities and Features

- Dam
- Ancillary and Other Facilities
- Powerhouse
- Gage
- Reservoir Gage
- Penstock
- Tunnel
- Pipeline
- Gate
- Access Point
- FERC Boundary

Project Power and Communication Lines:

- Communication
- Power
- Power (underground)
- Communication/Power
- Communication/Power (underground)

Transportation

- Non-Project General Access Road
- Project Road
- Project Trail
- Recreation Access Road
- Recreation Facility Water Supply Access Road or Trail
- Other Road

Project Recreation Facilities

- Picnic Area
- Boat Ramp
- Scenic Viewpoint
- Developed Campground
- Trailer Sanitary Station
- Water Supply Line (Above ground)
- Water Supply Line (Buried)

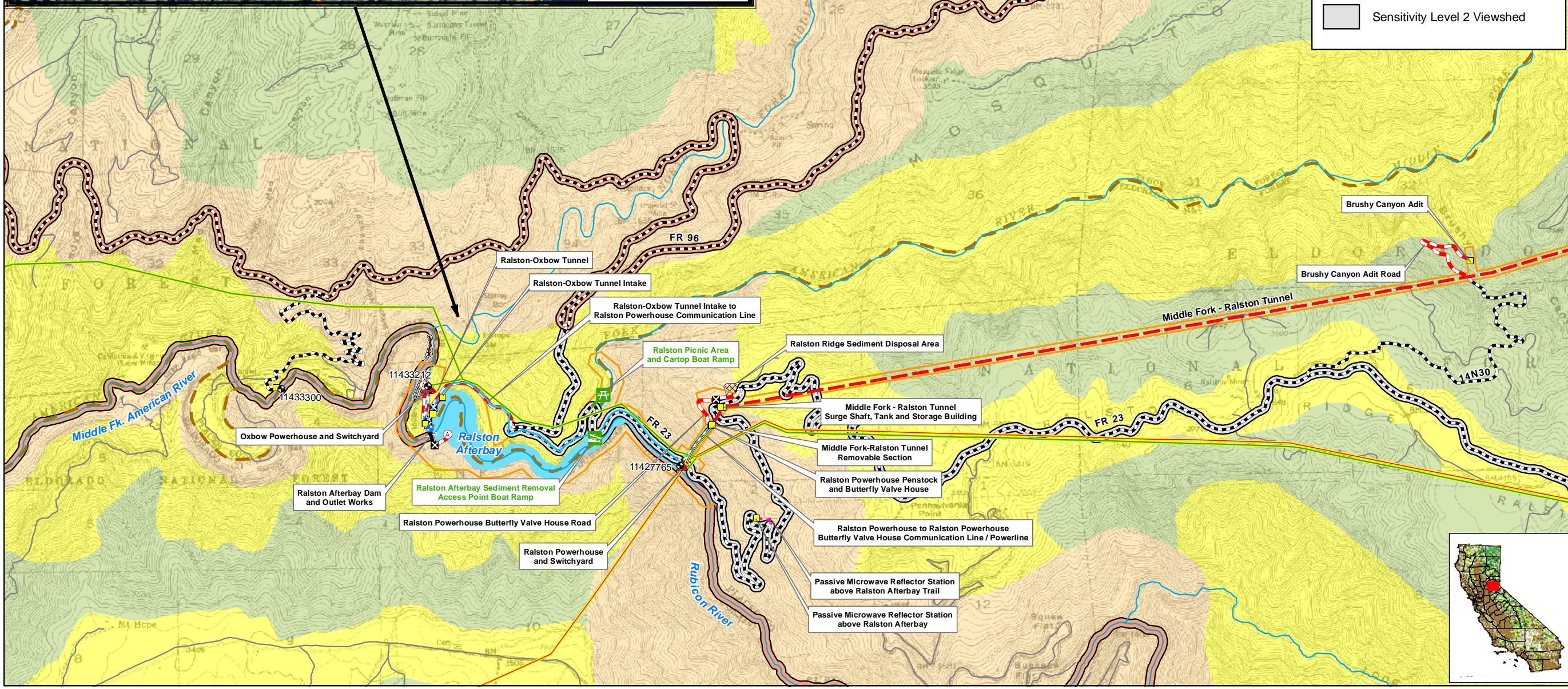
Other Facilities

PG & E Transmission Lines:

- 230 kV
- 60 kV

Placer County Water Agency
Middle Fork American River Project
Map 7.11-2d
Forest Plan Visual Quality Objectives
and USDA-FS Managed Viewsheds
in the Vicinity of the MFP
Middle Fork Interbay Area

0 0.25 0.5 Miles
Projection: Ca. Stateplane, Zone 2
Datum: NAD 83
Date: 2/2/11



Visual Quality Objectives

- Preservation (P)**
Allows ecological changes only, with few exceptions.
- Retention (R)**
Provides for management activities which are not visually evident.
- Partial Retention (PR)**
Management activities remain visually subordinate to the characteristic landscape.
- Modification (M)**
Management activities may visually dominate the original characteristic landscape while remaining compatible with the natural surroundings.

NOTE: Partial Retention VQO applies within developed recreation sites and when viewed as middleground from other managed viewsheds

USDA-FS Managed Viewsheds

- Sensitivity Level 1 Viewshed
- Sensitivity Level 2 Viewshed

PCWA Facilities and Features

- Dam
- Ancillary and Other Facilities
- Powerhouse
- Gage
- Reservoir Gage
- Penstock
- Tunnel
- Pipeline
- Gate
- Access Point
- FERC Boundary

Project Power and Communication Lines:

- Communication
- Power
- Power (underground)
- Communication/Power
- Communication/Power (underground)

Transportation

- Non-Project General Access Road
- Project Road
- Project Trail
- Recreation Access Road
- Recreation Facility Water Supply Access Road or Trail
- Other Road

Project Recreation Facilities

- Picnic Area
- Boat Ramp
- Scenic Viewpoint
- Developed Campground
- Trailer Sanitary Station
- Water Supply Line (Above ground)
- Water Supply Line (Buried)

Other Facilities

- PG & E Transmission Lines:
 - 230 kV
 - 60 kV

PCWA
Placer County Water Agency
Middle Fork American River Project
Map 7.11-2e
Forest Plan Visual Quality Objectives and USDA-FS Managed Viewsheds in the Vicinity of the MFP
Ralston Afterbay Area

0 0.25 0.5 Miles
Projection: Ca. Stateplane, Zone 2
Datum: NAD 83
Date: 2/2/11