

**Placer County Water Agency
Middle Fork American River Project
(FERC No. 2079)**

**CONTAINS CONFIDENTIAL INFORMATION
NOT FOR PUBLIC DISTRIBUTION**

**SECTION 7.6
BOTANICAL AND WILDLIFE RESOURCES
AFFECTED ENVIRONMENT**



Placer County Water Agency
P.O. Box 6570
Auburn, CA 95604

February 2011

Contains Confidential Information – Do Not Distribute

7.6 BOTANICAL AND WILDLIFE RESOURCES AFFECTED ENVIRONMENT

“Where’s the rest of the report?”

The following pages contain *only* the Confidential information from this report which could not be freely disclosed to the public (pursuant to 18 CFR 385.1112); the non-confidential portions (i.e. “the rest of the report”), can be found in **Volume 3, Book 2**.

Non-confidential Information (refer to Volume 3, Book 2)

7.6 Botanical and Wildlife Resources Affected Environment

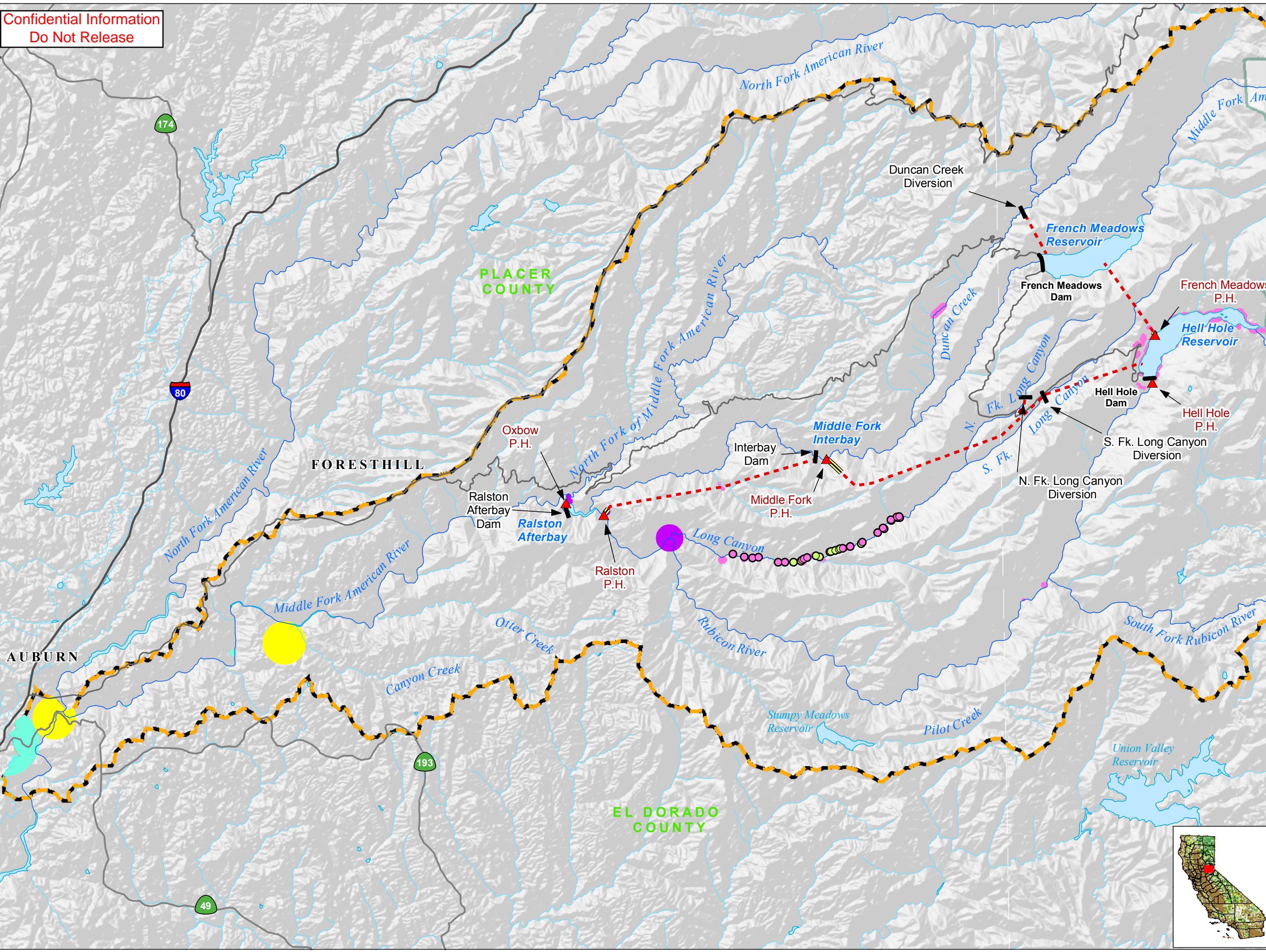
- Table 7.6-1. Vegetation Communities and Wildlife Habitats in the Vicinity of the MFP.
- Table 7.6-2. Special-status Plant Species in the Vicinity of the MFP.
- Table 7.6-3. Stebbins’ Phacelia in the Vicinity of the MFP.
- Table 7.6-4. Routine Maintenance Activities at Project Facilities and Features and Project Recreation Facilities where Stebbins' Phacelia is Present.
- Table 7.6-5. Location of Stebbin’s Phacelia Populations in the Vicinity of Hell Hole Reservoir.
- Table 7.6-6. Special-status Wildlife Species in the Vicinity of the MFP.
- Table 7.6-7. Raptor Nests and Roosts and USDA-FS Land Allocations and Important Habitat in Relation to Project Facilities and Features and Recreation Facilities and Features.
- Table 7.6-8. Game Species of the Middle Fork American Watershed.
- Table 7.6-9. MFP Target Noxious Weeds List.
- Figure 7.6-1. Timing of Bald Eagle Reproductive Activities and Associated Sensitivity Levels.
- Map 7.6-3. Location of Osprey in the Vicinity of the MFP.
- Map 7.6-4. Northern Goshawk PACs and Nest Trees Present in the Middle Fork American River Watershed.
- Map 7.6-5. California Spotted Owl PACs, Nest Trees, and Home Range Core Areas Present in the Middle Fork American River Watershed.
- Map 7.6-6a. Blue Canyon Mule Deer Herd Important Habitats and Migration Patterns in the Vicinity of the Middle Fork American River Watershed.
- Map 7.6-6b. Pacific Mule Deer Herd Important Habitats and Migration Patterns in the Middle Fork American River Watershed.
- Maps 7.6-7a–e. Location of Priority Noxious Weeds in the Vicinity of the MFP.

Contains Confidential Information – Do Not Distribute

Confidential Information (contained herein)

- Maps 7.6-1. Location of Special-Status Plant Populations in the Vicinity of the MFP.**
- Maps 7.6-1a–f. Location of Stebbins’ Phacelia at MFP Facilities and Features and Recreation Facilities and Features.**
- Map 7.6-2. Bald Eagle Nests and Night Roosts in the Vicinity of the MFP.**

Confidential Information
Do Not Release



Project Facilities

- ▲ Powerhouse
- Dam
- - - Tunnel
- == Penstock

Transportation

- Major Road
- Minor Road

Hydrography

- Watercourse
- Water Body
- Middle Fork American River Watershed*


*Modified from Calwater Ver. 2.2 to represent drainage above high-water mark of Folsom Lake

Designated Boundary

- County Boundary
- Wilderness Area


Special-Status Plants

- Stebbins' phacelia
- saw-toothed lewisa
- Red Hills soaproot
- Brandegee's clarkia
- Butte County fritillary



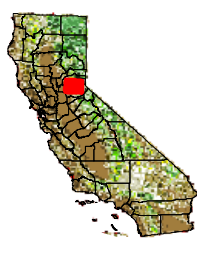
Placer County Water Agency
Middle Fork American River Project

Map 7.6-1
Location of Special-Status Plant Populations in the Vicinity of the MFP

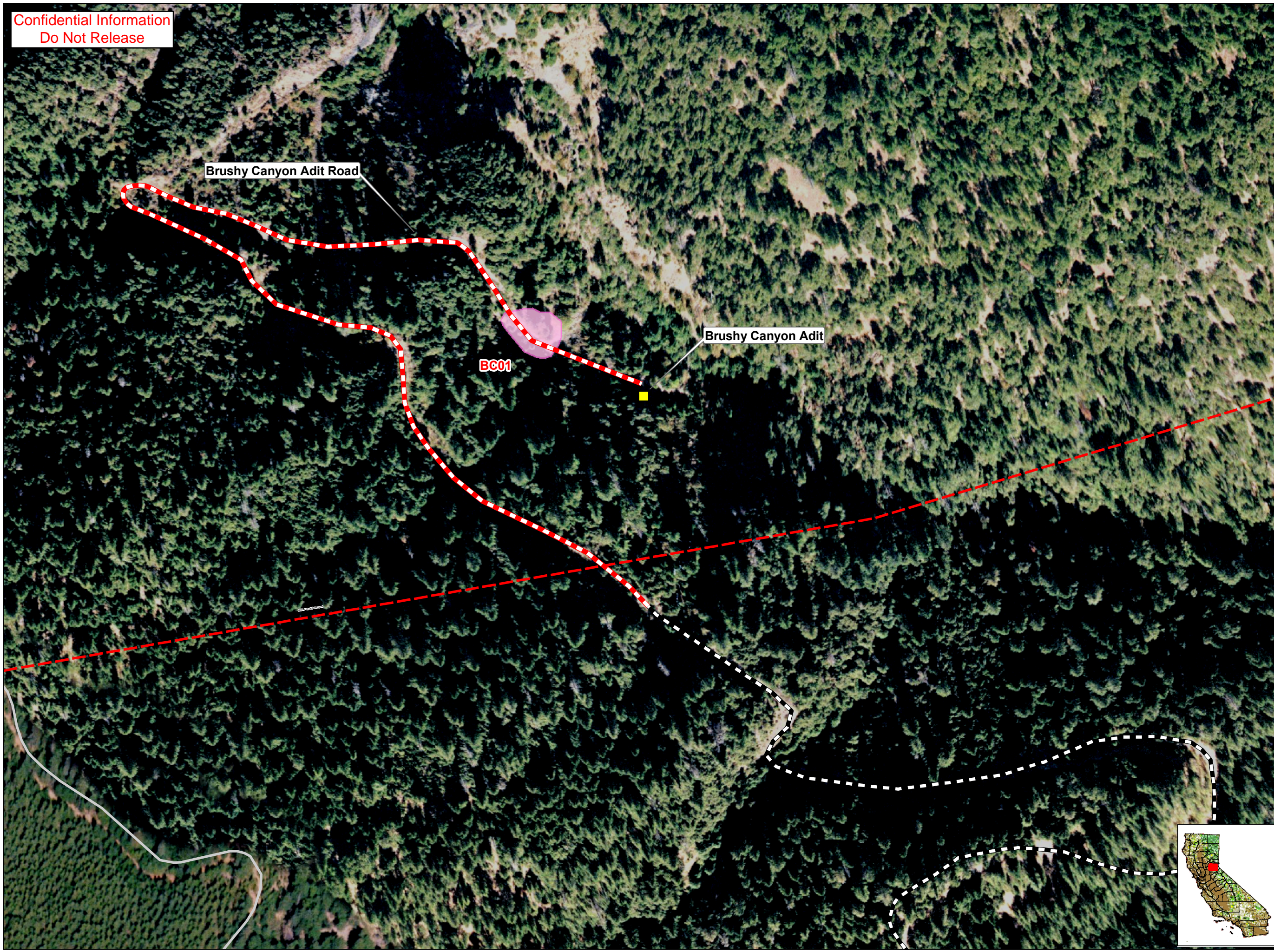


Projection: CA State Plane, Zone 2
Datum: NAD 83


Date: 9/13/10



Confidential Information
Do Not Release

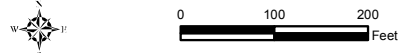
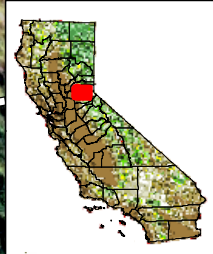


- PCWA Facilities and Features**
- Dam
 - Ancillary and Other Facilities
 - Powerhouse
 - Gage
 - Penstock
 - Tunnel
 - Pipeline
 - Access Point
- Project Power and Communication Lines:**
- Communication
 - Power
 - Power (underground)
 - Communication/Power
 - Communication/Power (underground)
- Transportation**
- Non-Project General Access Road
 - Project Road
 - Project Trail
 - Recreation Access Road
 - Recreation Water Supply Facility
 - Access Road or Trail
 - Other Road
- Project Recreation Facilities**
- Picnic Area
 - Boat Ramp
 - Scenic Viewpoint
 - Developed Campground
 - Water Supply Line
- Other Facilities**
- PG & E Transmission Lines:
- 230 kV
 - 60 kV
- Special-status Plants**
- Stebbins' phacelia population



Placer County Water Agency
Middle Fork American River Project

Map 7.6-1a
Location of Stebbins' Phacelia at MFP Facilities and Features and Recreation Facilities and Features
Brushy Canyon Area



Date: 2/9/11
Projection: Ca. Stateplane, Zone 2
Datum: NAD 83

Confidential Information
Do Not Release



- PCWA Facilities and Features**
- Dam
 - Ancillary and Other Facilities
 - Powerhouse
 - Gage
 - Penstock
 - Tunnel
 - Pipeline
 - Access Point
- Project Power and Communication Lines:**
- Communication
 - Power
 - Power (underground)
 - Communication/Power
 - Communication/Power (underground)
- Transportation**
- Non-Project General Access Road
 - Project Road
 - Project Trail
 - Recreation Access Road
 - Recreation Water Supply Facility Access Road or Trail
 - Other Road
- Project Recreation Facilities**
- Picnic Area
 - Boat Ramp
 - Scenic Viewpoint
 - Developed Campground
 - Water Supply Line
- Other Facilities**
- PG & E Transmission Lines:
- 230 kV
 - 60 kV
- Special-status Plants**
- Stebbins' phacelia population

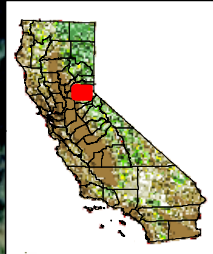
Rubicon River Gage above Ellicott Bridge

Rubicon River

Ellicott Bridge

EB01
EB02

RREB



PCWA
Placer County Water Agency
Middle Fork American River Project

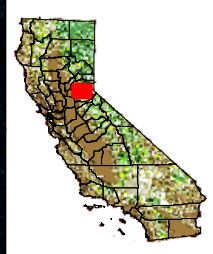
Map 7.6-1b
Location of Stebbins' Phacelia at MFP Facilities and Features and Recreation Facilities and Features
Ellicott Bridge Area

Projection: Ca. Stateplane, Zone 2
Datum: NAD 83
Date: 2/1/11

Confidential Information
Do Not Release



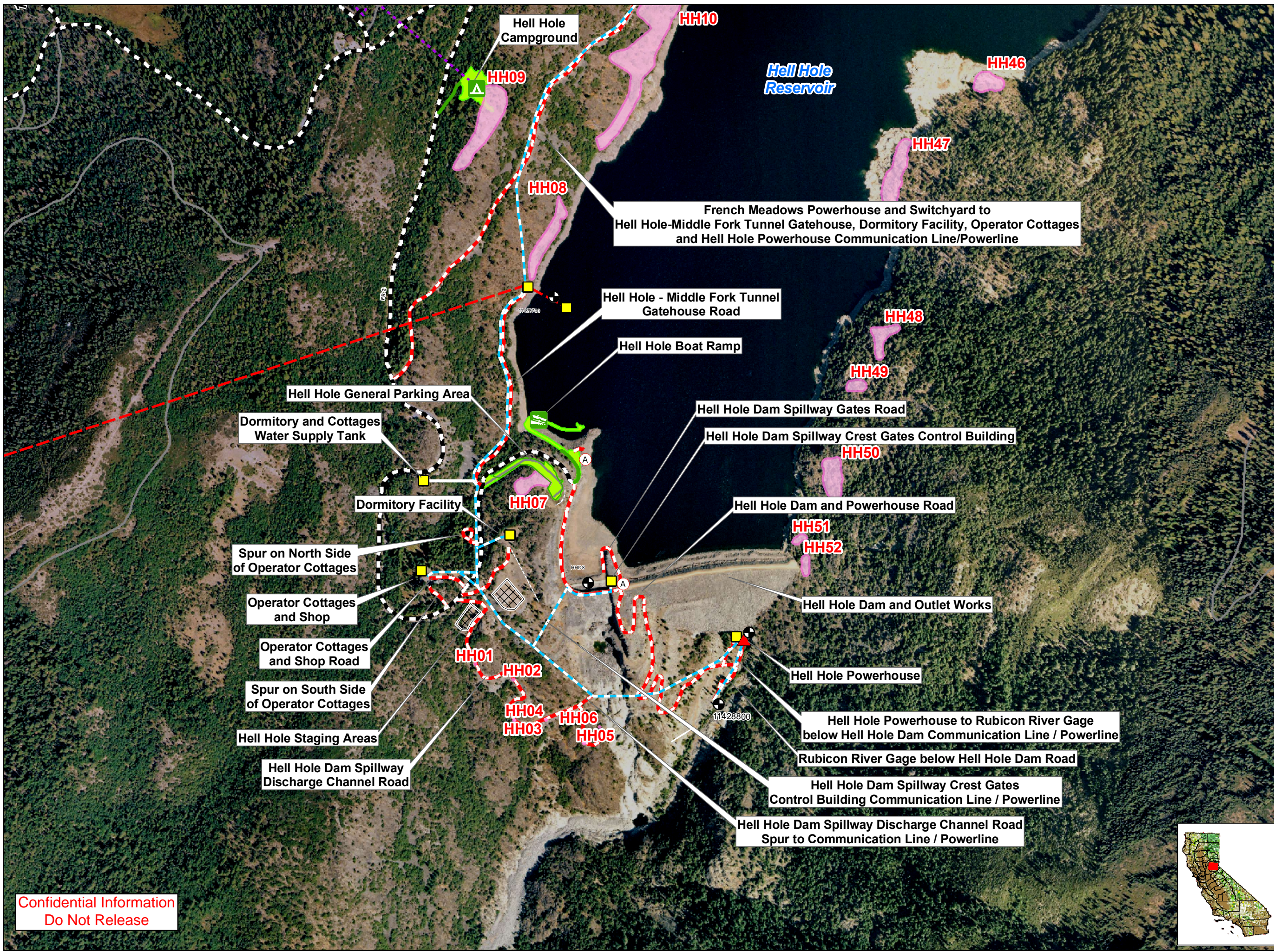
- PCWA Facilities and Features**
- Dam
 - Ancillary and Other Facilities
 - Powerhouse
 - Gage
 - Penstock
 - Tunnel
 - Pipeline
 - Access Point
- Project Power and Communication Lines:**
- Communication
 - Power
 - Power (underground)
 - Communication/Power
 - Communication/Power (underground)
- Transportation**
- Non-Project General Access Road
 - Project Road
 - Project Trail
 - Recreation Access Road
 - Recreation Water Supply Facility Access Road or Trail
 - Other Road
- Project Recreation Facilities**
- Picnic Area
 - Boat Ramp
 - Scenic Viewpoint
 - Developed Campground
 - Water Supply Line
- Other Facilities**
- PG & E Transmission Lines:
- 230 kV
 - 60 kV
- Special-status Plants**
- Stebbins' phacelia population



PCWA
Placer County Water Agency
Middle Fork American River Project

Map 7.6-1c
Location of Stebbins' Phacelia at MFP Facilities and Features and Recreation Facilities and Features
French Meadows Area

0 125 250 Feet
Projection: Ca. Stateplane, Zone 2
Datum: NAD 83
Date: 2/9/11



- PCWA Facilities and Features**
- Dam
 - Ancillary and Other Facilities
 - Powerhouse
 - Gage
 - Penstock
 - Tunnel
 - Pipeline
 - Access Point
- Project Power and Communication Lines:**
- Communication
 - Power
 - Power (underground)
 - Communication/Power
 - Communication/Power (underground)
- Transportation**
- Non-Project General Access Road
 - Project Road
 - Project Trail
 - Recreation Access Road
 - Recreation Water Supply Facility Access Road or Trail
 - Other Road
- Project Recreation Facilities**
- Picnic Area
 - Boat Ramp
 - Scenic Viewpoint
 - Developed Campground
 - Water Supply Line
- Other Facilities**
- PG & E Transmission Lines:
- 230 kV
 - 60 kV
- Special-status Plants**
- Stebbins' phacelia population

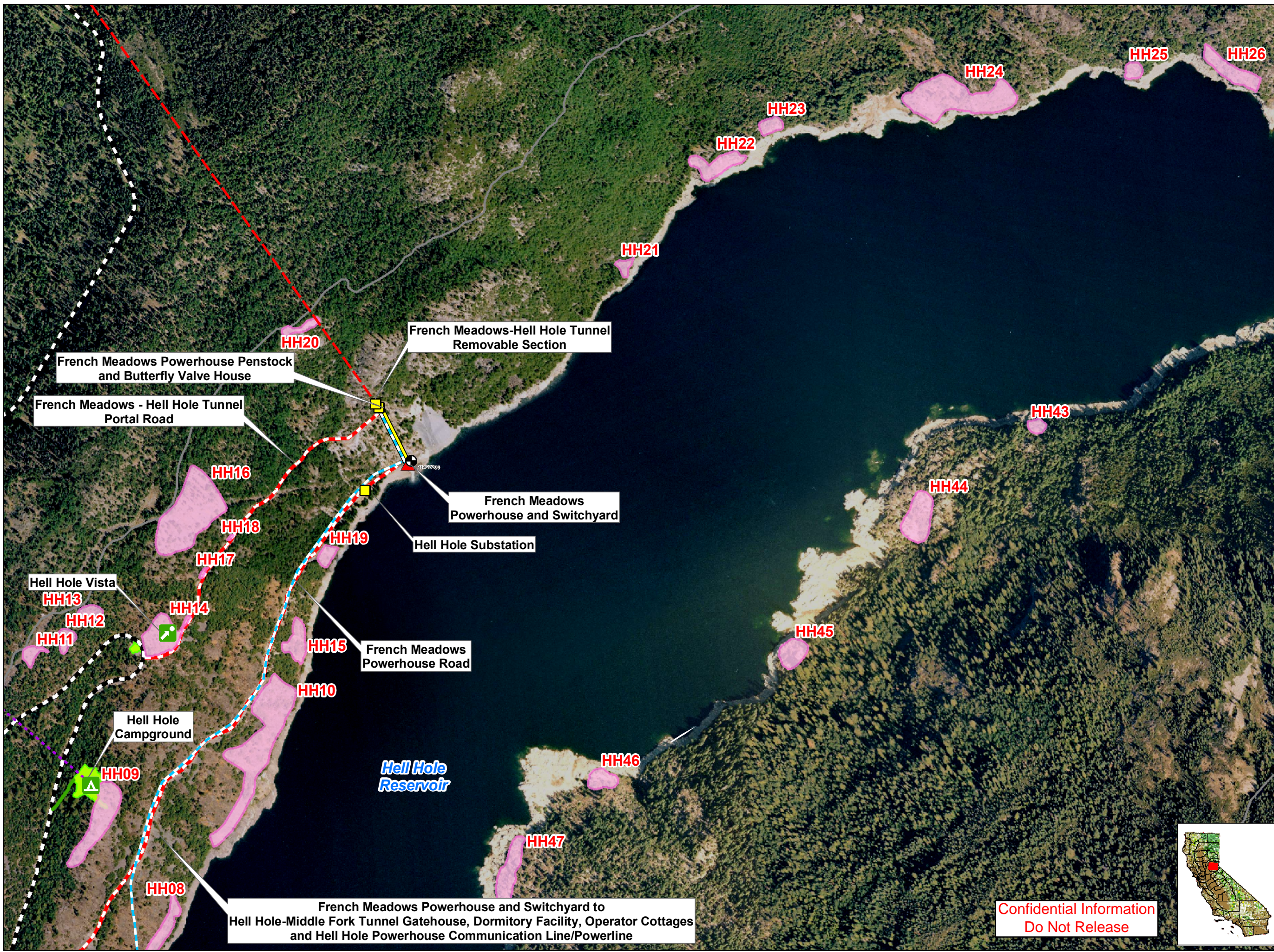
PCWA
Placer County Water Agency
Middle Fork American River Project

Map 7.6-1d
**Location of Stebbins' Phacelia
at MFP Facilities and Features
and Recreation Facilities and Features
Lower Hell Hole Area**

Date: 2/9/11

Projection: Ca. Stateplane, Zone 2
Datum: NAD 83

**Confidential Information
Do Not Release**



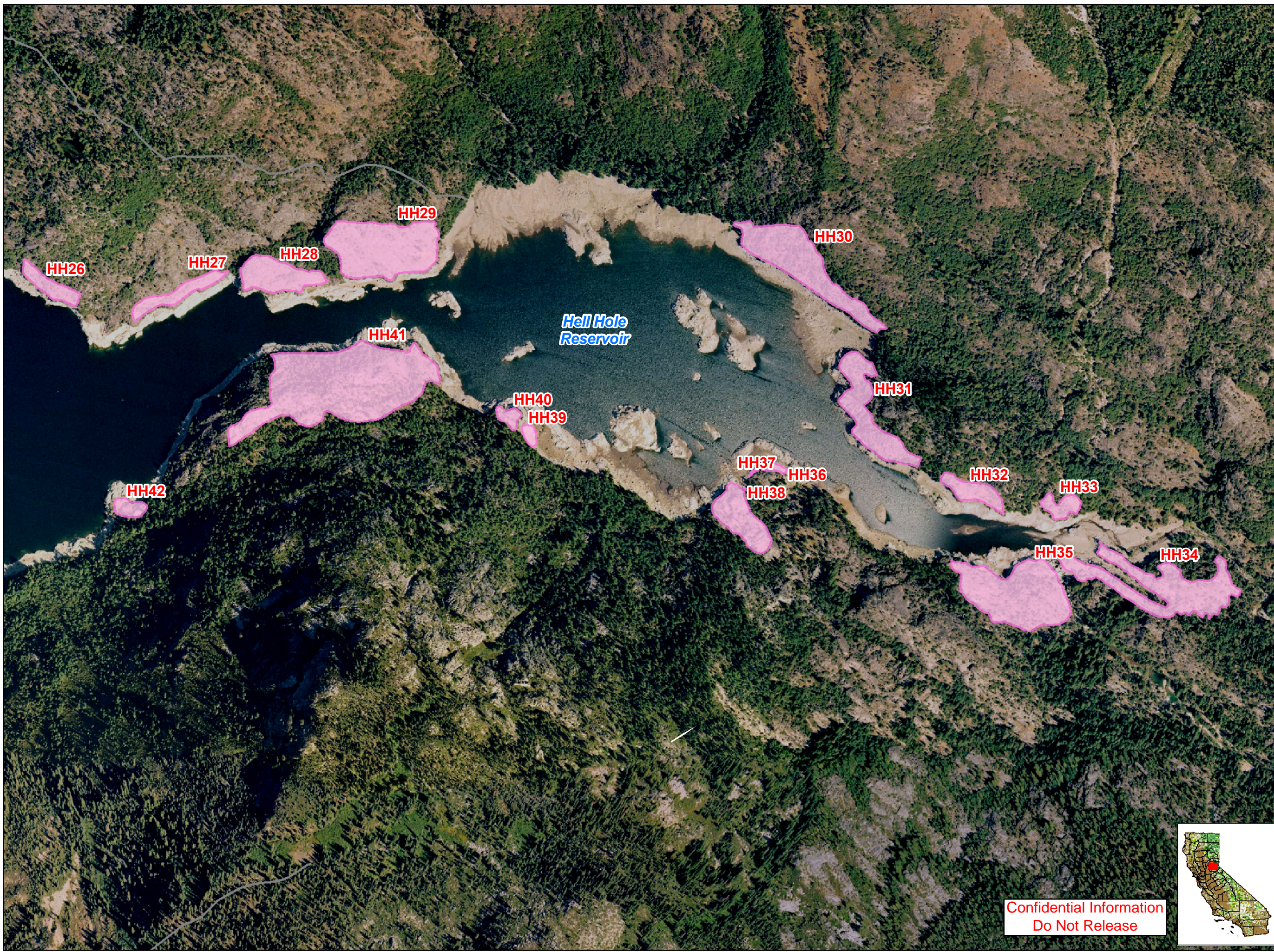
- PCWA Facilities and Features**
- Dam
 - Ancillary and Other Facilities
 - Powerhouse
 - Gage
 - Penstock
 - Tunnel
 - Pipeline
 - Access Point
- Project Power and Communication Lines:**
- Communication
 - Power
 - Power (underground)
 - Communication/Power
 - Communication/Power (underground)
- Transportation**
- Non-Project General Access Road
 - Project Road
 - Project Trail
 - Recreation Access Road
 - Recreation Water Supply Facility Access Road or Trail
 - Other Road
- Project Recreation Facilities**
- Picnic Area
 - Boat Ramp
 - Scenic Viewpoint
 - Developed Campground
 - Water Supply Line
- Other Facilities**
- PG & E Transmission Lines:
- 230 kV
 - 60 kV
- Special-status Plants**
- Stebbins' phacelia population

PCWA
Placer County Water Agency
Middle Fork American River Project

Map 7.6-1e
Location of Stebbins' Phacelia at MFP Facilities and Features and Recreation Facilities and Features Middle Hell Hole Area

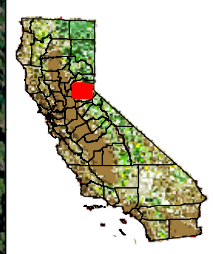
0 250 500 Feet
Projection: Ca. Stateplane, Zone 2
Datum: NAD 83
Date: 2/9/11


**Confidential Information
Do Not Release**



- PCWA Facilities and Features**
- Dam
 - Ancillary and Other Facilities
 - Powerhouse
 - Gage
 - Penstock
 - Tunnel
 - Pipeline
 - Access Point
- Project Power and Communication Lines:**
- Communication
 - Power
 - Power (underground)
 - Communication/Power
 - Communication/Power (underground)
- Transportation**
- Non-Project General Access Road
 - Project Road
 - Project Trail
 - Recreation Access Road
 - Recreation Water Supply Facility Access Road or Trail
 - Other Road
- Project Recreation Facilities**
- Picnic Area
 - Boat Ramp
 - Scenic Viewpoint
 - Developed Campground
 - Water Supply Line
- Other Facilities**
- PG & E Transmission Lines:
- 230 kV
 - 60 kV
- Special-status Plants**
- Stebbins' phacelia population

Confidential Information
Do Not Release


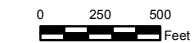




Placer County Water Agency
Middle Fork American River Project

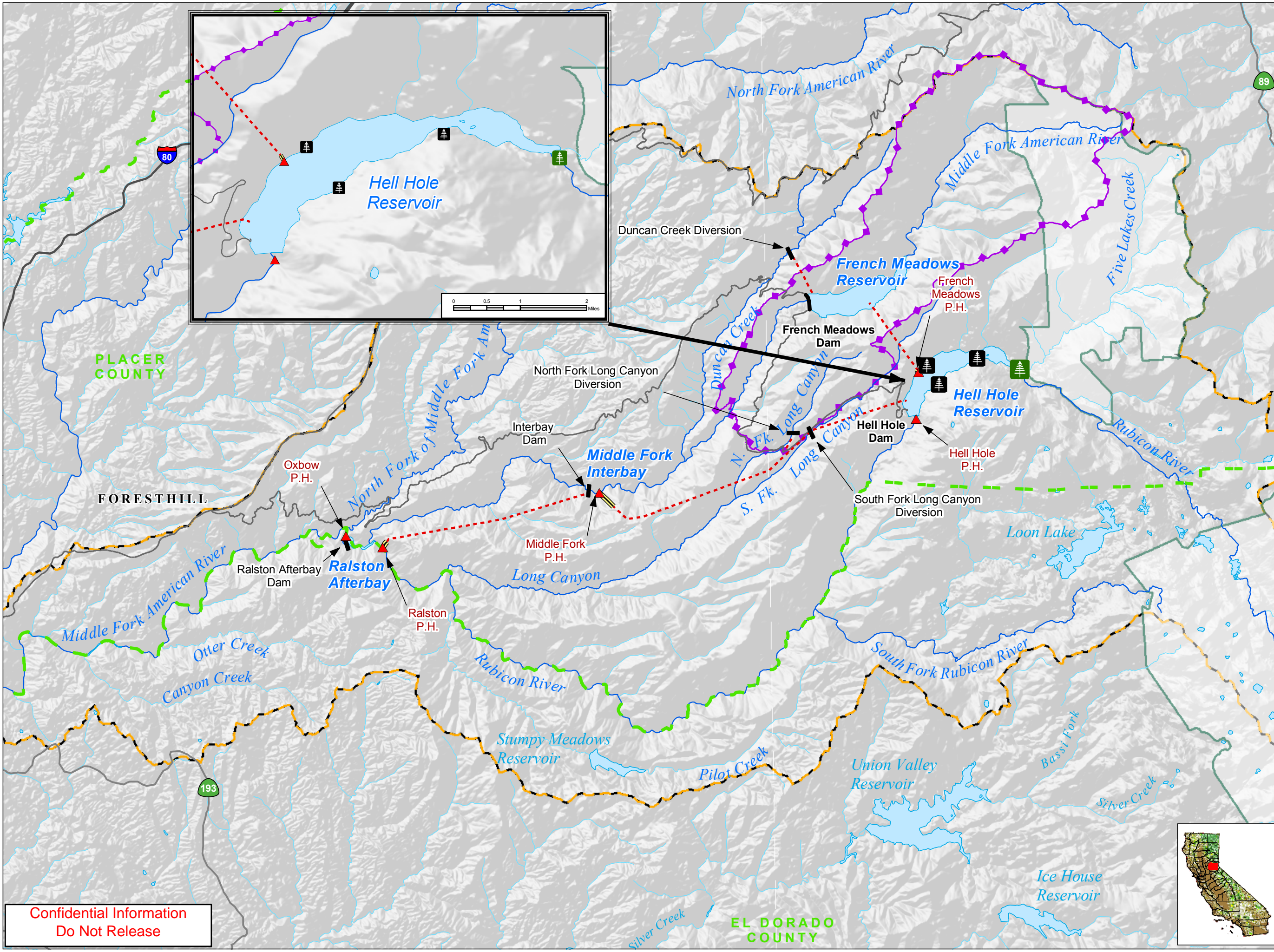
Map 7.6-1f

**Location of Stebbins' Phacelia
at MFP Facilities and Features
and Recreation Facilities and Features
Upper Hell Hole Area**

Projection: Ca. Stateplane, Zone 2
Datum: NAD 83

Date: 2/9/11



Project Facilities

- Powerhouse
- Dam
- Tunnel
- Penstock

Transportation

- Major Road
- Minor Road

Hydrography

- Watercourse
- Water Body
- Middle Fork American River Watershed*

*Modified from Calwater Ver. 2.2 to represent drainage above high-water mark of Folsom Lake

Designated Boundary

- County Boundary
- Wilderness Area
- State Game Refuge

Bald Eagle Data

PCWA Bald Eagle Surveys (2007-2008):

- Night Roost
- Nest



Placer County Water Agency
Middle Fork American River Project

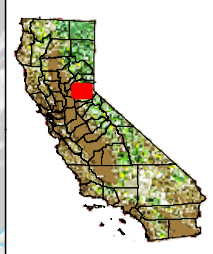
Map 7.6-2

Bald Eagle Nests and Night Roosts in the Vicinity of the MFP

Projection: CA State Plane, Zone 2
Datum: NAD 83

0 1 2 3 Miles

Date: 9/12/10



**Confidential Information
Do Not Release**