

**Placer County Water Agency
Middle Fork American River Project
(FERC Project No. 2079)**

***Vegetation & Integrated Pest
Management Plan***

**CONTAINS CONFIDENTIAL INFORMATION
NOT FOR PUBLIC DISTRIBUTION**



Placer County Water Agency
P.O. Box 6570
Auburn, CA 95604

February 2011

Contains Confidential Information – Do Not Distribute

VEGETATION AND INTEGRATED PEST MANAGEMENT PLAN

“Where’s the rest of the report?”

The following pages contain *only* the Confidential information from this report which could not be freely disclosed to the public (pursuant to 18 CFR 385.1112); the non-confidential portions (i.e. “the rest of the report”), can be found in **Volume 3, Book 4**.

Non-confidential Information (refer to Volume 3, Book 4)

- 1.0 Introduction
- 2.0 Plan Objective
- 3.0 Vegetation and Integrated Pest Management
- 4.0 Avoidance and Protection Measures
- 5.0 Special-Status Plant and Noxious Weed Inventory Surveys
- 6.0 Water Quality Monitoring
- 7.0 Agency Consultation
- 8.0 Literature Cited

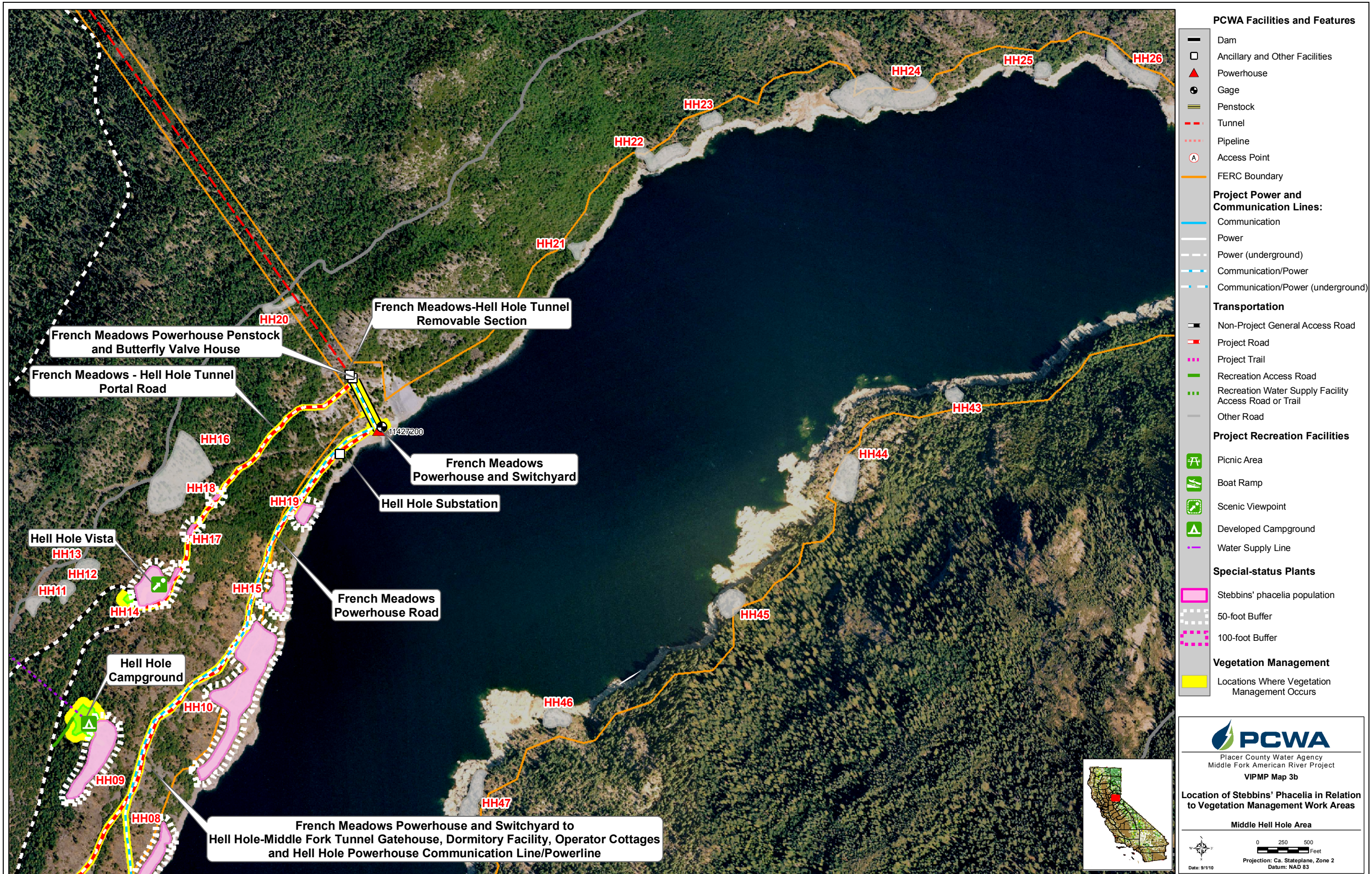
- VIPMP Table 1. Vegetation and Pest Management Activities to be Implemented at Existing Project Facilities and Features and Project Recreation Facilities.
- VIPMP Table 2. Herbicides, Surfactants, Fungicides, and Rodenticides to be Used at Select Project Facilities.
- VIPMP Table 3. ENF and TNF Priority Noxious Weeds.
- VIPMP Table 4. MFP Target Noxious Weeds List.
- VIPMP Table 5. Manual and Chemical Treatment of MFP Target Noxious Weeds.
- VIPMP Table 6. MFP Target Noxious Weeds to be Treated Using Manual/Chemical Methods.
- VIPMP Table 7. MFP Target Noxious Weeds by Treatment Area.
- VIPMP Table 8. Avoidance and Protection Measures for Environmental Resources and Human Health and Safety.
- VIPMP Table 9. Streamside Protective Buffers for Pesticide Applications.
- VIPMP Figure 1. Five-Year Treatment and Monitoring Cycle for Target Noxious Weed Populations Outside of Vegetation Management Areas.
- VIPMP Map 1. Middle Fork Project and Vicinity.

Non-confidential Information (continued)

- VIPMP Maps 2a–2e. Location of Select Noxious Weed Populations to be Controlled using Manual/Chemical Methods.
- Attachment A. USDA-FS Guide to Noxious Weed Prevention Practices.
- Attachment B. Chapter 2070, Native Plant Materials (Forest Service Manual, National Headquarters, National Forest Resource Management).
- Attachment C. Chapter 40, Revegetation (Forest Service Handbook, Pacific Southwest Region 5, Botanical Program Management).
- Attachment D. Seeding Guidelines for the Tahoe National Forest.
- Attachment E. Seeding Guidelines for the Eldorado National Forest.
- Attachment F. USDA-FS Native Plant Policy (Region 5).
- Attachment G. Appendix A, Record of Decision for the Sierra Nevada Forest Plan Amendment Final Environmental Impact Statement.
- Attachment H. Water Quality Monitoring Plan.

Confidential Information (contained herein)

- VIPMP Maps 3a–3e. Location of Stebbins' Phacelia in Relation to Vegetation Management Work Areas.**





PCWA Facilities and Features

- Dam
- Ancillary and Other Facilities
- Powerhouse
- Gage
- Penstock
- Tunnel
- Pipeline
- Access Point
- FERC Boundary

Project Power and Communication Lines:

- Communication
- Power
- Power (underground)
- Communication/Power
- Communication/Power (underground)

Transportation

- Non-Project General Access Road
- Project Road
- Project Trail
- Recreation Access Road
- Recreation Water Supply Facility Access Road or Trail
- Other Road

Project Recreation Facilities

- Picnic Area
- Boat Ramp
- Scenic Viewpoint
- Developed Campground
- Water Supply Line

Special-status Plants

- Stebbins' phacelia population
- 50-foot Buffer
- 100-foot Buffer

Vegetation Management

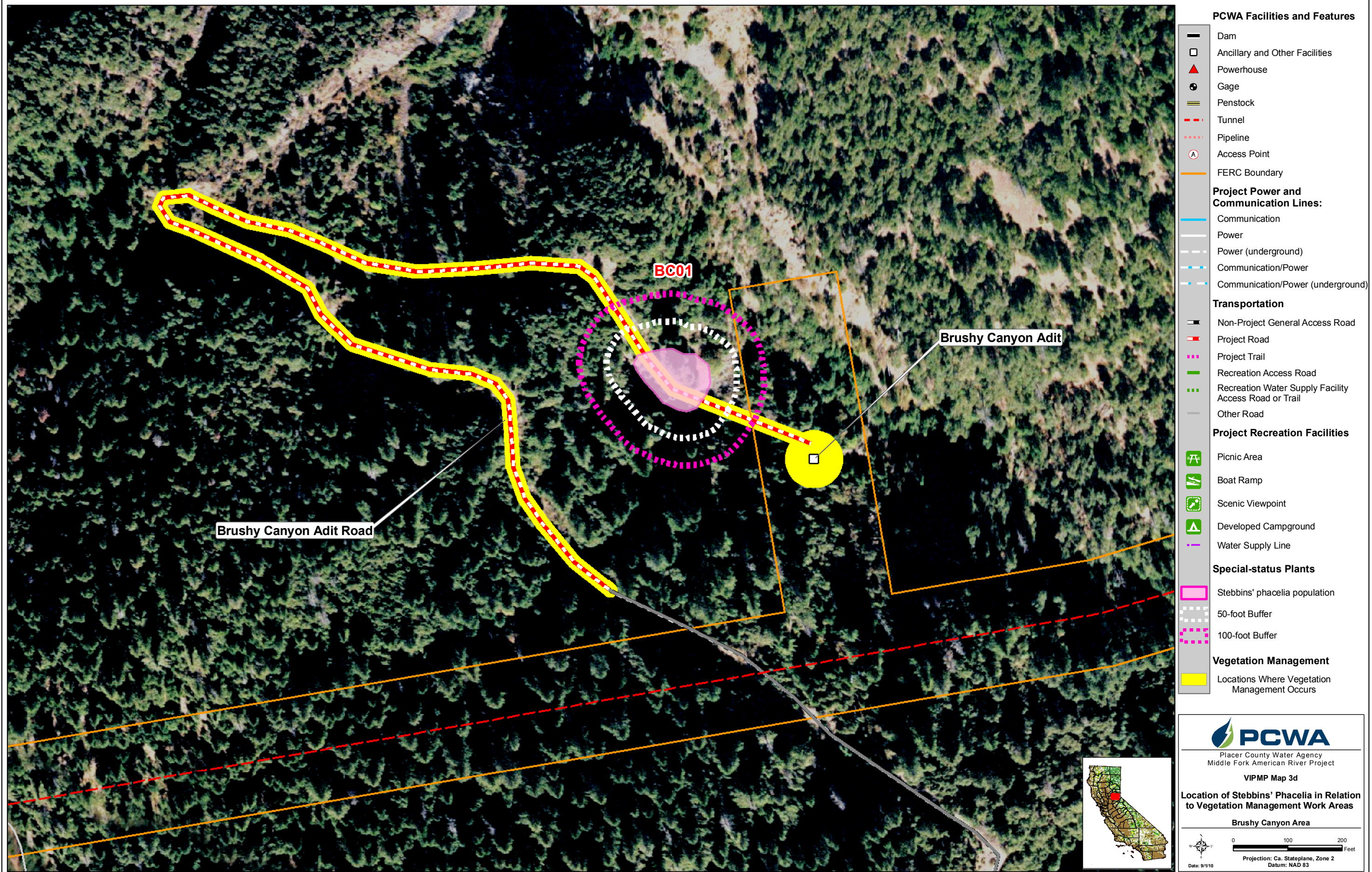
- Locations Where Vegetation Management Occurs

PCWA
Placer County Water Agency
Middle Fork American River Project
VIPMP Map 3c

Location of Stebbins' Phacelia in Relation to Vegetation Management Work Areas

Upper Hell Hole Area

0 250 500 Feet
Projection: Ca. Stateplane, Zone 2
Datum: NAD 83
Date: 9/1/10



- PCWA Facilities and Features**
- Dam
 - Ancillary and Other Facilities
 - ▲ Powerhouse
 - ⊙ Gage
 - ≡ Penstock
 - - - Tunnel
 - ⋯ Pipeline
 - Ⓐ Access Point
 - FERC Boundary
- Project Power and Communication Lines:**
- Communication
 - Power
 - - - Power (underground)
 - · - · - Communication/Power
 - · - · - Communication/Power (underground)
- Transportation**
- Non-Project General Access Road
 - · - · - Project Road
 - ⋯ Project Trail
 - Recreation Access Road
 - ⋯ Recreation Water Supply Facility Access Road or Trail
 - Other Road
- Project Recreation Facilities**
- Ⓜ Picnic Area
 - Ⓡ Boat Ramp
 - 🏠 Scenic Viewpoint
 - Ⓜ Developed Campground
 - Water Supply Line
- Special-status Plants**
- Stebbins' phacelia population
 - 50-foot Buffer
 - 100-foot Buffer
- Vegetation Management**
- Locations Where Vegetation Management Occurs

PCWA
Placer County Water Agency
Middle Fork American River Project

VIPMP Map 3d

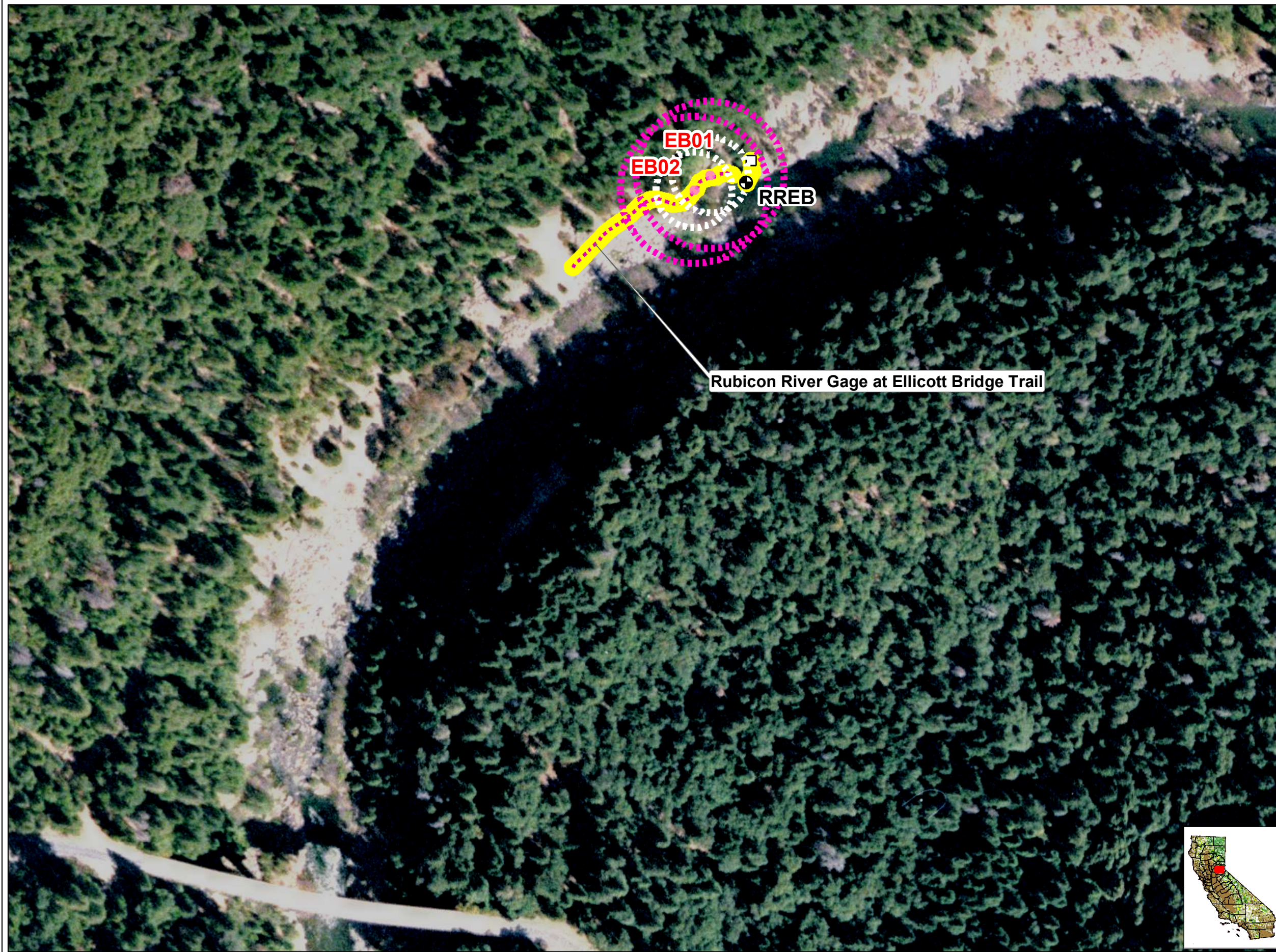
Location of Stebbins' Phacelia in Relation to Vegetation Management Work Areas

Brushy Canyon Area

0 100 200 Feet

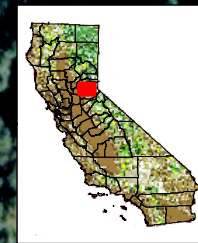
Projection: Ca. Stateplane, Zone 2
Datum: NAD 83

Date: 9/1/10



Rubicon River Gage at Ellicott Bridge Trail

- PCWA Facilities and Features**
- Dam
 - Ancillary and Other Facilities
 - ▲ Powerhouse
 - ⊙ Gage
 - ≡ Penstock
 - - - Tunnel
 - ⋯ Pipeline
 - Ⓐ Access Point
 - FERC Boundary
- Project Power and Communication Lines:**
- Communication
 - Power
 - - - Power (underground)
 - · - · - Communication/Power
 - · - · - Communication/Power (underground)
- Transportation**
- Non-Project General Access Road
 - Project Road
 - · · Project Trail
 - Recreation Access Road
 - · · Recreation Water Supply Facility Access Road or Trail
 - Other Road
- Project Recreation Facilities**
- ⊕ Picnic Area
 - ⚓ Boat Ramp
 - 🏞 Scenic Viewpoint
 - ⛺ Developed Campground
 - Water Supply Line
- Special-status Plants**
- ▭ Stebbins' phacelia population
 - 50-foot Buffer
 - ▭ 100-foot Buffer
- Vegetation Management**
- ▭ Locations Where Vegetation Management Occurs



PCWA
 Placer County Water Agency
 Middle Fork American River Project

VIPMP Map 3e

Location of Stebbins' Phacelia in Relation to Vegetation Management Work Areas

Ellicott Bridge Area

0 50 100 Feet
 Projection: Ca. Stateplane, Zone 2
 Datum: NAD 83
 Date: 9/1/10