

**Placer County Water Agency  
Middle Fork American River Project  
(FERC No. 2079)**

***DRAFT***

**CONTAINS CONFIDENTIAL INFORMATION  
NOT FOR PUBLIC DISTRIBUTION**

**BIOLOGICAL ASSESSMENT/  
BIOLOGICAL EVALUATION**



Placer County Water Agency  
P.O. Box 6570  
Auburn, CA 95604

February 2011

## Contains Confidential Information – Do Not Distribute

### **BIOLOGICAL ASSESSMENT/BIOLOGICAL EVALUATION**

#### ***“Where’s the rest of the report?”***

The following pages contain *only* the Confidential information from this report which could not be freely disclosed to the public (pursuant to 18 CFR 385.1112); the non-confidential portions (i.e. “the rest of the report”), can be found in **Volume 3, Book 12**.

#### **Non-confidential Information (refer to Volume 3, Book 12)**

- 1.0 Introduction
  - 2.0 Consultation History and Summary
  - 3.0 Current Regulatory Management
  - 4.0 No-Action Alternative and Proposed Action
  - 5.0 Existing Environment
  - 6.0 Effects of Proposed Action and Management Recommendations
  - 7.0 Effects of the No-Action Alternative
  - 8.0 Cumulative Effects
  - 9.0 Conclusions and Determinations
  - 10.0 Literature Cited
  - 11.0 List of Preparers
- 
- BA/BE Table 1. Special-status Plants in the Vicinity of the MFP.
  - BA/BE Table 2. Special-status Wildlife in the Vicinity of the MFP.
  - BA/BE Table 3. Middle Fork American River Project History.
  - BA/BE Table 4. No-Action Alternative – Project Facilities and Features.
  - BA/BE Table 5. No-Action Alternative – Project Recreation Facilities and Features.
  - BA/BE Table 6. Project Facility Specifications.
  - BA/BE Table 7. Description of Project Communication Lines and Power Lines.
  - BA/BE Table 8. Description of Project Roads and Trails.
  - BA/BE Table 9. Description of Project Recreation Facilities.
  - BA/BE Table 10. Description of Recreation Facility Water Supplies and Associated Maintenance Access Roads or Trails.
  - BA/BE Table 11. Description of Current Facility Inspections, Testing, and Maintenance Activities at Project Facilities and Features.
  - BA/BE Table 12. Description of Project Recreation Facilities Maintenance Activities.
  - BA/BE Table 13. Summary of Historic Sediment Maintenance Activities at MFP Diversion Pools and Medium Reservoirs (through 2009).
  - BA/BE Table 14. Available Sediment Storage Capacities at Current MFP Sediment Disposal Areas.

## Contains Confidential Information – Do Not Distribute

### **Non-confidential Information (continued)**

- BA/BE Table 15. Bypass and Peaking Reach Average Width and Average Annual Flow.
- BA/BE Table 16. Minimum Pool and Minimum Instream Flow Requirements.
- BA/BE Table 17. Summary of Water Rights Permits.
- BA/BE Table 18. Summary of MFP Generation (1967–2006).
- BA/BE Table 19. Proposed Action – Project Facilities and Features.
- BA/BE Table 20. Proposed Action – Project Recreation Facilities and Features.
- BA/BE Table 21. Project Gaging Stations and Weirs.
- BA/BE Table 22. Proposed Action – Description of Routine Facility Inspections, Testing, and Maintenance Activities at Project Facilities and Features.
- BA/BE Table 23. Proposed Action – Description of Routine Maintenance at Project Roads and Trails.
- BA/BE Table 24. Proposed Action - Description of Routine Maintenance at Project Recreation Facilities and Features.
- BA/BE Table 25. Stebbins' Phacelia in the Vicinity of the MFP.
- BA/BE Table 26. Routine Maintenance Activities at Project Facilities and Features and Project Recreation Facilities where Stebbins' Phacelia is Present.
- BA/BE Table 27. Location of Stebbins' Phacelia Populations in the Vicinity of Hell Hole Reservoir.
- BA/BE Table 28a. Middle Fork American River below Middle Fork Interbay Water Temperature Profiles (July-August) and the Corresponding River Mile at which the Water Temperature Reaches 17°C and 20°C.
- BA/BE Table 28b. Rubicon River Water Temperature Profiles (July-August) and the Corresponding River Mile at which the Water Temperature Reaches 17°C and 20°C.
- BA/BE Table 29. Species and Life Stage Periodicities
- BA/BE Table 30. Raptor Nests and Roosts and USDA-FS Land Allocations in Relation to Project Facilities and Features and Recreation Facilities and Features.
- BA/BE Table 31. Comparison of the Frequency and Duration of Inundation of Hell Hole Reservoir Areas 2a and 2b at Various Reservoir Elevation Levels.
- BA/BE Table 32. Number of Days, Years, and Average Number of Days Pulse Flows Occur by Water Year Type under the Proposed Action and No-Action Alternative.

## Contains Confidential Information – Do Not Distribute

### **Non-confidential Information (continued)**

- BA/BE Table 33a. Middle Fork American River below Middle Fork Interbay Water Temperature Profiles (July–August) and the Corresponding River Mile at which the Water Temperature Reaches 17°C and 20°C.
- BA/BE Table 33b. Rubicon River Water Temperature Profiles (July–August) and the Corresponding River Mile at which the water Temperature Reaches 17°C and 20°C.
- BA/BE Table 34. Small Streams Wetted Perimeter Time Series Summary Comparing the 50% Exceedance Wetted Perimeter of the Proposed Action to the Existing License Condition and No-Action Wetted Perimeter.
- BA/BE Table 35. Middle Fork American River Peaking Reach Percent Change in Wetted Bed Area Based on the Existing License Condition Minimum Flows versus Proposed Action Minimum Flows.
- BA/BE Table 36. Small Streams Habitat Summary Table Comparing the 50% Habitat Exceedance of the Proposed Action to the Existing License Conditions and No-Action Alternative Habitat Values.
- BA/BE Table 37. Rubicon River Habitat Summary Table Comparing the 50% Habitat Exceedance of the Proposed Action to the Existing License Conditions and No-Action Alternative Habitat Values.
- BA/BE Table 38. Summary of Management Objectives that Apply to Aquatic Resources within the Middle Fork Project.
- BA/BE Table 39. Qualitative Assessment of Spill Events with Potential to Impact Foothill Yellow-Legged Frog Tadpoles and Egg Masses.
- 
- BA/BE Figure 1. PCWA's Endangered Species Act (ESA) Section 7 Consultation Process and Related Activities for the MFP Relicensing.
- BA/BE Figure 2. MFP Facilities Elevation Profile.
- BA/BE Figure 3. MFP Transmission, Power, and Communications Schematic.
- BA/BE Figure 4. PCWA Deliveries for Consumptive Demand (1990–2007).
- BA/BE Figure 5. Typical Seasonal Demand Pattern.
- BA/BE Figure 6. Typical Weekly Energy Demand and Production.
- BA/BE Figure 7. Total MFP Inflow (Combined Flows from Duncan Creek, Middle Fork American River, Rubicon River, and Long Canyon Creek) from 1975–2007.
- BA/BE Figure 8. Combined Reservoir Storage Levels (French Meadows and Hell Hole) and Spills from 1974 through 2007.
- BA/BE Figure 9. Water Surface Elevations at Ralston Afterbay – Winter.
- BA/BE Figure 10. Water Surface Elevations at Ralston Afterbay – Spring.
- BA/BE Figure 11. Water Surface Elevations at Ralston Afterbay – Summer.
- BA/BE Figure 12. Water Surface Elevations at Ralston Afterbay – Fall.

## Contains Confidential Information – Do Not Distribute

### **Non-confidential Information (continued)**

- BA/BE Figure 13. Releases vs. Reservoir Storage, Drier Period (1987–1992).
- BA/BE Figure 14. Releases vs. Reservoir Storage, Wetter Period (1995–1998).
- BA/BE Figure 15. Benefits of Proposed Action.
- BA/BE Figure 16. Resources Stewardship Provided by the Proposed Action
- BA/BE Figure 17. Water Temperatures Measured at Three Locations in the Middle Fork American River between Middle Fork Interbay and Ralston Afterbay (River Mile 35.5, 29.4, and 26.0) in 2006, 2007, 2008.
- BA/BE Figure 18. Water Temperature at Three Locations in the Middle Fork American River between Ralston Afterbay and the Confluence with the North Fork American River (River Mile 23.1, 14.3, and 0.1) and One Location in the North Fork American River below the Confluence (River Mile 20.8) in 2006, 2007, and 2008.
- BA/BE Figure 19. Water Temperature Measured at Four Locations in the Rubicon River between Hell Hole Reservoir and Ralston Afterbay (River Mile 28.8, 22.5, 14.3, and 0.7) in 2006, 2007, and 2008.
- BA/BE Figure 20. Water Temperature Measured in Long Canyon Creek at Three Locations (River Mile 0.1, 6.8, and 11.1) in 2006, 2007, and 2008.
- BA/BE Figure 21. Timing of Bald Eagle Reproductive Activities and Associated Sensitivity Levels.
- BA/BE Figure 22. Potential Effects on Resources from Implementation of the Proposed Action.
- BA/BE Figure 23. Average Flow Fluctuations in the Peaking Reach for the Proposed Action and No-Action Alternatives in Summer/Fall (Jun-Oct), Winter (Nov-Feb), and Spring (Mar-May).
- BA/BE Figure 24. Average Ratio of Flow Fluctuations in the Peaking Reach for the Proposed Action and No-Action Alternatives in Spring (Mar-May), Summer/Fall (Jun-Oct), and Winter (Nov-Feb).
- BA/BE Figure 25. Long Canyon Creek Resulting Effects.
- BA/BE Figure 26. Middle Fork American River below Middle Fork Interbay Resulting Effects.
- BA/BE Figure 27. Rubicon River below Hell Hole Reservoir Resulting Effects.
- BA/BE Figure 28. Middle Fork American River below Ralston Afterbay (Peaking Reach) Resulting Effects.
- BA/BE Figure 29. Average Monthly Flow Into Folsom Reservoir Under the Proposed Action Future – Demand and No-Action Alternative by Water Year Type.
- BA/BE Figure 30. North Fork American River Modeled Mean Monthly Water Temperature at the Folsom Reservoir High Water Mark in a Wet Water Year Type (2006) and Dry Water Year Type (2007) Under the Proposed Action – Future Demand and No-Action Alternative.

## Contains Confidential Information – Do Not Distribute

### **Non-confidential Information (continued)**

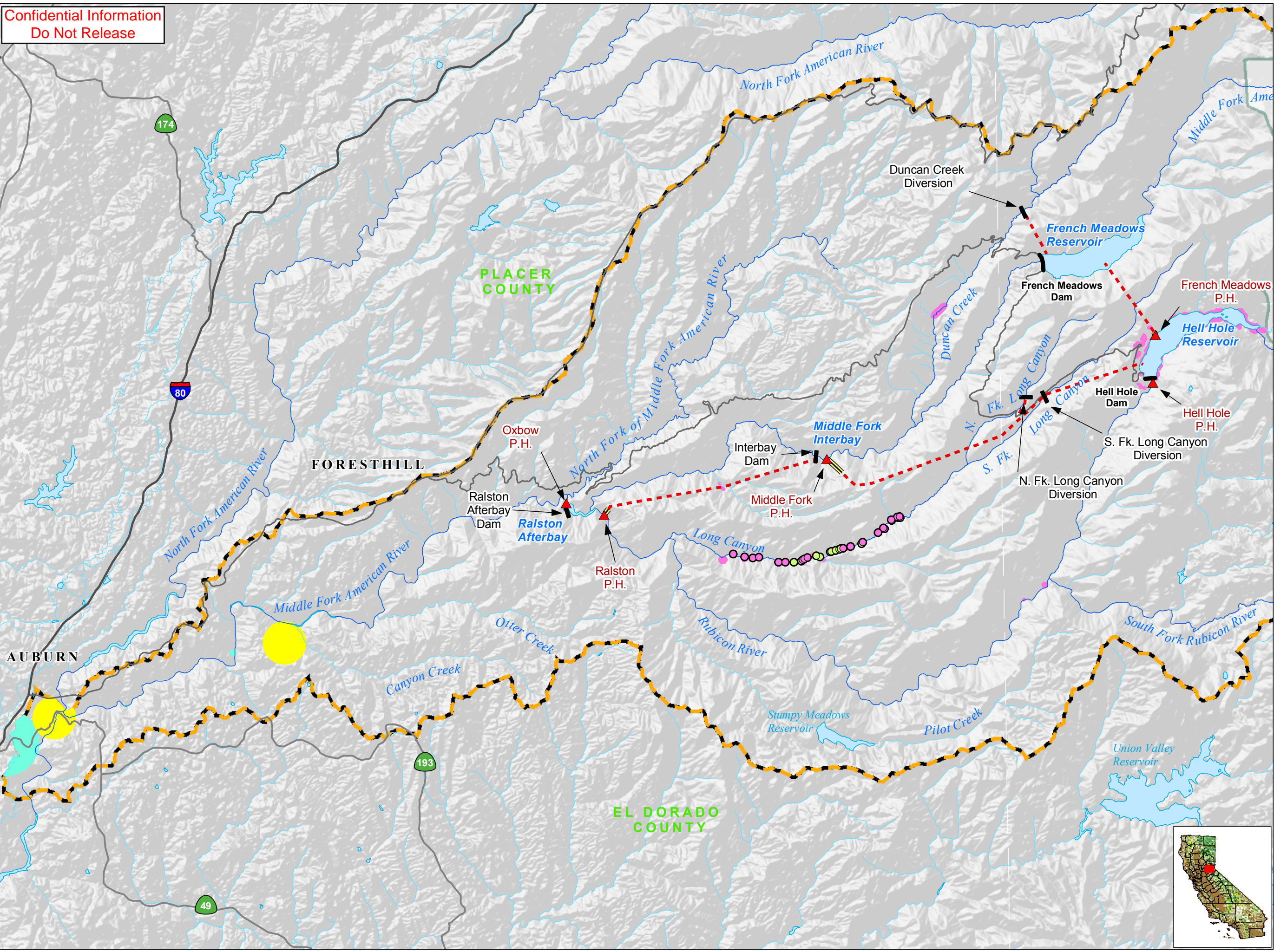
BA/BE Map 1.	Middle Fork Project and Vicinity.
BA/BE Map 2a.	Duncan Creek, French Meadows Area (No-Action Alternative).
BA/BE Map 2b.	Hell Hole Area (No-Action Alternative).
BA/BE Map 2c.	Long Canyon Area (No-Action Alternative).
BA/BE Map 2d.	Middle Fork Interbay Area (No-Action Alternative).
BA/BE Map 2e.	Ralston, Oxbow Area (No-Action Alternative).
BA/BE Map 3a.	Duncan Creek, French Meadows Area (Proposed Action).
BA/BE Map 3b.	Hell Hole Area (Proposed Action).
BA/BE Map 3c.	Long Canyon Area (Proposed Action).
BA/BE Map 3d.	Middle Fork Interbay Area (Proposed Action).
BA/BE Map 3e.	Ralston, Oxbow Area (Proposed Action).
BA/BE Map 4a–b.	Special-status Mammals in the Vicinity of the MFP.
BA/BE Map 7.	Water Supply Model Node Locations.
BA/BE Map 8.	Measured August 2007 Average Water Temperature in Project Streams (Temperature Values Linearly Interpolated between Monitoring Locations).
BA/BE Map 9.	Fish Passage Barrier Locations and Frequency.
BA/BE Map 10.	Foothill Yellow-Legged Frog Study Site Locations.
BA/BE Map 11.	Foothill Yellow-Legged Frog Habitat Suitability.
BA/BE Map 12.	Foothill Yellow-Legged Frog Distribution and Abundance.
BA/BE Map 13.	Western Pond Turtle Incidental Sightings in the Middle Fork American River Watershed.
BA/BE Map 15.	Northern Goshawk PACs and Nest Trees Present in the Middle Fork American River Watershed.
BA/BE Map 16.	California Spotted Owl PACs, Nest Trees, and Home Range Core Areas Present in the Middle Fork American River Watershed.
BA/BE Map 17.	Principal Project Facilities and Geographic Setting.
BA/BE Appendix A	United States Fish and Wildlife Services Species List.
BA/BE Appendix B.	Life Histories for Federal Special-status Plant and Wildlife Species Known or Potentially Occurring in the Vicinity of the Placer County Water Agency Proposed Projects.
BA/BE Appendix C	Modified or New Facilities Construction Activities and Concept Designs.
BA/BE Appendix D	California Red-Legged Frog Site Assessment.
BA/BE Appendix E	California Red-Legged Frog Protocol-Level Survey Report.

Contains Confidential Information – Do Not Distribute

**Confidential Information (contained herein)**

<b>BA/BE Map 5.</b>	<b>Location of Special-status Plant Populations in the Vicinity of the MFP.</b>
<b>BA/BE Maps 6a–6f.</b>	<b>Location of Stebbins’ Phacelia at MFP Facilities and Features and Recreation Facilities and Features.</b>
<b>BA/BE Map 14.</b>	<b>Bald Eagle Nests and Night Roosts in the Vicinity of the MFP.</b>
<b>BA/BE Appendix D, Map 3</b>	<b>Known Locations of CRLF in the Middle Fork American River Watershed.</b>

Confidential Information  
Do Not Release



**Project Facilities**

- Powerhouse
- Dam
- Tunnel
- Penstock

**Transportation**

- Major Road
- Minor Road

**Hydrography**

- Watercourse
- Water Body
- Middle Fork American River Watershed\*

\*Modified from Calwater Ver. 2.2 to represent drainage above high-water mark of Folsom Lake

**Designated Boundary**

- County Boundary
- Wilderness Area

**Special-Status Plants**

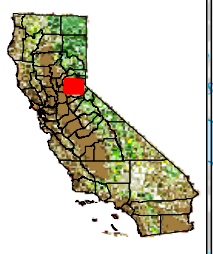
- Stebbins' phacelia
- saw-toothed lewisa
- Brandegee's clarkia
- Butte County fritillary



Placer County Water Agency  
Middle Fork American River Project

BA/BE Map 5

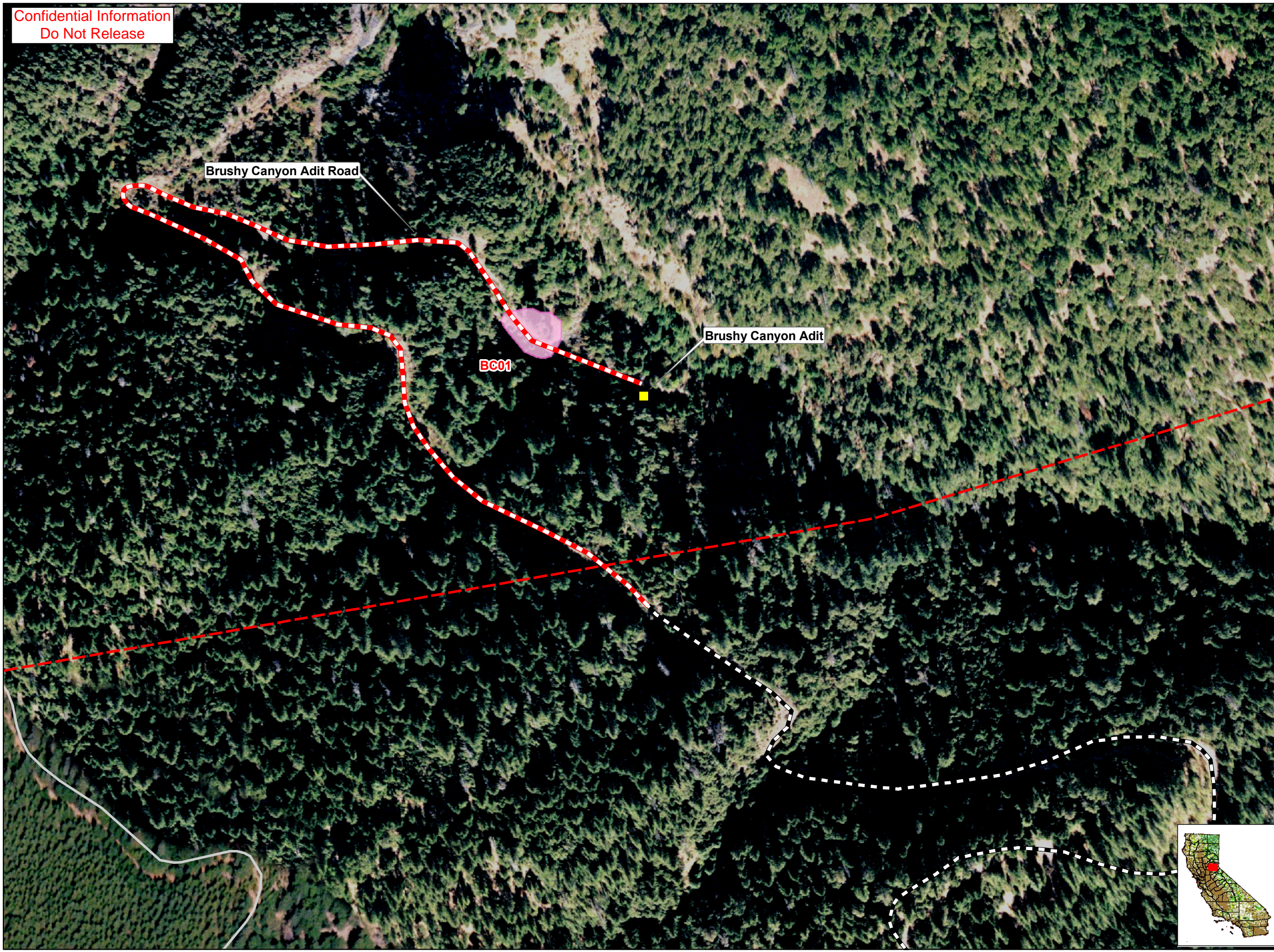
**Location of Special-Status Plant Populations in the Vicinity of the MFP**



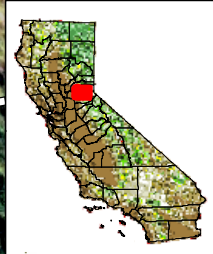
Projection: CA State Plane, Zone 2  
Datum: NAD 83


Date: 2/15/11

Confidential Information  
Do Not Release


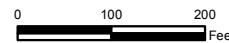


- PCWA Facilities and Features**
- Dam
  - Ancillary and Other Facilities
  - Powerhouse
  - Gage
  - Penstock
  - Tunnel
  - Pipeline
  - Access Point
- Project Power and Communication Lines:**
- Communication
  - Power
  - Power (underground)
  - Communication/Power
  - Communication/Power (underground)
- Transportation**
- Non-Project General Access Road
  - Project Road
  - Project Trail
  - Recreation Access Road
  - Recreation Water Supply Facility Access Road or Trail
  - Other Road
- Project Recreation Facilities**
- Picnic Area
  - Boat Ramp
  - Scenic Viewpoint
  - Developed Campground
  - Water Supply Line
- Other Facilities**
- PG & E Transmission Lines:
- 230 kV
  - 60 kV
- Special-status Plants**
- Stebbins' phacelia population



  
Placer County Water Agency  
Middle Fork American River Project

**BA/BE Map 6a**  
**Location of Stebbins' Phacelia at MFP Facilities and Features and Recreation Facilities and Features**  
**Brushy Canyon Area**

Projection: Ca. Stateplane, Zone 2  
Datum: NAD 83  
Date: 2/15/11

Confidential Information  
Do Not Release



- PCWA Facilities and Features**
- Dam
  - Ancillary and Other Facilities
  - Powerhouse
  - Gage
  - Penstock
  - Tunnel
  - Pipeline
  - Access Point
- Project Power and Communication Lines:**
- Communication
  - Power
  - Power (underground)
  - Communication/Power
  - Communication/Power (underground)
- Transportation**
- Non-Project General Access Road
  - Project Road
  - Project Trail
  - Recreation Access Road
  - Recreation Water Supply Facility Access Road or Trail
  - Other Road
- Project Recreation Facilities**
- Picnic Area
  - Boat Ramp
  - Scenic Viewpoint
  - Developed Campground
  - Water Supply Line
- Other Facilities**
- PG & E Transmission Lines:
- 230 kV
  - 60 kV
- Special-status Plants**
- Stebbins' phacelia population



**PCWA**  
Placer County Water Agency  
Middle Fork American River Project

**BA/BE Map 6b**  
**Location of Stebbins' Phacelia at MFP Facilities and Features and Recreation Facilities and Features**  
**Ellicott Bridge Area**

Projection: Ca. Stateplane, Zone 2  
Datum: NAD 83  
Date: 2/15/11

Confidential Information  
Do Not Release



**PCWA Facilities and Features**

- Dam
- Ancillary and Other Facilities
- Powerhouse
- Gage
- Penstock
- Tunnel
- Pipeline
- Access Point

**Project Power and Communication Lines:**

- Communication
- Power
- Power (underground)
- Communication/Power
- Communication/Power (underground)

**Transportation**

- Non-Project General Access Road
- Project Road
- Project Trail
- Recreation Access Road
- Recreation Water Supply Facility Access Road or Trail
- Other Road

**Project Recreation Facilities**

- Picnic Area
- Boat Ramp
- Scenic Viewpoint
- Developed Campground
- Water Supply Line

**Other Facilities**

- PG & E Transmission Lines:
- 230 kV
  - 60 kV

**Special-status Plants**

- Stebbins' phacelia population

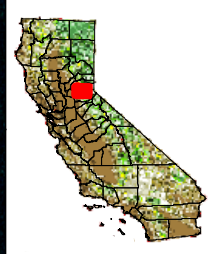


Placer County Water Agency  
Middle Fork American River Project

BA/BE Map 6c

Location of Stebbins' Phacelia  
at MFP Facilities and Features  
and Recreation Facilities and Features

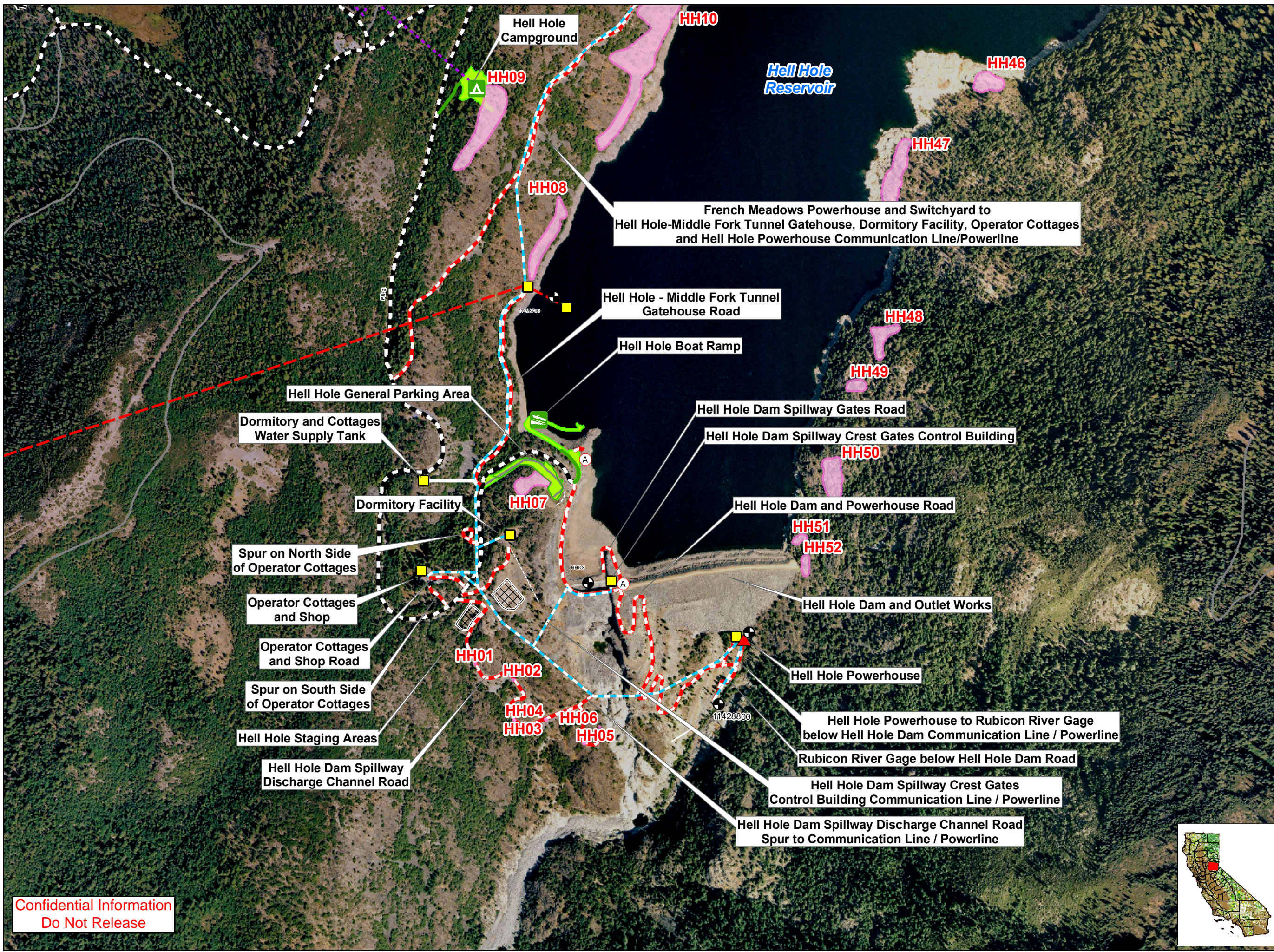
French Meadows Area



0 125 250 Feet

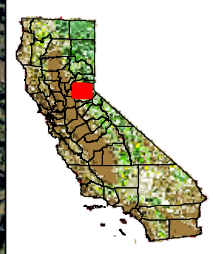
Projection: Ca. Stateplane, Zone 2  
Datum: NAD 83

Date: 2/9/11



- PCWA Facilities and Features**
- Dam
  - Ancillary and Other Facilities
  - Powerhouse
  - Gage
  - Penstock
  - Tunnel
  - Pipeline
  - Access Point
- Project Power and Communication Lines:**
- Communication
  - Power
  - Power (underground)
  - Communication/Power
  - Communication/Power (underground)
- Transportation**
- Non-Project General Access Road
  - Project Road
  - Project Trail
  - Recreation Access Road
  - Recreation Water Supply Facility Access Road or Trail
  - Other Road
- Project Recreation Facilities**
- Picnic Area
  - Boat Ramp
  - Scenic Viewpoint
  - Developed Campground
  - Water Supply Line
- Other Facilities**
- PG & E Transmission Lines:
- 230 kV
  - 60 kV
- Special-status Plants**
- Stebbins' phacelia population

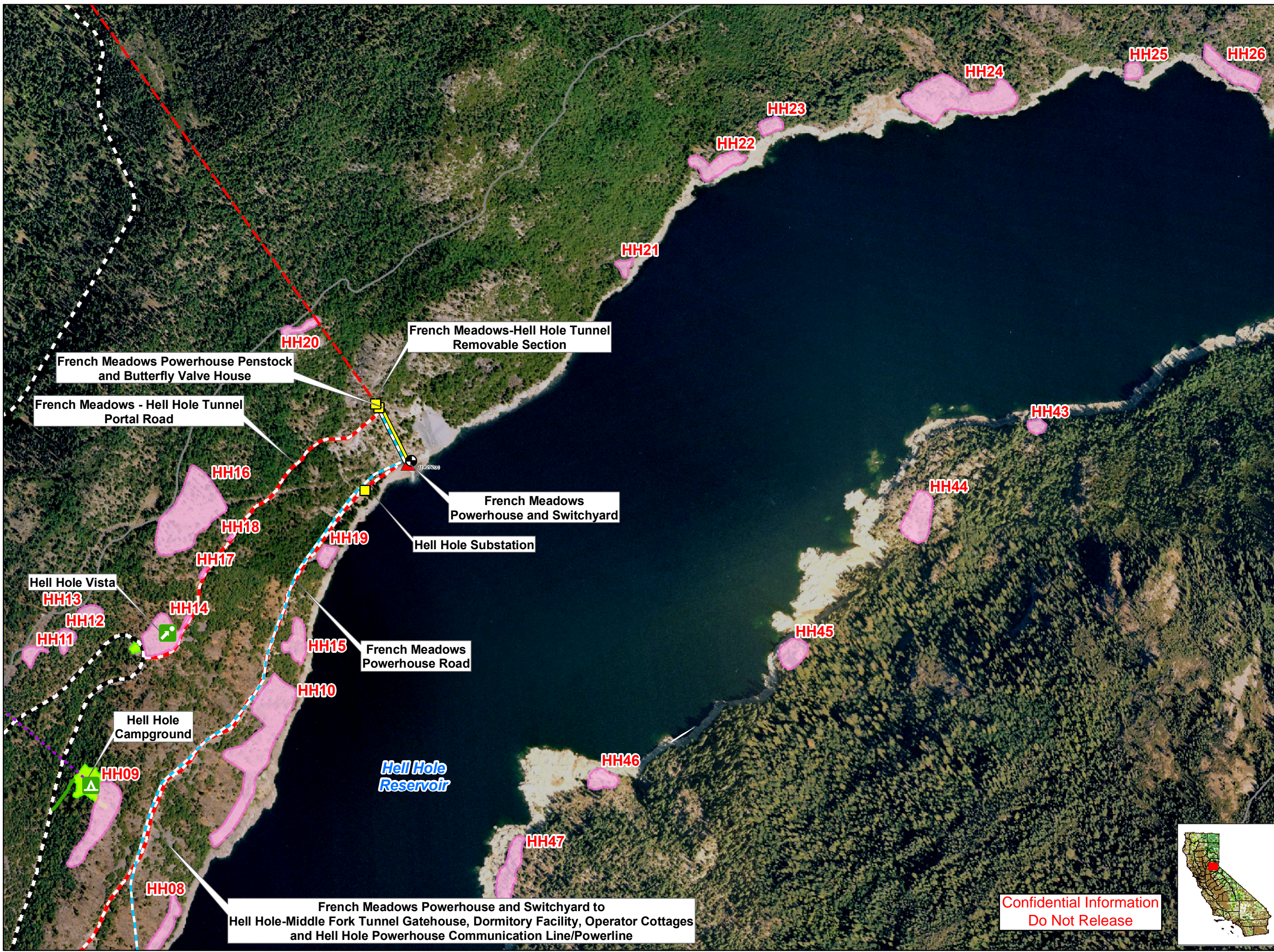
Confidential Information  
Do Not Release



**PCWA**  
Placer County Water Agency  
Middle Fork American River Project

**BA/BE Map 6d**  
Location of Stebbins' Phacelia  
at MFP Facilities and Features  
and Recreation Facilities and Features  
Lower Hell Hole Area

0 250 500 Feet  
Projection: Ca. Stateplane, Zone 2  
Datum: NAD 83  
Date: 2/15/11



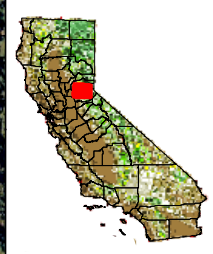
- PCWA Facilities and Features**
- Dam
  - Ancillary and Other Facilities
  - Powerhouse
  - Gage
  - Penstock
  - Tunnel
  - Pipeline
  - Access Point
- Project Power and Communication Lines:**
- Communication
  - Power
  - Power (underground)
  - Communication/Power
  - Communication/Power (underground)
- Transportation**
- Non-Project General Access Road
  - Project Road
  - Project Trail
  - Recreation Access Road
  - Recreation Water Supply Facility Access Road or Trail
  - Other Road
- Project Recreation Facilities**
- Picnic Area
  - Boat Ramp
  - Scenic Viewpoint
  - Developed Campground
  - Water Supply Line
- Other Facilities**
- PG & E Transmission Lines:
- 230 kV
  - 60 kV
- Special-status Plants**
- Stebbins' phacelia population

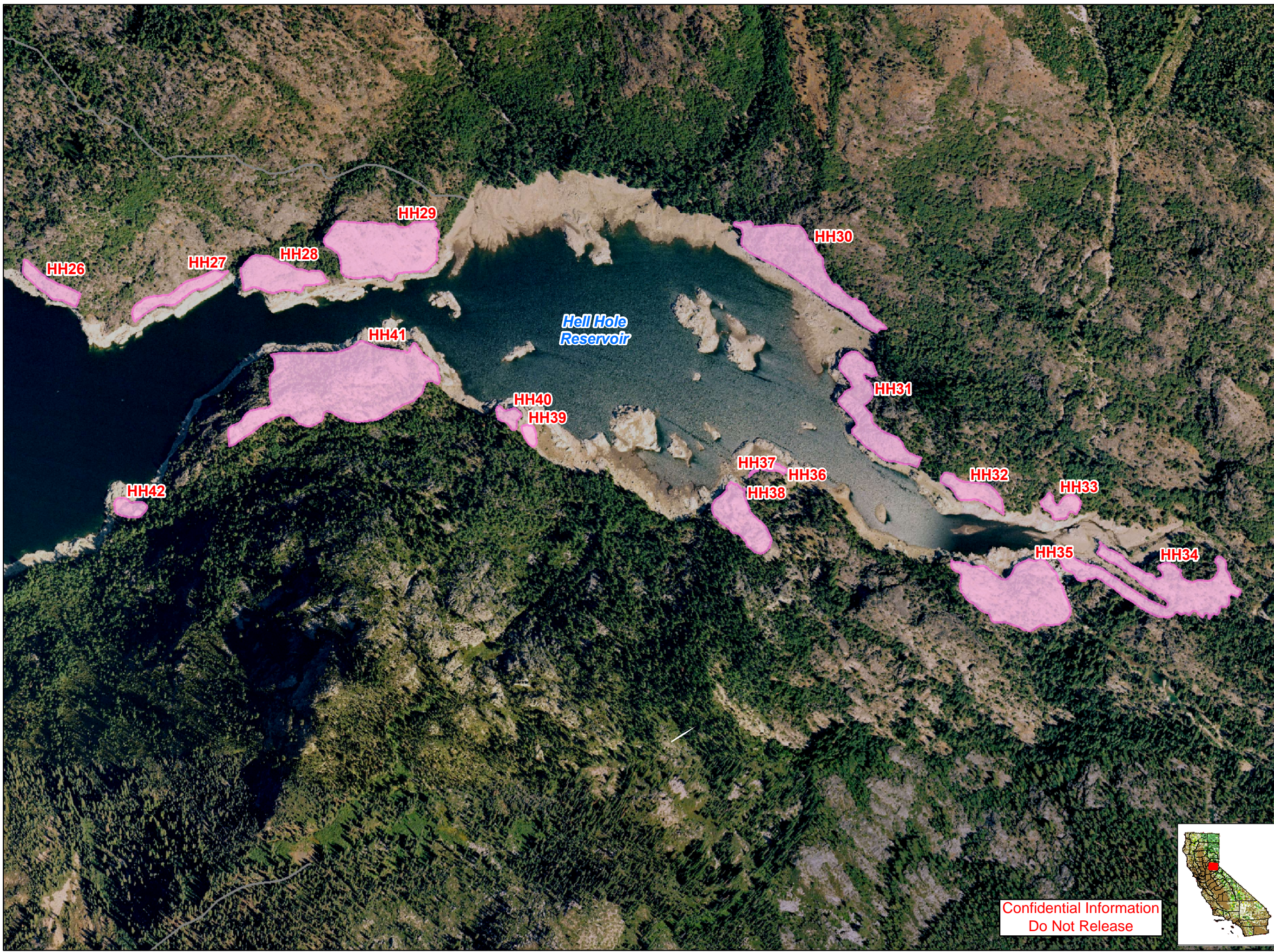
**PCWA**  
Placer County Water Agency  
Middle Fork American River Project

**BA/BE Map 6e**  
**Location of Stebbins' Phacelia at MFP Facilities and Features and Recreation Facilities and Features**  
**Middle Hell Hole Area**

0 250 500 Feet  
Projection: Ca. Stateplane, Zone 2  
Datum: NAD 83  
Date: 2/15/11

**Confidential Information  
Do Not Release**





**PCWA Facilities and Features**

- Dam
- Ancillary and Other Facilities
- Powerhouse
- Gage
- Penstock
- Tunnel
- Pipeline
- Access Point

**Project Power and Communication Lines:**

- Communication
- Power
- Power (underground)
- Communication/Power
- Communication/Power (underground)

**Transportation**

- Non-Project General Access Road
- Project Road
- Project Trail
- Recreation Access Road
- Recreation Water Supply Facility Access Road or Trail
- Other Road

**Project Recreation Facilities**

- Picnic Area
- Boat Ramp
- Scenic Viewpoint
- Developed Campground
- Water Supply Line

**Other Facilities**

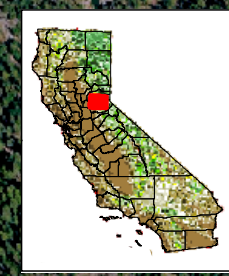
PG & E Transmission Lines:


- 230 kV
- 60 kV

**Special-status Plants**

- Stebbins' phacelia population
- Stebbins' phacelia population

**Confidential Information  
Do Not Release**






Placer County Water Agency  
Middle Fork American River Project

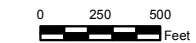
**BA/BE Map 6f**

**Location of Stebbins' Phacelia  
at MFP Facilities and Features  
and Recreation Facilities and Features**

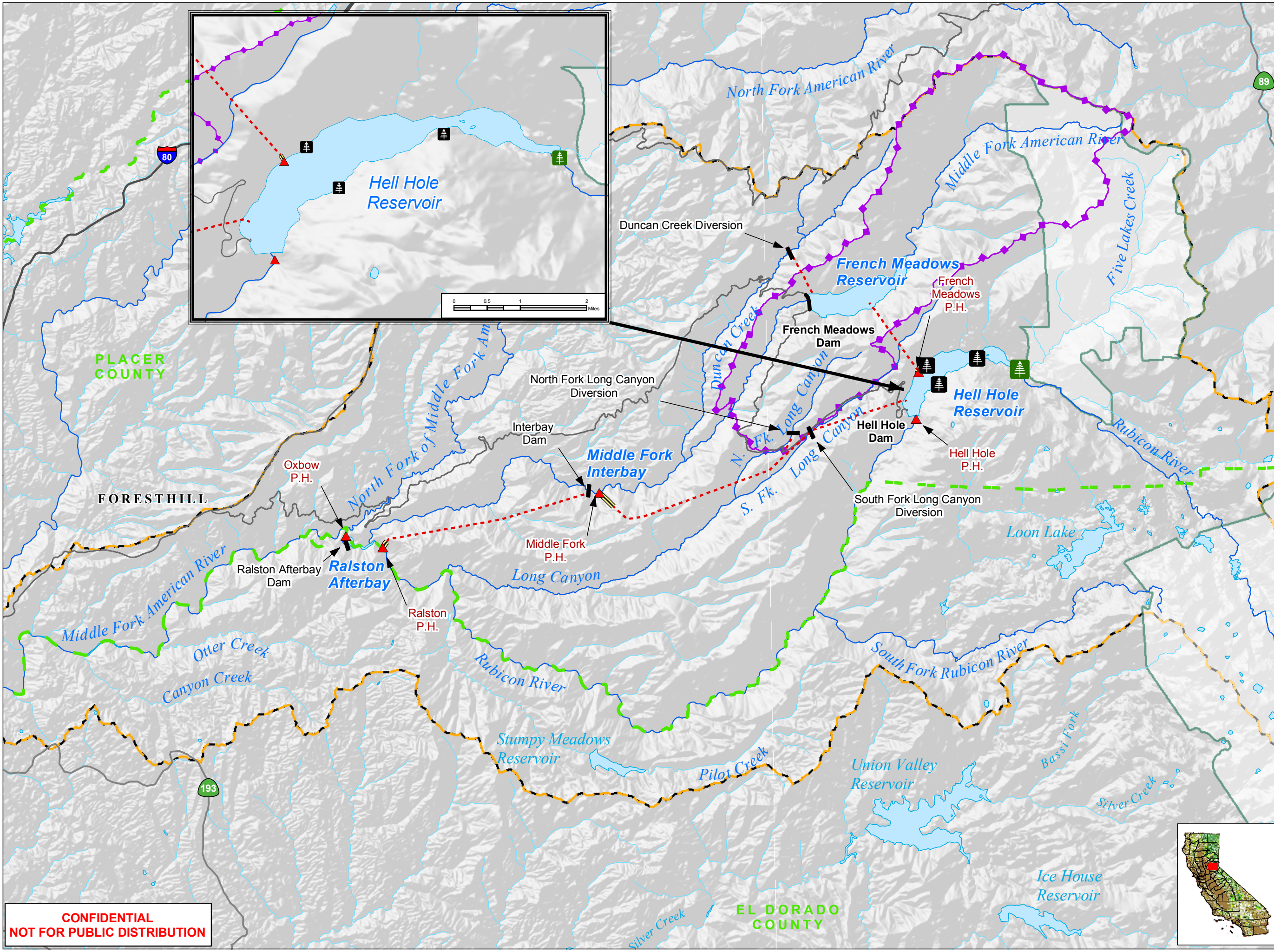
**Upper Hell Hole Area**



Date: 2/15/11



Projection: Ca. Stateplane, Zone 2  
Datum: NAD 83



**Project Facilities**

- ▲ Powerhouse
- Dam
- - - Tunnel
- ══ Penstock

**Transportation**

- Major Road
- Minor Road

**Hydrography**

- Watercourse
- Water Body
- ▭ Middle Fork American River Watershed\*

\*Modified from Calwater Ver. 2.2 to represent drainage above high-water mark of Folsom Lake

**Designated Boundary**

- - - County Boundary
- ▭ Wilderness Area
- ▭ State Game Refuge

**Bald Eagle Data**

PCWA Bald Eagle Surveys (2007-2008):

- Night Roost
- Nest

**PCWA**  
Placer County Water Agency  
Middle Fork American River Project

**BA/BE Map 14**

**Bald Eagle Nests and Night Roosts in the Vicinity of the MFP**

0 1 2 3 Miles  
Projection: CA State Plane, Zone 2  
Datum: NAD 83  
Date: 2/15/11

**CONFIDENTIAL**  
**NOT FOR PUBLIC DISTRIBUTION**