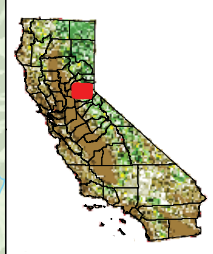


- Project Facilities**
- ▲ Powerhouse
 - Dam
 - - - Tunnel
 - ==== Penstock
- Transportation**
- Major Road
 - Minor Road
- Hydrography**
- Watercourse
 - Water Body
- Designated Boundary**
- - - County Boundary
 - Wilderness Area
 - Middle Fork American River Watershed*

*Modified from Calwater Ver. 2.2 to represent drainage above high-water mark of Folsom Lake



Placer County Water Agency
 Middle Fork American River Project
 Map CUL 1-1
**Middle Fork American River
 Project and Vicinity**



0 1 2 3 4 5
 Miles

Projection: CA State Plane, Zone 2
 Datum: NAD 83

Date: 3/28/08

PCWA Facilities and Features

- Dam
- Ancillary and Other Facilities
- Powerhouse
- Gage
- Penstock
- Tunnel
- Pipeline
- Gate
- Access Point
- Public Safety Fence
- FERC Boundary
- Water Supply Line (above ground)
- Water Supply Line (buried)
- Project Power and Communication Lines:**
- Communication
- Power
- Power (underground)
- Communication/Power
- Communication/Power (underground)

Archaeological Survey Coverage

- Areas Surveyed 2006
- Areas Surveyed 2007
- Areas Surveyed 2008

Transportation

- Non-Project General Access Road
- Project Road
- Project Trail
- Recreation Access Road
- Recreation Water Supply Facility Access Road or Trail
- Other Road

Project Recreation Facilities

- Picnic Area
- Boat Ramp
- Scenic Viewpoint
- Developed Campground
- Recreation Facility Footprints

Other Facilities

PG & E Transmission Lines:

- 230 kV
- 60 kV

Potential Betterments Features*

- Construction Staging or Work Areas
- Temporary Road Associated with Potential Project Betterments
- Permanent Road Associated with Potential Project Betterments

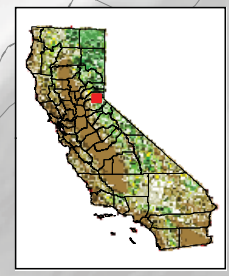
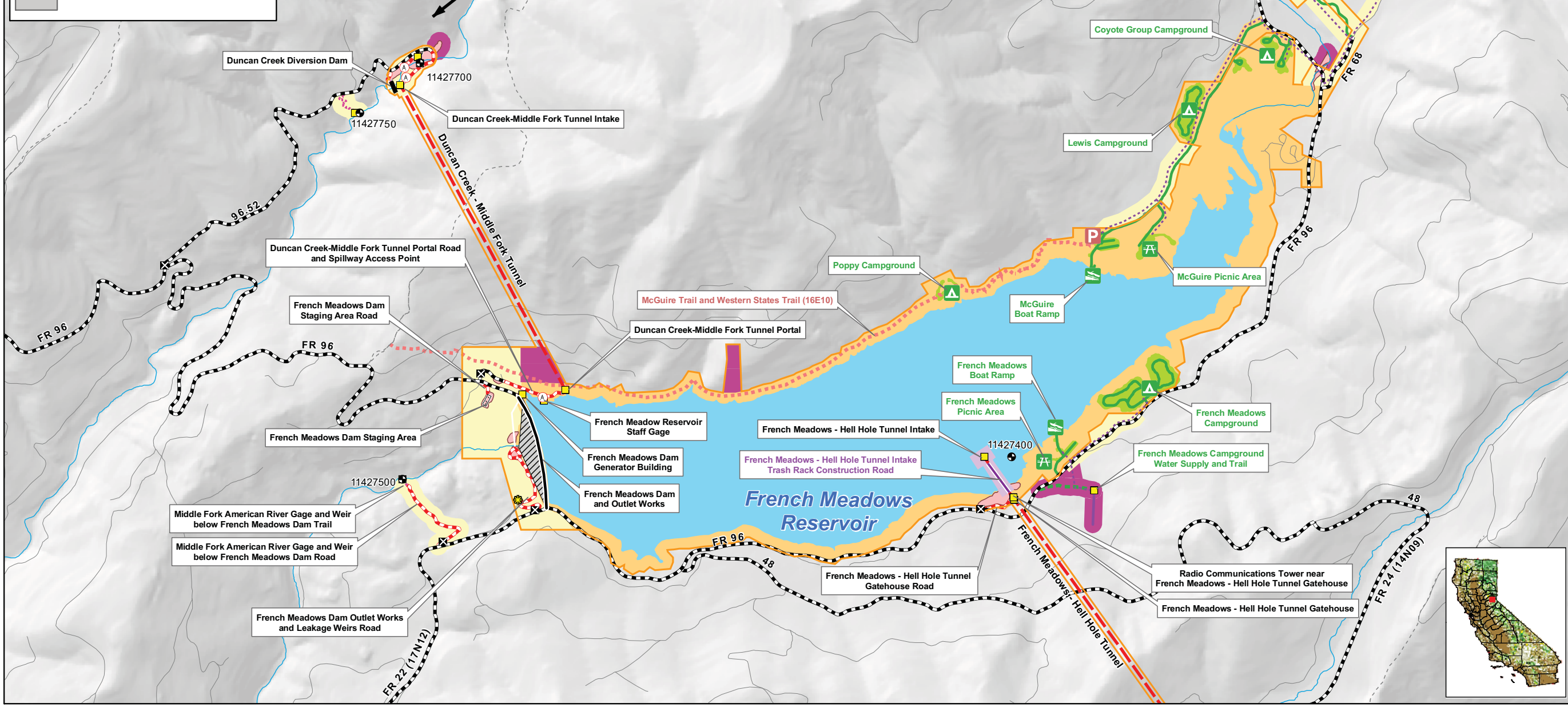
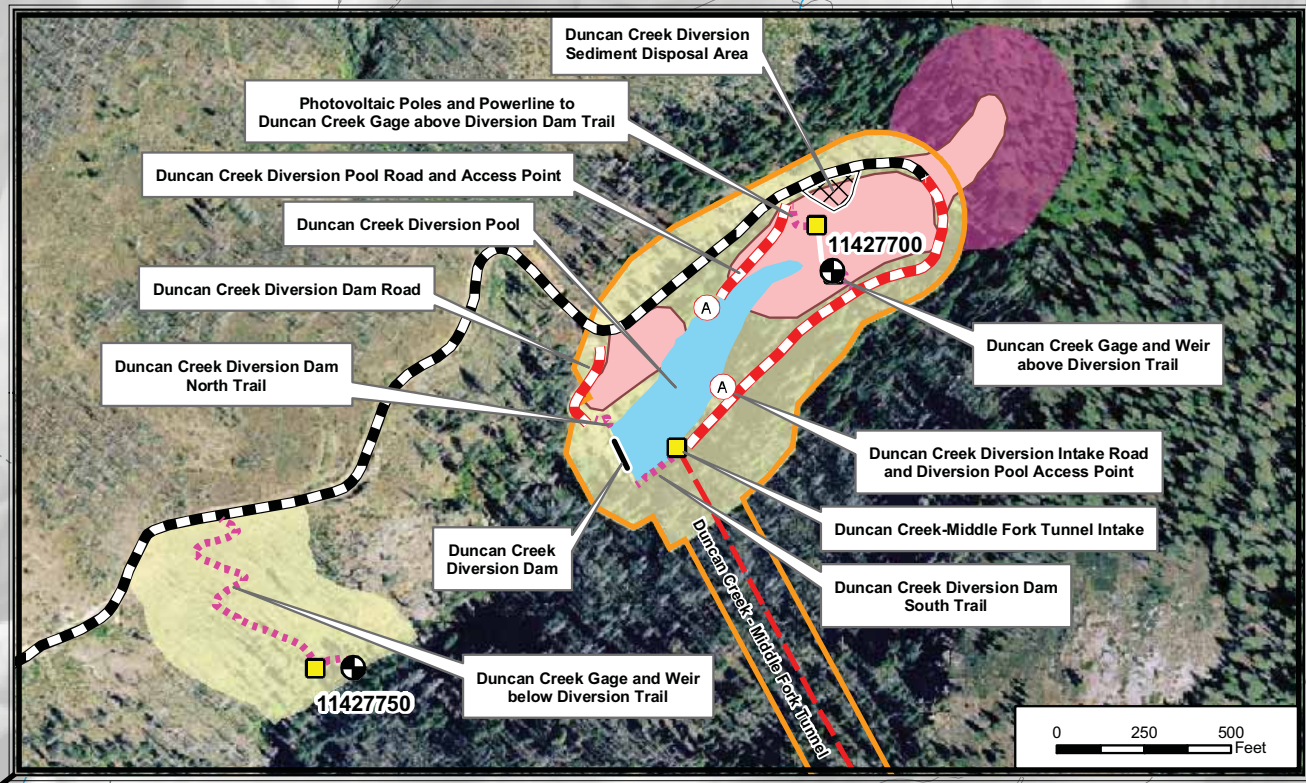
* The proposed Project betterments are currently under review. The final configuration will be provided to the stakeholders and included in the Final Technical Study Plans

Designated Boundary

- Special Area

Facilities and Dispersed Recreation Areas Identified by Stakeholders

- Recreation Access OHV Road
- Recreation Access Trail
- Trailhead
- Dispersed Concentrated Use Area
- Parking Area



Placer County Water Agency
Middle Fork American River Project
Map CUL 1-2
Areas Surveyed for Cultural Resources in 2006, 2007 and 2008
Sheet 1 of 6
Duncan Creek, French Meadows Area

0 0.25 0.5 Miles
Projection: Ca. Stateplane, Zone 2
Datum: NAD 83
Date: 3/23/09

PCWA Facilities and Features

- Dam
- Ancillary and Other Facilities
- Powerhouse
- Gage
- Penstock
- Tunnel
- Pipeline
- Gate
- Access Point
- Public Safety Fence
- FERC Boundary
- Water Supply Line (above ground)
- Water Supply Line (buried)
- Project Power and Communication Lines:
 - Communication
 - Power
 - Power (underground)
 - Communication/Power
 - Communication/Power (underground)

Archaeological Survey Coverage

- Areas Surveyed 2006
- Areas Surveyed 2007
- Areas Surveyed 2008

Transportation

- Non-Project General Access Road
- Project Road
- Project Trail
- Recreation Access Road
- Recreation Water Supply Facility Access Road or Trail
- Other Road

Project Recreation Facilities

- Picnic Area
- Boat Ramp
- Scenic Viewpoint
- Developed Campground
- Recreation Facility Footprints

Other Facilities

PG & E Transmission Lines:

- 230 kV
- 60 kV

Potential Betterments Features*

- Construction Staging or Work Areas
- Temporary Road Associated with Potential Project Betterments
- Permanent Road Associated with Potential Project Betterments

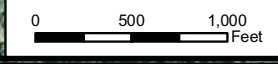
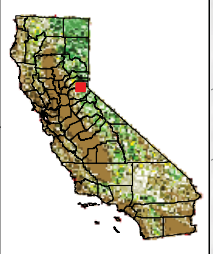
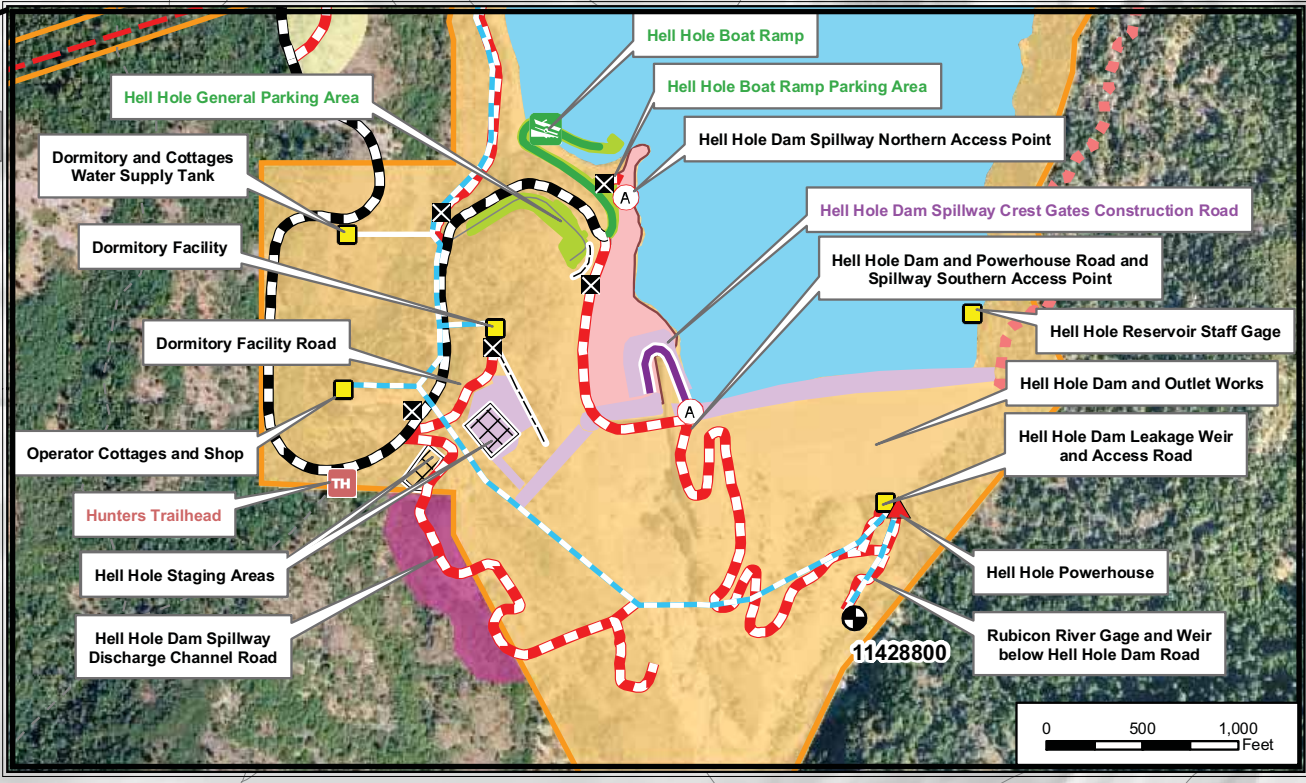
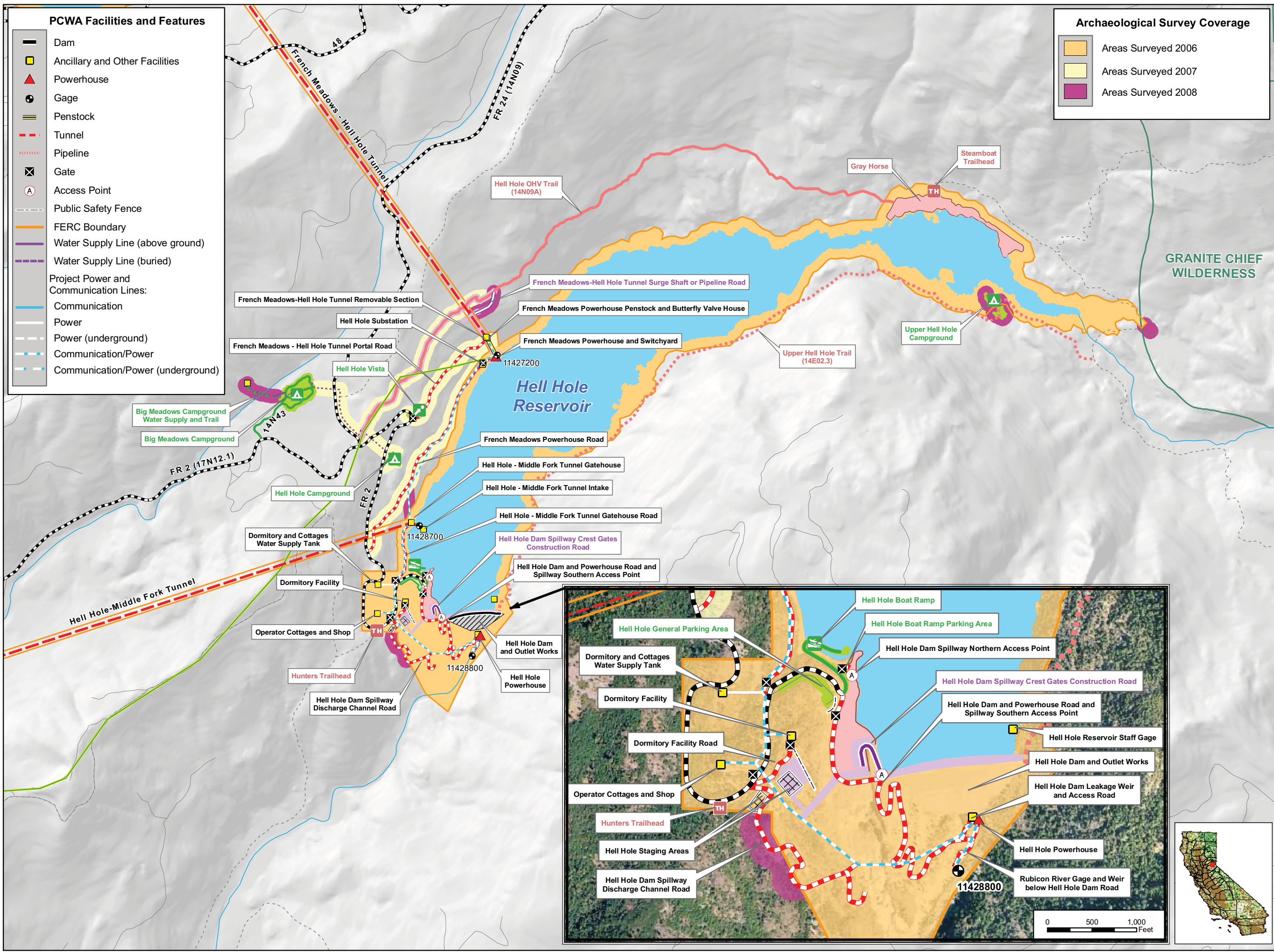
* The proposed Project betterments are currently under review. The final configuration will be provided to the stakeholders and included in the Final Technical Study Plans

Designated Boundary

- Special Area

Facilities and Dispersed Recreation Areas Identified by Stakeholders

- Recreation Access OHV Road
- Recreation Access Trail
- Trailhead
- Dispersed Concentrated Use Area
- Parking Area



Placer County Water Agency
Middle Fork American River Project
Map CUL 1-2
Areas Surveyed for Cultural Resources in 2006, 2007, and 2008
Sheet 2 of 6
Hell Hole Area

0 0.25 0.5 Miles
Projection: Ca. Stateplane, Zone 2
Datum: NAD 83
Date: 3/23/09

- ### PCWA Facilities and Features
- Dam
 - Ancillary and Other Facilities
 - Powerhouse
 - Gage
 - Penstock
 - Tunnel
 - Pipeline
 - Gate
 - Access Point
 - Public Safety Fence
 - FERC Boundary
 - Water Supply Line (above ground)
 - Water Supply Line (buried)
 - Project Power and Communication Lines:**
 - Communication
 - Power
 - Power (underground)
 - Communication/Power
 - Communication/Power (underground)

- ### Archaeological Survey Coverage
- Areas Surveyed 2006
 - Areas Surveyed 2007
 - Areas Surveyed 2008

- ### Transportation
- Non-Project General Access Road
 - Project Road
 - Project Trail
 - Recreation Access Road
 - Recreation Water Supply Facility Access Road or Trail
 - Other Road

- ### Project Recreation Facilities
- Picnic Area
 - Boat Ramp
 - Scenic Viewpoint
 - Developed Campground
 - Recreation Facility Footprints

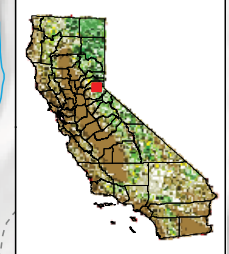
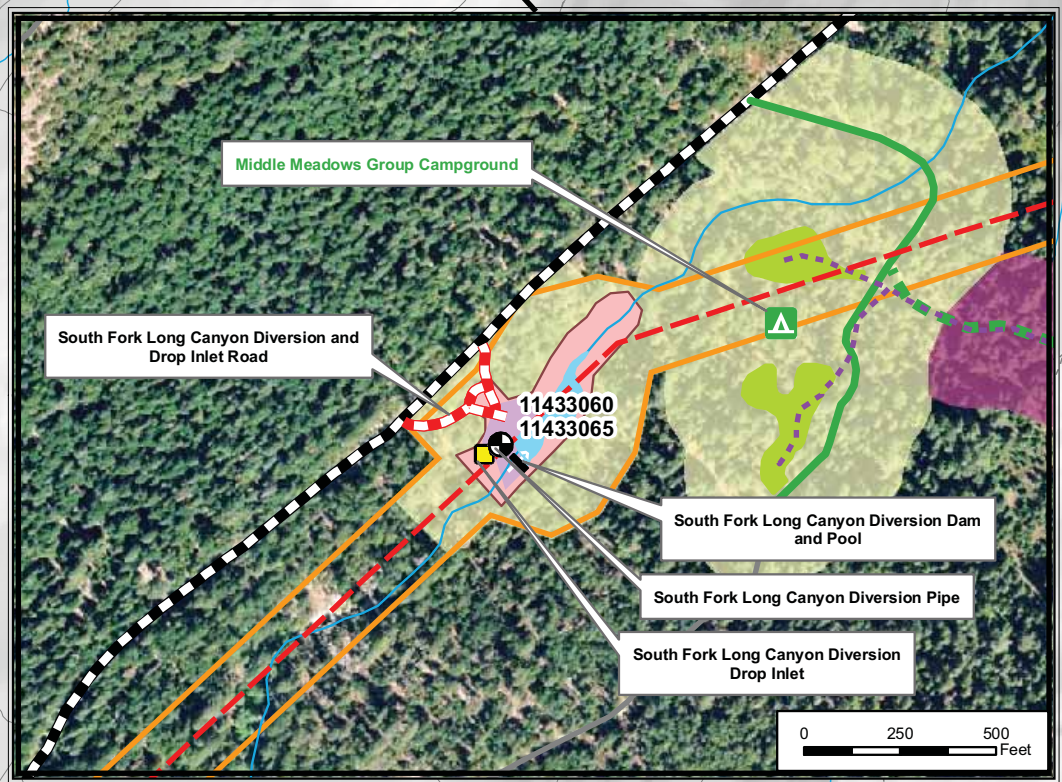
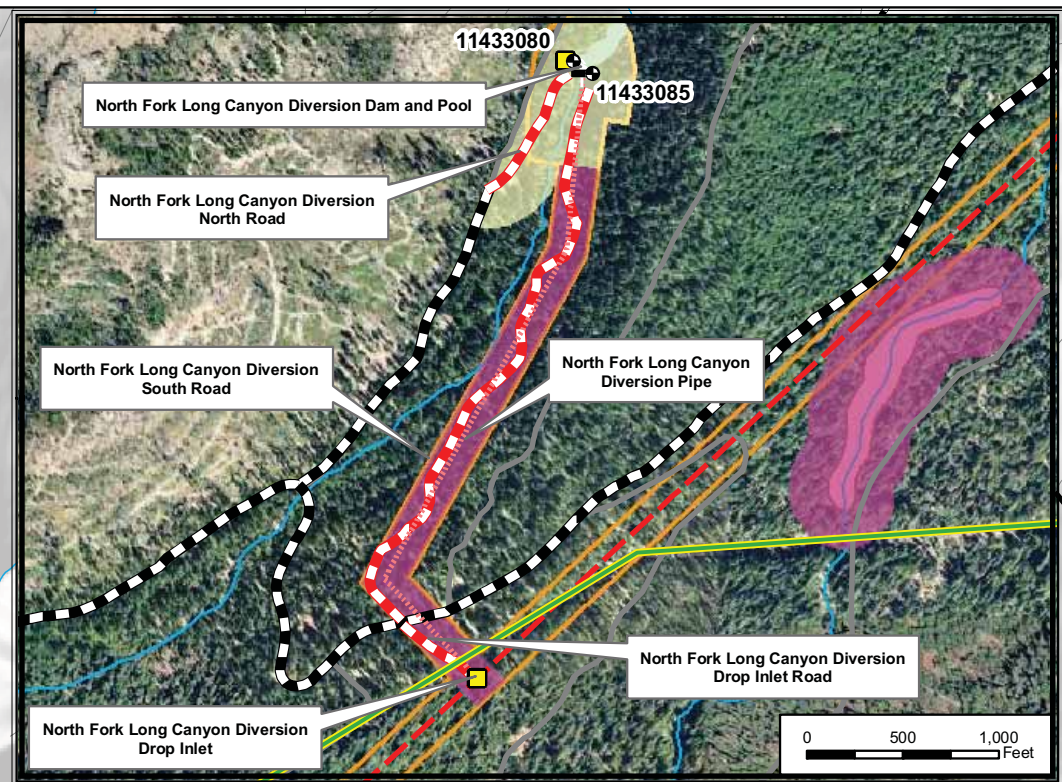
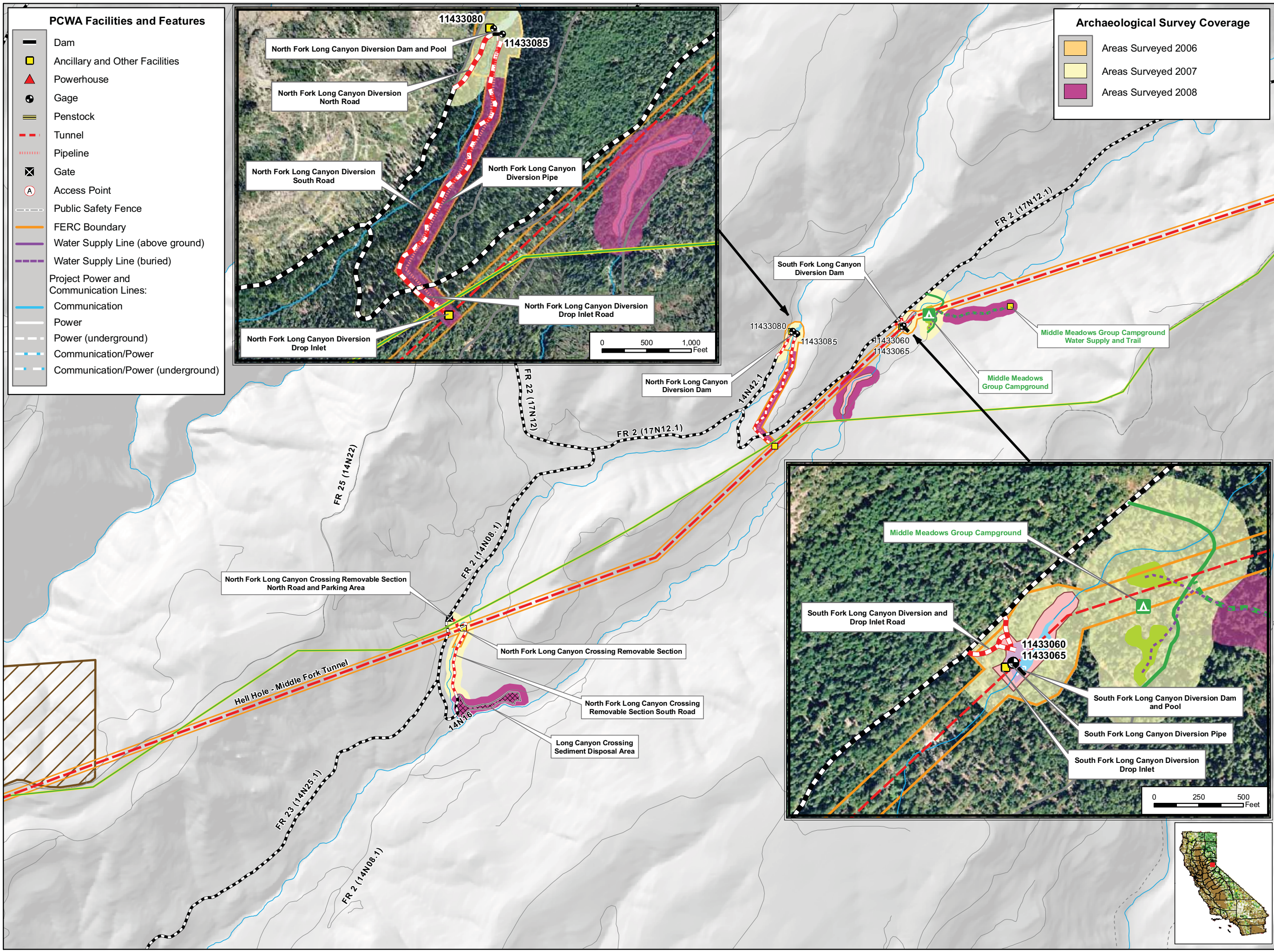
- ### Other Facilities
- PG & E Transmission Lines:
- 230 kV
 - 60 kV


- ### Potential Betterments Features*
- Construction Staging or Work Areas
 - Temporary Road Associated with Potential Project Betterments
 - Permanent Road Associated with Potential Project Betterments

* The proposed Project betterments are currently under review. The final configuration will be provided to the stakeholders and included in the Final Technical Study Plans


- ### Designated Boundary
- Special Area

- ### Facilities and Dispersed Recreation Areas Identified by Stakeholders
- Recreation Access OHV Road
 - Recreation Access Trail
 - Trailhead
 - Dispersed Concentrated Use Area
 - Parking Area

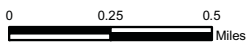




Placer County Water Agency
Middle Fork American River Project
Map CUL 1-2
Areas Surveyed for Cultural Resources in 2006, 2007 and 2008
Sheet 3 of 6
Long Canyon Area

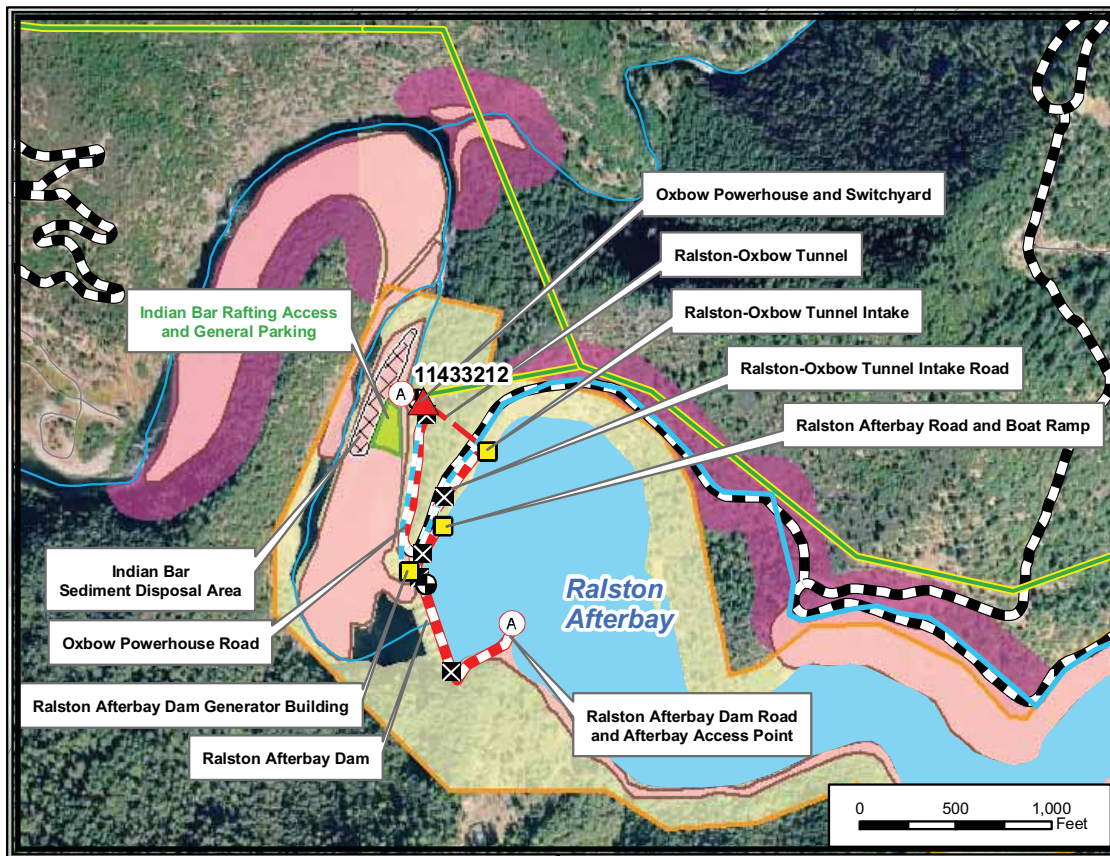


Date: 3/23/09



0 0.25 0.5 Miles

Projection: Ca. Stateplane, Zone 2
Datum: NAD 83



PCWA Facilities and Features

- Dam
- Ancillary and Other Facilities
- Powerhouse
- Gage
- Penstock
- Tunnel
- Pipeline
- Gate
- Access Point
- Public Safety Fence
- FERC Boundary
- Water Supply Line (above ground)
- Water Supply Line (buried)
- Project Power and Communication Lines:
 - Communication
 - Power
 - Power (underground)
 - Communication/Power
 - Communication/Power (underground)

Transportation

- Non-Project General Access Road
- Project Road
- Project Trail
- Recreation Access Road
- Recreation Water Supply Facility Access Road or Trail
- Other Road

Project Recreation Facilities

- Picnic Area
- Boat Ramp
- Scenic Viewpoint
- Developed Campground
- Recreation Facility Footprints

Other Facilities

PG & E Transmission Lines:

- 230 kV
- 60 kV

Potential Betterments Features*

- Construction Staging or Work Areas
- Temporary Road Associated with Potential Project Betterments
- Permanent Road Associated with Potential Project Betterments

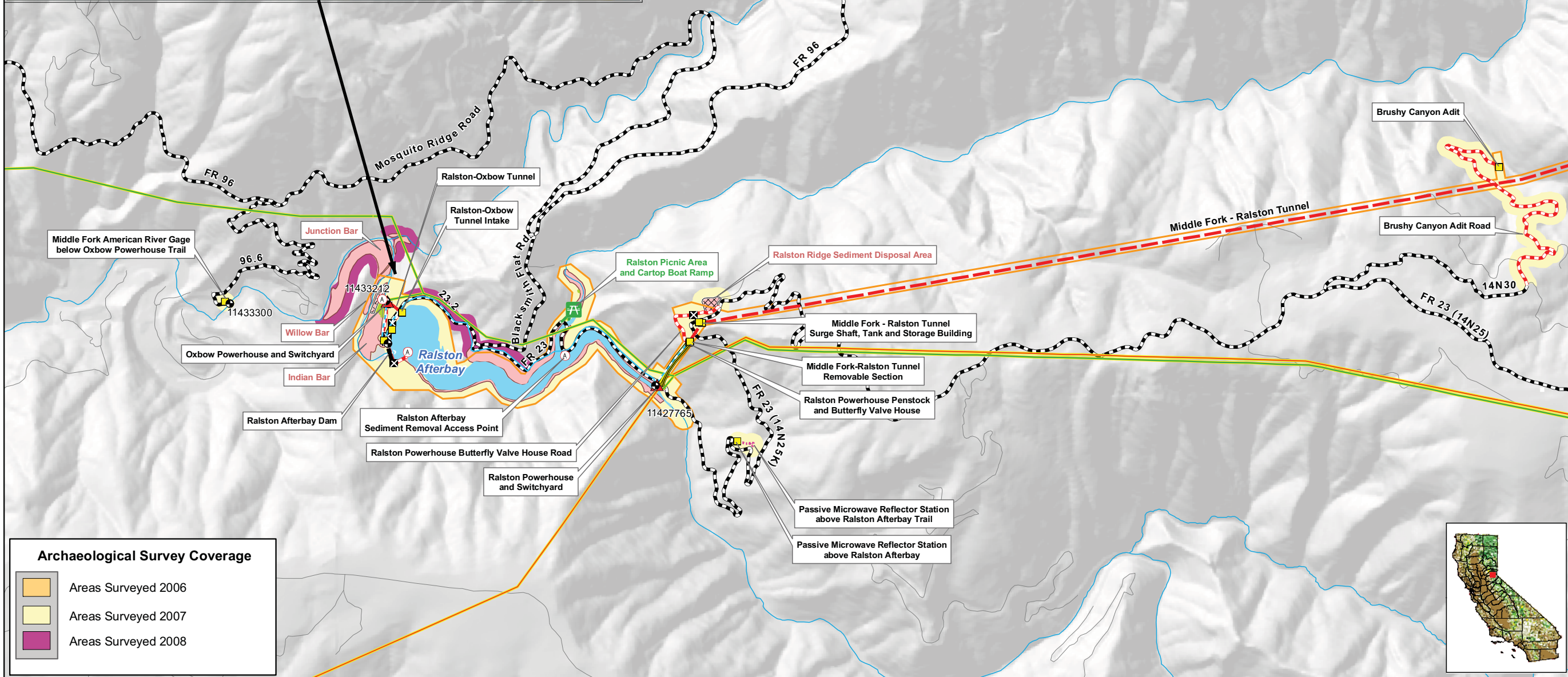
* The proposed Project betterments are currently under review. The final configuration will be provided to the stakeholders and included in the Final Technical Study Plans

Designated Boundary

- Special Area

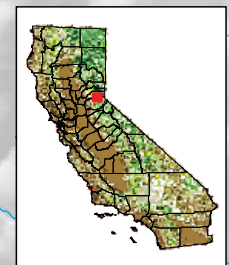
Facilities and Dispersed Recreation Areas Identified by Stakeholders

- Recreation Access OHV Road
- Recreation Access Trail
- Trailhead
- Dispersed Concentrated Use Area
- Parking Area



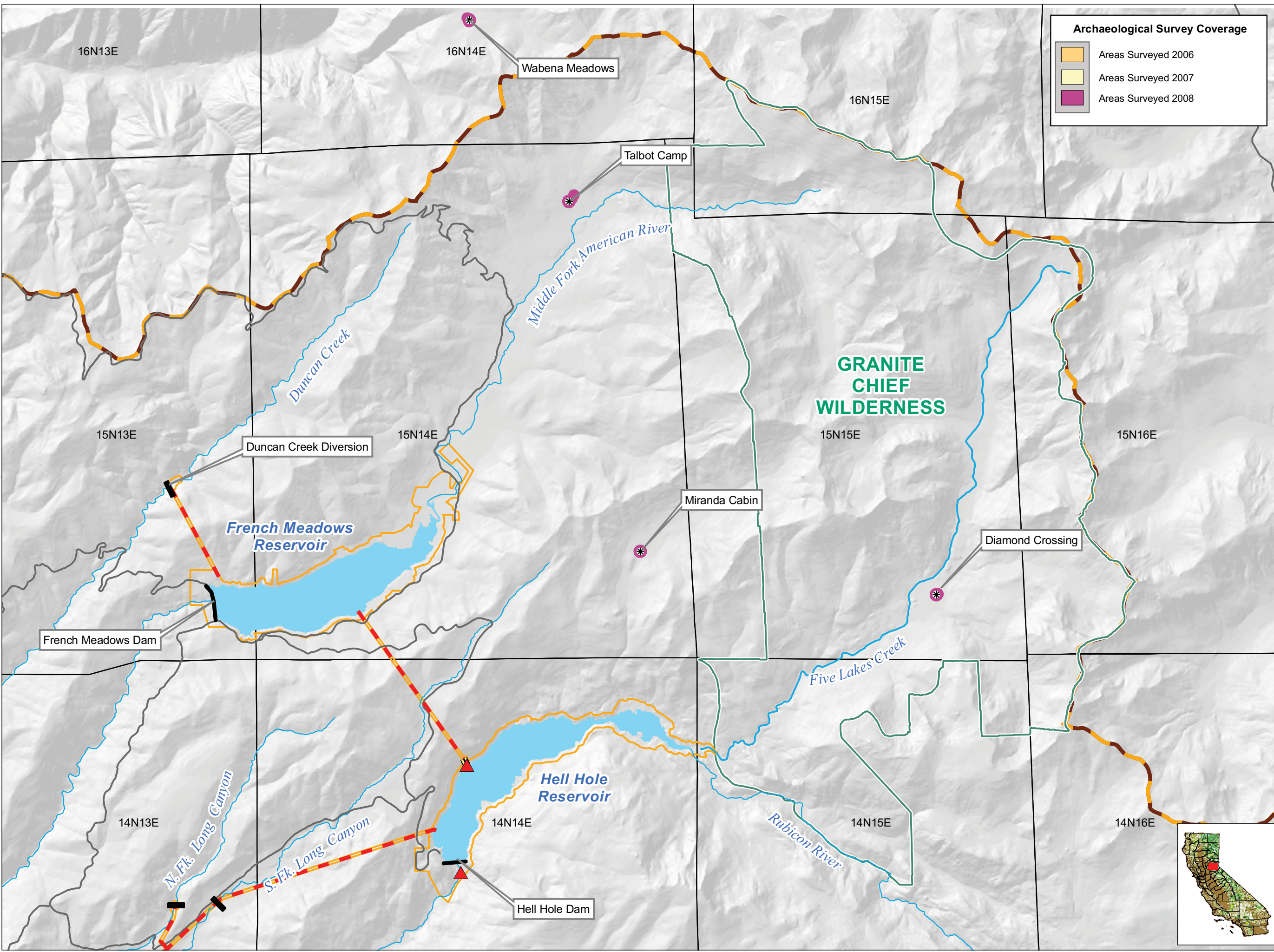
Archaeological Survey Coverage

- Areas Surveyed 2006
- Areas Surveyed 2007
- Areas Surveyed 2008



Placer County Water Agency
 Middle Fork American River Project
Map CUL 1-2
 Areas Surveyed for Cultural Resources in 2006, 2007 and 2008
 Sheet 5 of 6
 Ralston, Oxbow Area

Scale: 0, 0.25, 0.5 Miles
 Projection: Ca. Stateplane, Zone 2
 Datum: NAD 83
 Date: 3/23/09



Archaeological Survey Coverage

- Areas Surveyed 2006
- Areas Surveyed 2007
- Areas Surveyed 2008

Project Facilities

- Powerhouse
- Dam
- Snow Course Location
- Tunnel
- Penstock
- FERC Boundary

Transportation

- Roads

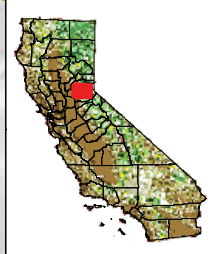
Hydrography

- Watercourse
- Water Body
- Middle Fork American River Watershed*

*Modified from Calwater Ver. 2.2 to represent drainage above high-water mark of Folsom Lake

Designated Boundary

- Wilderness Area



PCWA

Placer County Water Agency
Middle Fork American River Project

Map CUL 1-2
Areas Surveyed for Cultural Resources in 2006, 2007 and 2008
Sheet 6 of 6
Project Snow Courses

Date: 3/23/09

Projection: CA State Plane, Zone 2
Datum: NAD 83

PCWA Facilities and Features

- Dam
- Ancillary and Other Facilities
- Powerhouse
- Gage
- Penstock
- Tunnel
- Pipeline
- Gate
- Access Point
- Public Safety Fence
- FERC Boundary
- Water Supply Line (above ground)
- Water Supply Line (buried)
- Project Power and Communication Lines:
 - Communication
 - Power
 - Power (underground)
 - Communication/Power
 - Communication/Power (underground)

Land Jurisdictions / Ownership*

- Eldorado National Forest
- Tahoe National Forest
- PCWA
- Lone Star Timber
- Sierra Pacific Industries**
- Other Private (Blank)

** Includes former properties of R.H. Emmerson & Son, LLC

* PARCEL DATA SOURCES: Placer County, July 2006, El Dorado County, February 2007, USFS Region 5, February 2009. Some data has been modified to account for known errors and is to be used for general planning purposes only.

Transportation

- Non-Project General Access Road
- Project Road
- Project Trail
- Recreation Access Road
- Recreation Water Supply Facility Access Road or Trail
- Other Road

Project Recreation Facilities

- Picnic Area
- Boat Ramp
- Scenic Viewpoint
- Developed Campground
- Recreation Facility Footprints

Other Facilities

PG & E Transmission Lines:

- 230 kV
- 60 kV

Potential Betterments Features*

- Construction Staging or Work Areas
- Temporary Road Associated with Potential Project Betterments
- Permanent Road Associated with Potential Project Betterments

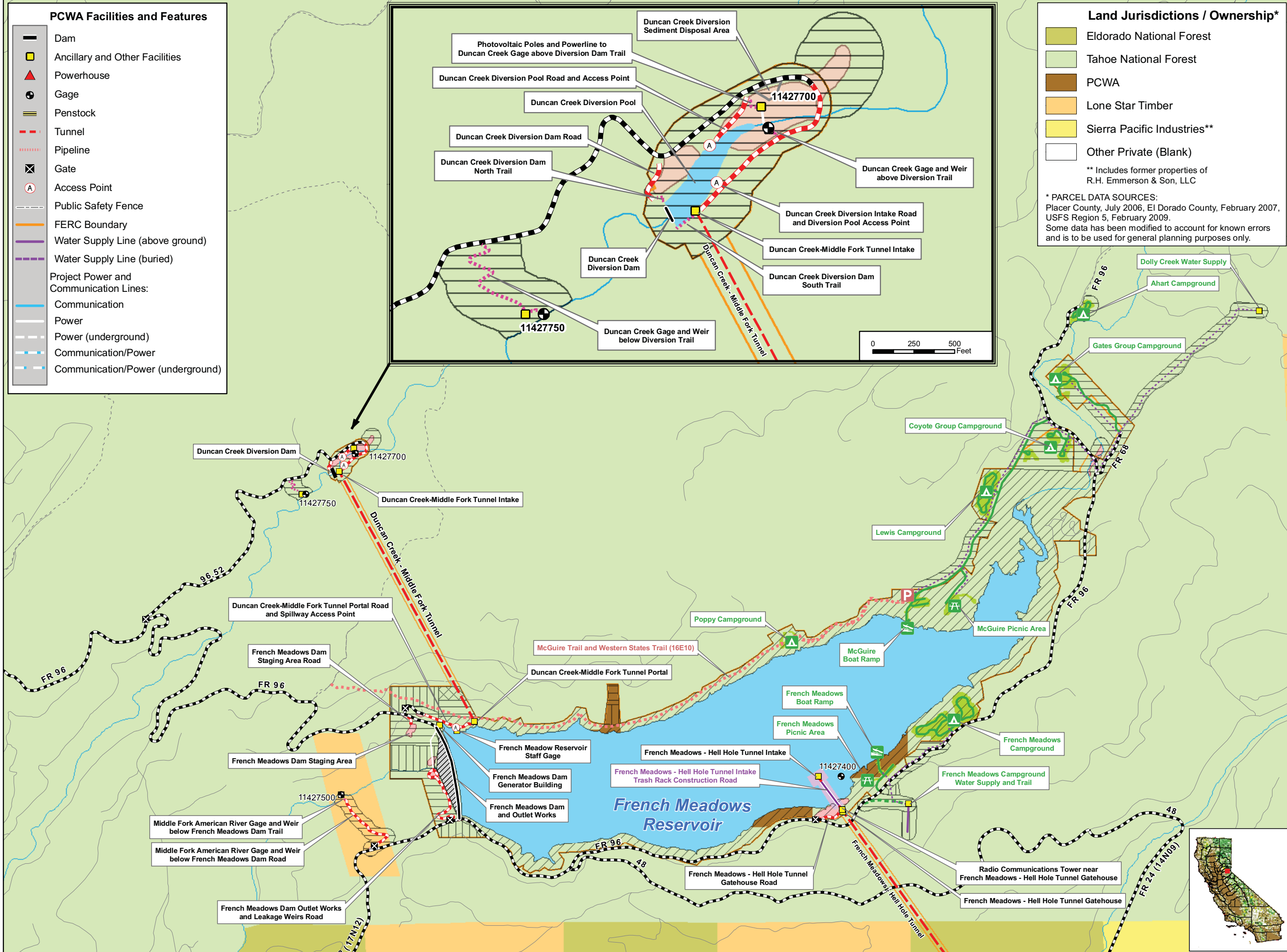
* The proposed Project betterments are currently under review. The final configuration will be provided to the stakeholders and included in the Final Technical Study Plans

Facilities and Dispersed Recreation Areas Identified by Stakeholders

- Recreation Access OHV Road
- Recreation Access Trail
- Trailhead
- Dispersed Concentrated Use Area
- Parking Area

Archaeological Survey Methods

- Visual Reconnaissance
- Pedestrian Survey - Complete
- Pedestrian Survey - General
- Inaccessible Area



Placer County Water Agency
Middle Fork American River Project

Map CUL 1-3
Cultural Resources Survey Area
Showing Survey Methods and Jurisdictions
Sheet 1 of 6
Duncan Creek, French Meadows Area

0 0.25 0.5 Miles
Projection: Ca. Stateplane, Zone 2
Datum: NAD 83
Date: 3/23/09

PCWA Facilities and Features

- Dam
- Ancillary and Other Facilities
- Powerhouse
- Gage
- Penstock
- Tunnel
- Pipeline
- Gate
- Access Point
- Public Safety Fence
- FERC Boundary
- Water Supply Line (above ground)
- Water Supply Line (buried)
- Project Power and Communication Lines:
 - Communication
 - Power
 - Power (underground)
 - Communication/Power
 - Communication/Power (underground)

Land Jurisdictions / Ownership*

- Eldorado National Forest
- Tahoe National Forest
- PCWA
- Lone Star Timber
- Sierra Pacific Industries**
- Other Private (Blank)

** Includes former properties of R.H. Emmerson & Son, LLC

* PARCEL DATA SOURCES: Placer County, July 2006, El Dorado County, February 2007, USFS Region 5, February 2009. Some data has been modified to account for known errors and is to be used for general planning purposes only.

Transportation

- Non-Project General Access Road
- Project Road
- Project Trail
- Recreation Access Road
- Recreation Water Supply Facility Access Road or Trail
- Other Road

Project Recreation Facilities

- Picnic Area
- Boat Ramp
- Scenic Viewpoint
- Developed Campground
- Recreation Facility Footprints

Other Facilities

PG & E Transmission Lines:

- 230 kV
- 60 kV

Potential Betterments Features*

- Construction Staging or Work Areas
- Temporary Road Associated with Potential Project Betterments
- Permanent Road Associated with Potential Project Betterments

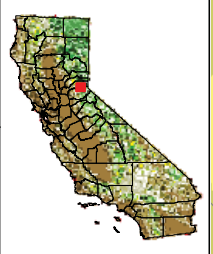
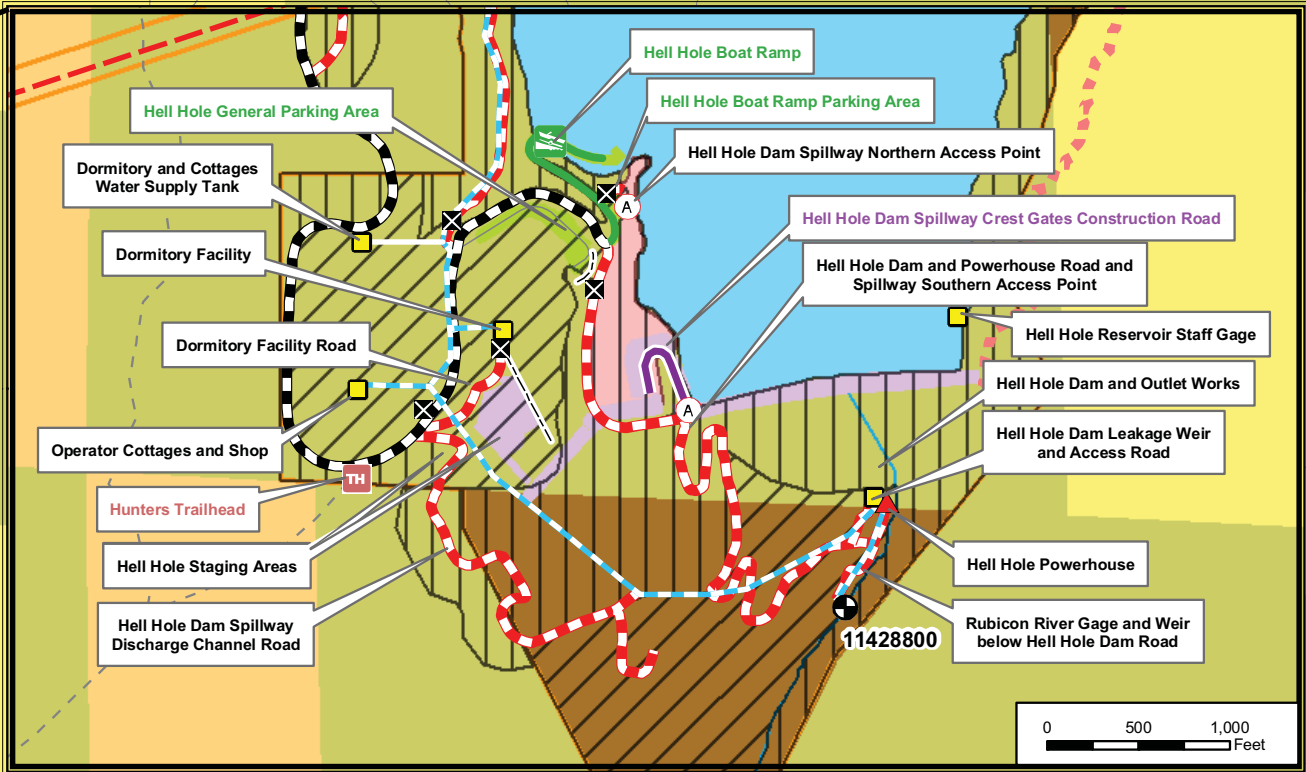
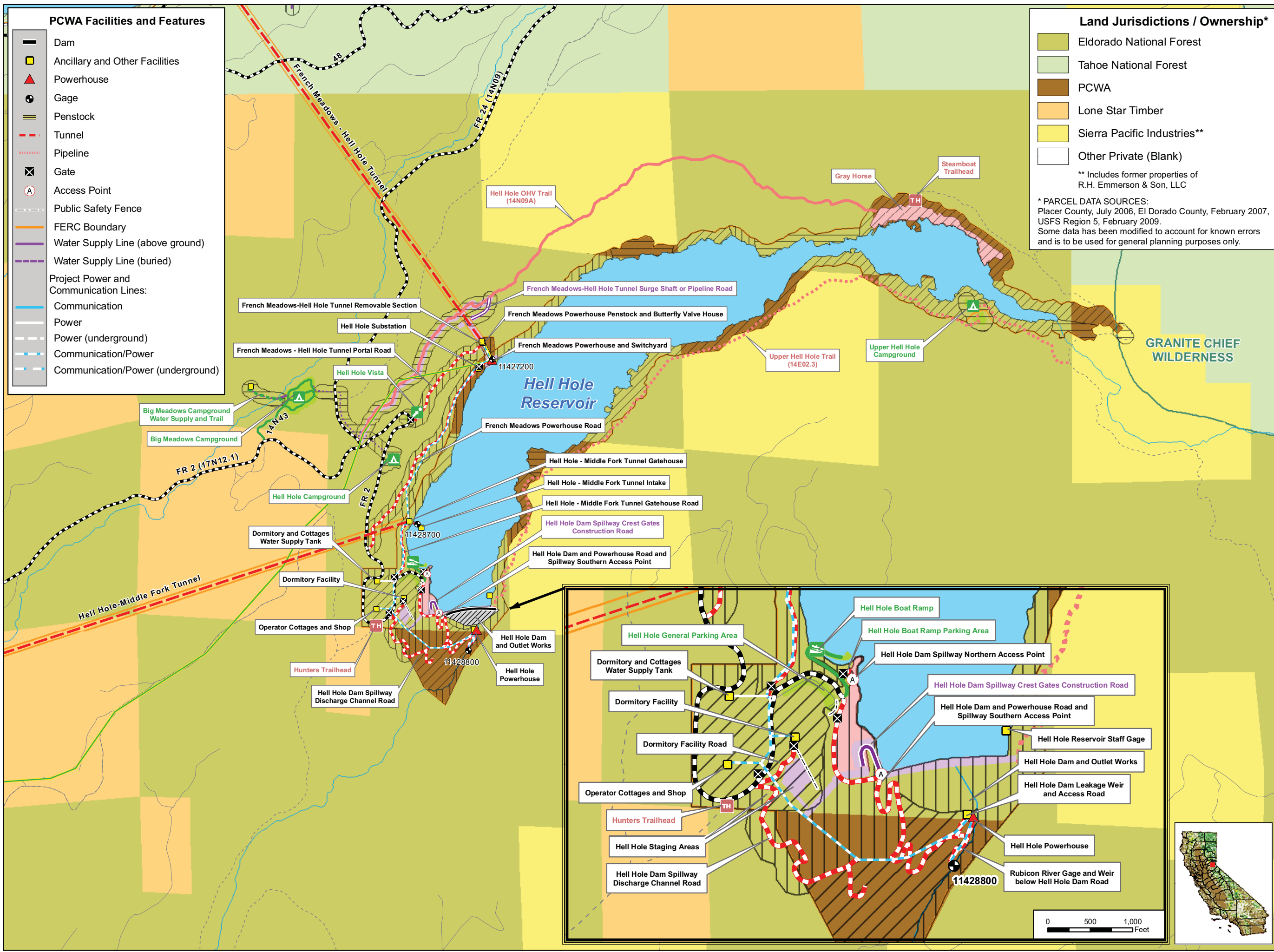
* The proposed Project betterments are currently under review. The final configuration will be provided to the stakeholders and included in the Final Technical Study Plans

Facilities and Dispersed Recreation Areas Identified by Stakeholders

- Recreation Access OHV Road
- Recreation Access Trail
- Trailhead
- Dispersed Concentrated Use Area
- Parking Area

Archaeological Survey Methods

- Visual Reconnaissance
- Pedestrian Survey - Complete
- Pedestrian Survey - General
- Inaccessible Area



Placer County Water Agency
Middle Fork American River Project
Map CUL 1-3
Cultural Resources Survey Area
Showing Survey Methods and Jurisdictions
Sheet 2 of 6
Hell Hole Area

0 0.25 0.5 Miles

Projection: Ca. Stateplane, Zone 2
Datum: NAD 83

Date: 3/23/09

- ### PCWA Facilities and Features
- Dam
 - Ancillary and Other Facilities
 - Powerhouse
 - Gage
 - Penstock
 - Tunnel
 - Pipeline
 - Gate
 - Access Point
 - Public Safety Fence
 - FERC Boundary
 - Water Supply Line (above ground)
 - Water Supply Line (buried)
 - Project Power and Communication Lines:**
 - Communication
 - Power
 - Power (underground)
 - Communication/Power
 - Communication/Power (underground)

- ### Land Jurisdictions / Ownership*
- Eldorado National Forest
 - Tahoe National Forest
 - PCWA
 - Lone Star Timber
 - Sierra Pacific Industries**
 - Other Private (Blank)
- ** Includes former properties of R.H. Emmerson & Son, LLC
- * PARCEL DATA SOURCES:
Placer County, July 2006, El Dorado County, February 2007, USFS Region 5, February 2009.
Some data has been modified to account for known errors and is to be used for general planning purposes only.

- ### Transportation
- Non-Project General Access Road
 - Project Road
 - Project Trail
 - Recreation Access Road
 - Recreation Water Supply Facility Access Road or Trail
 - Other Road

- ### Project Recreation Facilities
- Picnic Area
 - Boat Ramp
 - Scenic Viewpoint
 - Developed Campground
 - Recreation Facility Footprints

- ### Other Facilities
- PG & E Transmission Lines:
- 230 kV
 - 60 kV

- ### Potential Betterments Features*
- Construction Staging or Work Areas
 - Temporary Road Associated with Potential Project Betterments
 - Permanent Road Associated with Potential Project Betterments

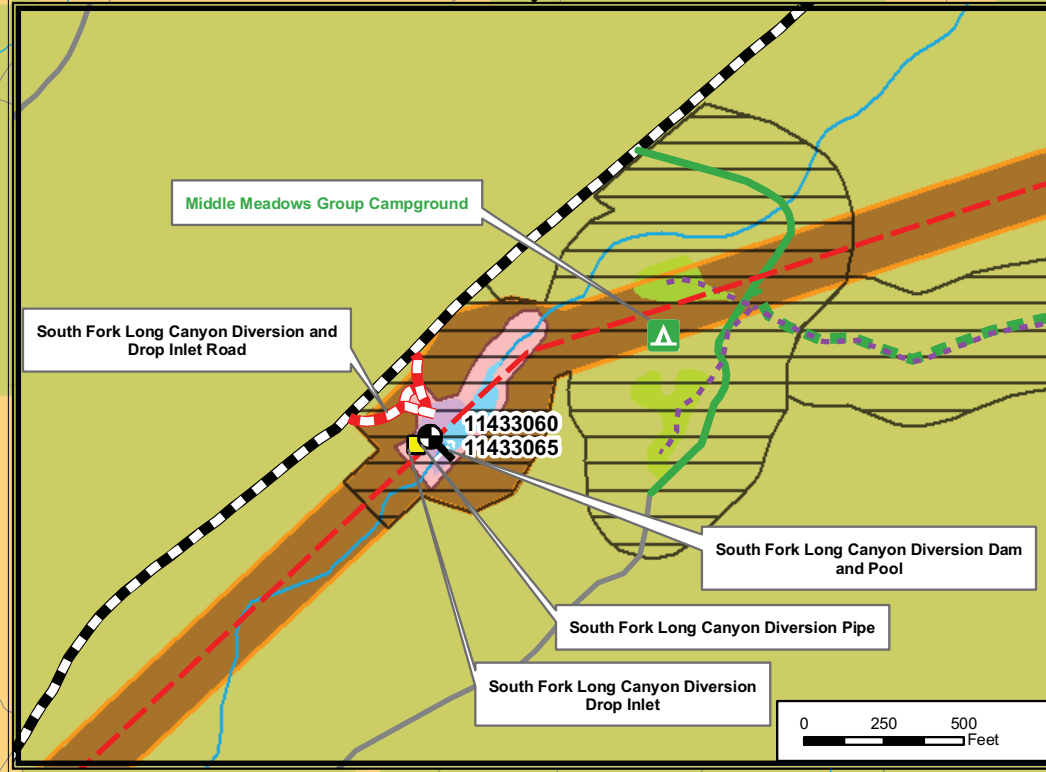
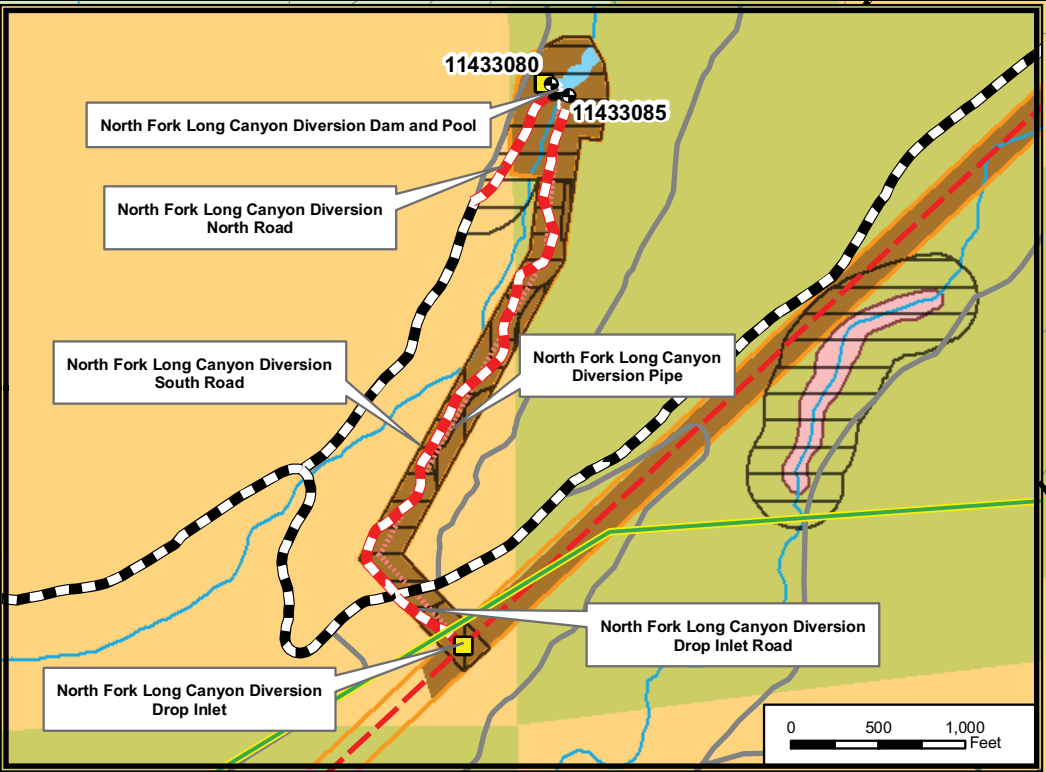
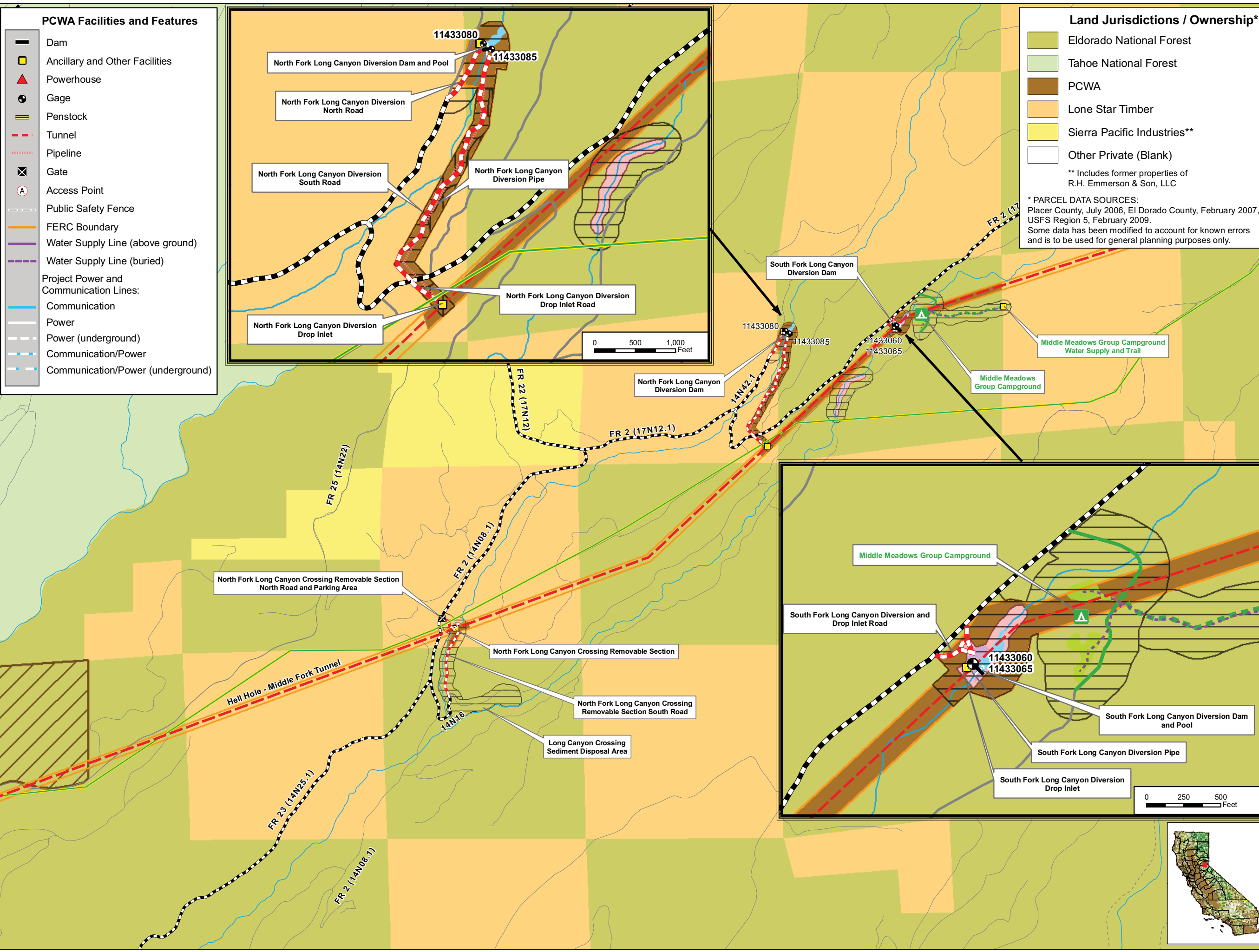
* The proposed Project betterments are currently under review. The final configuration will be provided to the stakeholders and included in the Final Technical Study Plans

Facilities and Dispersed Recreation Areas Identified by Stakeholders

- Recreation Access OHV Road
- Recreation Access Trail
- Trailhead
- Dispersed Concentrated Use Area
- Parking Area

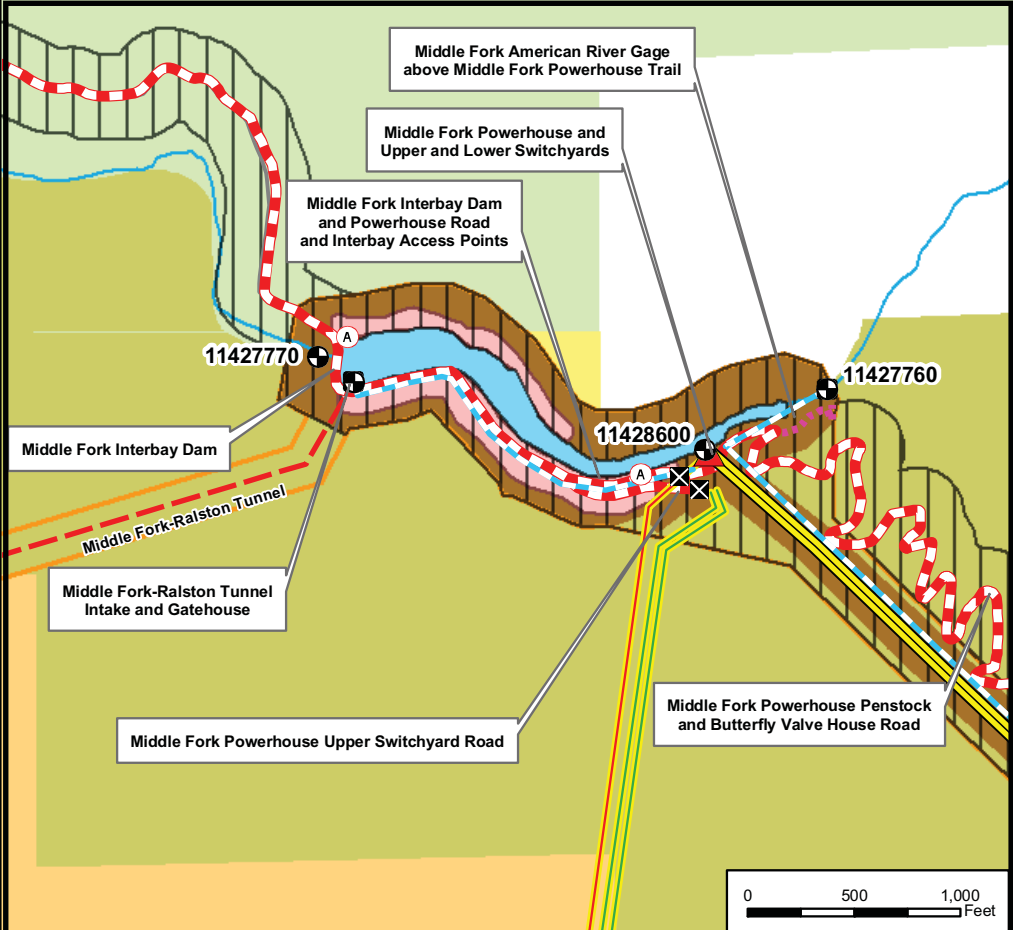
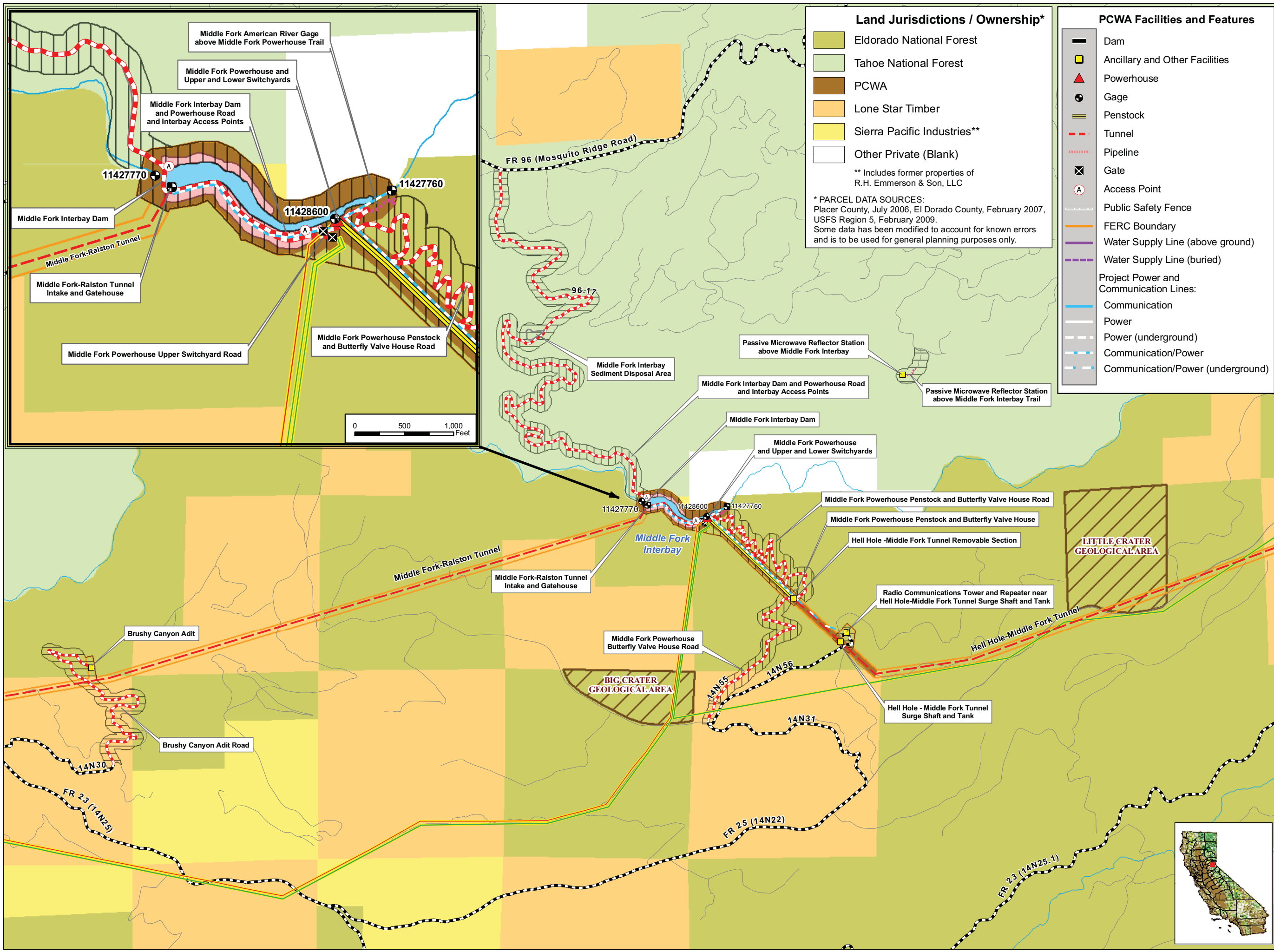
Archaeological Survey Methods

- Visual Reconnaissance
- Pedestrian Survey - Complete
- Pedestrian Survey - General
- Inaccessible Area



Placer County Water Agency
Middle Fork American River Project
Map CUL 1-3
Cultural Resources Survey Area
Showing Survey Methods and Jurisdictions
Sheet 3 of 6
Long Canyon Area

0 0.25 0.5 Miles
Projection: Ca. Stateplane, Zone 2
Datum: NAD 83
Date: 3/23/09



Land Jurisdictions / Ownership*

- Eldorado National Forest
- Tahoe National Forest
- PCWA
- Lone Star Timber
- Sierra Pacific Industries**
- Other Private (Blank)

** Includes former properties of R.H. Emmerson & Son, LLC

* PARCEL DATA SOURCES:
Placer County, July 2006, El Dorado County, February 2007, USFS Region 5, February 2009.
Some data has been modified to account for known errors and is to be used for general planning purposes only.

PCWA Facilities and Features

- Dam
- Ancillary and Other Facilities
- Powerhouse
- Gage
- Penstock
- Tunnel
- Pipeline
- X Gate
- A Access Point
- Public Safety Fence
- FERC Boundary
- Water Supply Line (above ground)
- Water Supply Line (buried)
- Project Power and Communication Lines:
- Communication
- Power
- Power (underground)
- Communication/Power
- Communication/Power (underground)

Transportation

- Non-Project General Access Road
- Project Road
- Project Trail
- Recreation Access Road
- Recreation Water Supply Facility Access Road or Trail
- Other Road

Project Recreation Facilities

- Picnic Area
- Boat Ramp
- Scenic Viewpoint
- Developed Campground
- Recreation Facility Footprints

Other Facilities

PG & E Transmission Lines:

- 230 kV
- 60 kV

Potential Betterments Features*

- Construction Staging or Work Areas
- Temporary Road Associated with Potential Project Betterments
- Permanent Road Associated with Potential Project Betterments


* The proposed Project betterments are currently under review. The final configuration will be provided to the stakeholders and included in the Final Technical Study Plans

Facilities and Dispersed Recreation Areas Identified by Stakeholders

- Recreation Access OHV Road
- Recreation Access Trail
- TH Trailhead
- Dispersed Concentrated Use Area
- P Parking Area

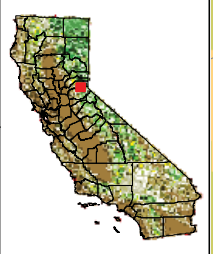
Archaeological Survey Methods

- Visual Reconnaissance
- Pedestrian Survey - Complete
- Pedestrian Survey - General
- Inaccessible Area



Placer County Water Agency
Middle Fork American River Project

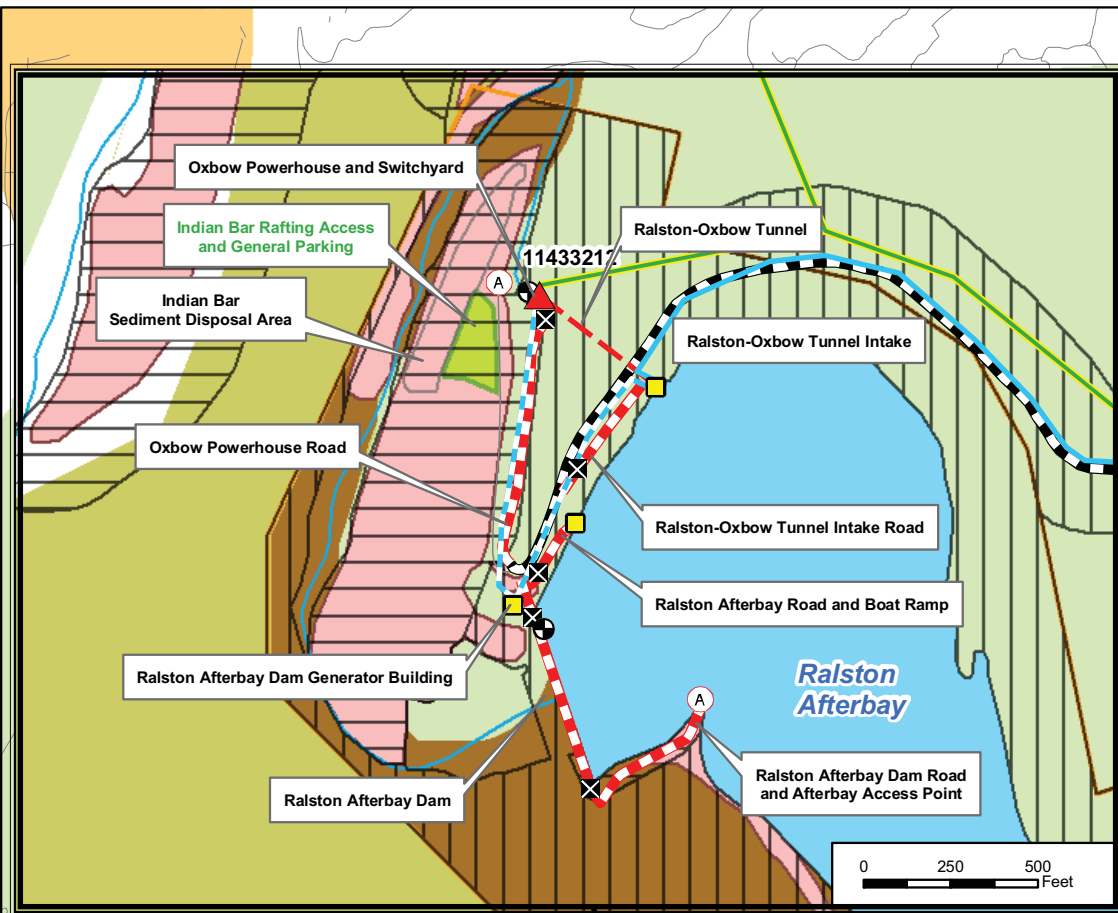
Map CUL 1-3
Cultural Resources Survey Area
Showing Survey Methods and Jurisdictions
Sheet 4 of 6
Interbay Area



0 0.25 0.5 Miles

Projection: Ca. Stateplane, Zone 2
Datum: NAD 83

Date: 3/23/09



Land Jurisdictions / Ownership*

- Eldorado National Forest
- Tahoe National Forest
- PCWA
- Lone Star Timber
- Sierra Pacific Industries**
- Other Private (Blank)

** Includes former properties of R.H. Emmerson & Son, LLC

* PARCEL DATA SOURCES:
Placer County, July 2006, El Dorado County, February 2007, USFS Region 5, February 2009.
Some data has been modified to account for known errors and is to be used for general planning purposes only.

PCWA Facilities and Features

- Dam
- Ancillary and Other Facilities
- Powerhouse
- Gage
- Penstock
- Tunnel
- Pipeline
- Gate
- Access Point
- Public Safety Fence
- FERC Boundary
- Water Supply Line (above ground)
- Water Supply Line (buried)

Project Power and Communication Lines:

- Communication
- Power
- Power (underground)
- Communication/Power
- Communication/Power (underground)

Transportation

- Non-Project General Access Road
- Project Road
- Project Trail
- Recreation Access Road
- Recreation Water Supply Facility Access Road or Trail
- Other Road

Project Recreation Facilities

- Picnic Area
- Boat Ramp
- Scenic Viewpoint
- Developed Campground
- Recreation Facility Footprints

Other Facilities

PG & E Transmission Lines:

- 230 kV
- 60 kV

Potential Betterments Features*

- Construction Staging or Work Areas
- Temporary Road Associated with Potential Project Betterments
- Permanent Road Associated with Potential Project Betterments

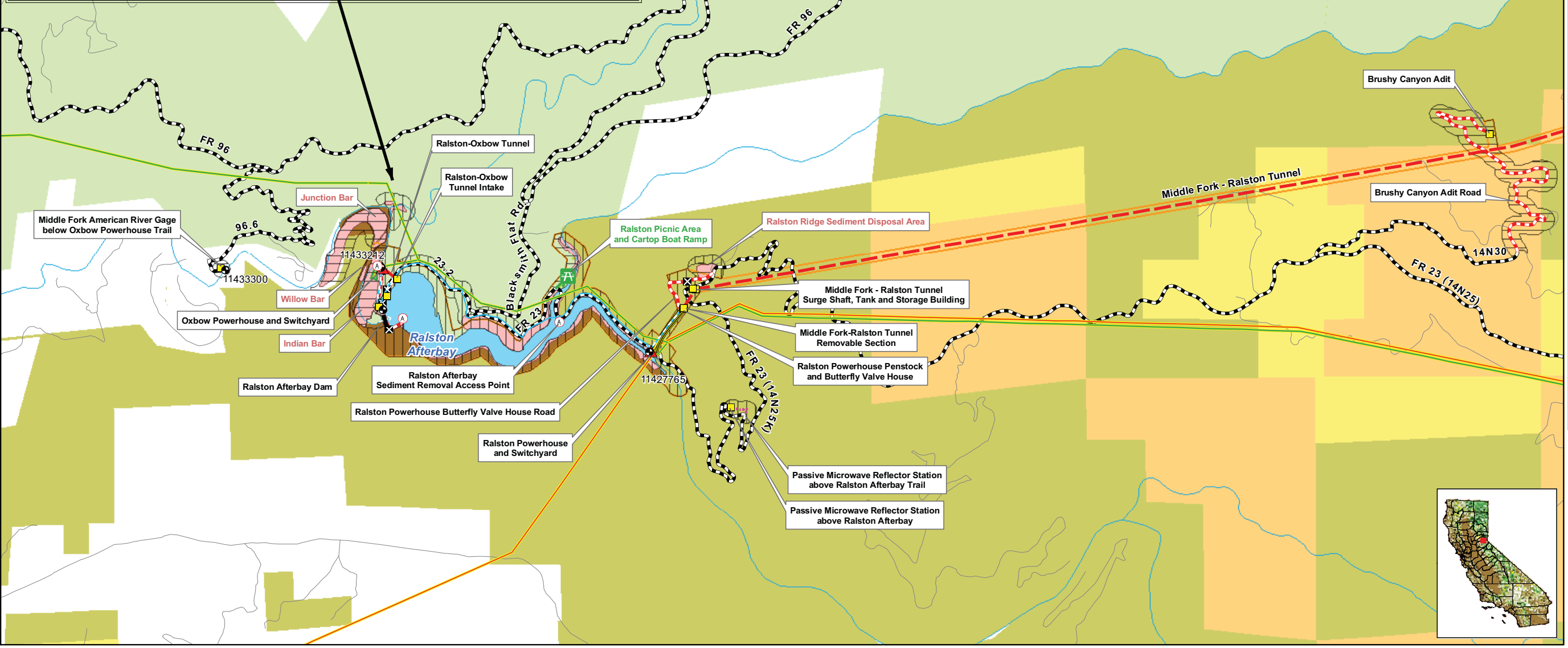
* The proposed Project betterments are currently under review. The final configuration will be provided to the stakeholders and included in the Final Technical Study Plans

Facilities and Dispersed Recreation Areas Identified by Stakeholders

- Recreation Access OHV Road
- Recreation Access Trail
- Trailhead
- Dispersed Concentrated Use Area
- Parking Area

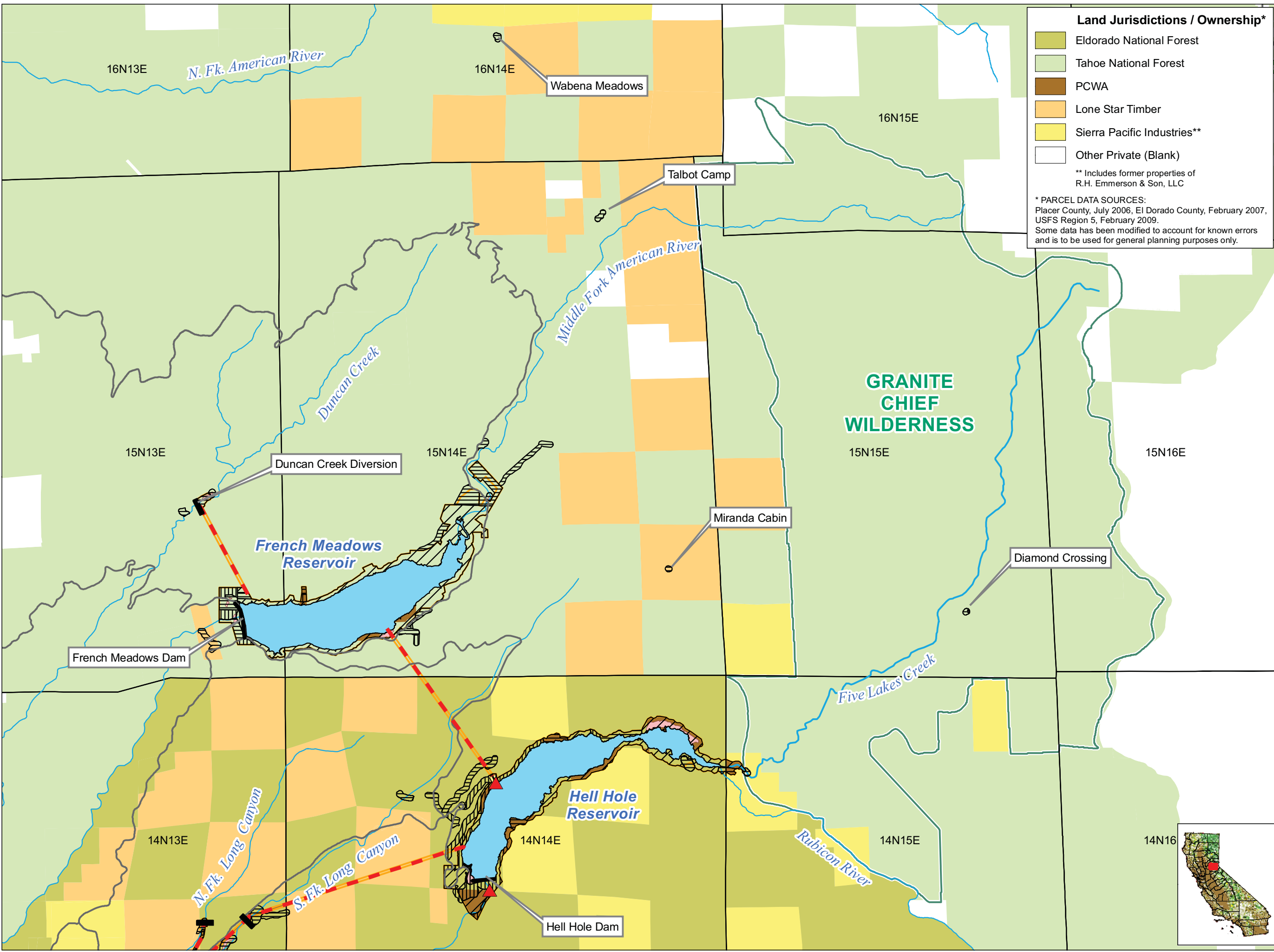
Archaeological Survey Methods

- Visual Reconnaissance
- Pedestrian Survey - Complete
- Pedestrian Survey - General
- Inaccessible Area



Placer County Water Agency
Middle Fork American River Project
Map CUL 1-3
Cultural Resources Survey Area
Showing Survey Methods and Jurisdictions
Sheet 5 of 6
Ralston, Oxbow Area

0 0.25 0.5 Miles
Projection: Ca. Stateplane, Zone 2
Datum: NAD 83
Date: 3/23/09



Land Jurisdictions / Ownership*

- Eldorado National Forest
- Tahoe National Forest
- PCWA
- Lone Star Timber
- Sierra Pacific Industries**
- Other Private (Blank)

** Includes former properties of R.H. Emmerson & Son, LLC

* PARCEL DATA SOURCES:
Placer County, July 2006, El Dorado County, February 2007, USFS Region 5, February 2009.
Some data has been modified to account for known errors and is to be used for general planning purposes only.

Project Facilities

- Powerhouse
- Dam
- Tunnel
- Penstock
- FERC Boundary

Transportation

- Roads

Hydrography


- Watercourse
- Water Body

Designated Boundary

- Wilderness Area


Archaeological Survey Methods

- Visual Reconnaissance
- Pedestrian Survey - Complete
- Pedestrian Survey - General
- Inaccessible Area




Placer County Water Agency
Middle Fork American River Project

Map CUL 1-3
Cultural Resources Survey Area
Showing Survey Methods and Jurisdictions
Sheet 6 of 6
Project Snow Courses



Date: 3/23/09



Projection: CA State Plane, Zone 2
Datum: NAD 83

