


- Project Facilities**
- Powerhouse
  - Dam
  - Tunnel
  - Penstock
- Transportation**
- Major Highway
  - Minor Highway
- Hydrography**
- Watercourse with river miles (5 mi. increments)
  - Water Body
  - Middle Fork American River Watershed\*
  - Inaccessible Stream Segment

- Study Site Locations**
- PCWA Benthic and Drift Macroinvertebrate Study Site
  - PCWA Benthic Macroinvertebrate Study Site
  - PCWA Drift Macroinvertebrate Study Site
  - Ralston Afterbay Sediment Management Project Monitoring Sites (CSBP)\*\*
  - Forest Service Monitoring Site\*\*\*

\*\*These sites were sampled using the California Stream Bioassessment Procedure (CSBP). All other sites sampled in 2007 used the current Surface Water Ambient Monitoring Program (SWAMP) protocol (see text for a discussion of sampling procedures).

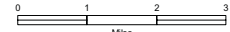
\*\*\*Prior to 2007, these sites were sampled using the California Stream Bioassessment Procedure (CSBP). In 2007, the Surface Water Ambient Monitoring Program (SWAMP) protocol was used (see text for a discussion of sampling procedures).



Placer County Water Agency  
Middle Fork American River Project

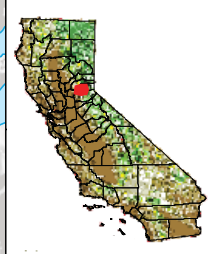
**Map AQ 3-1**

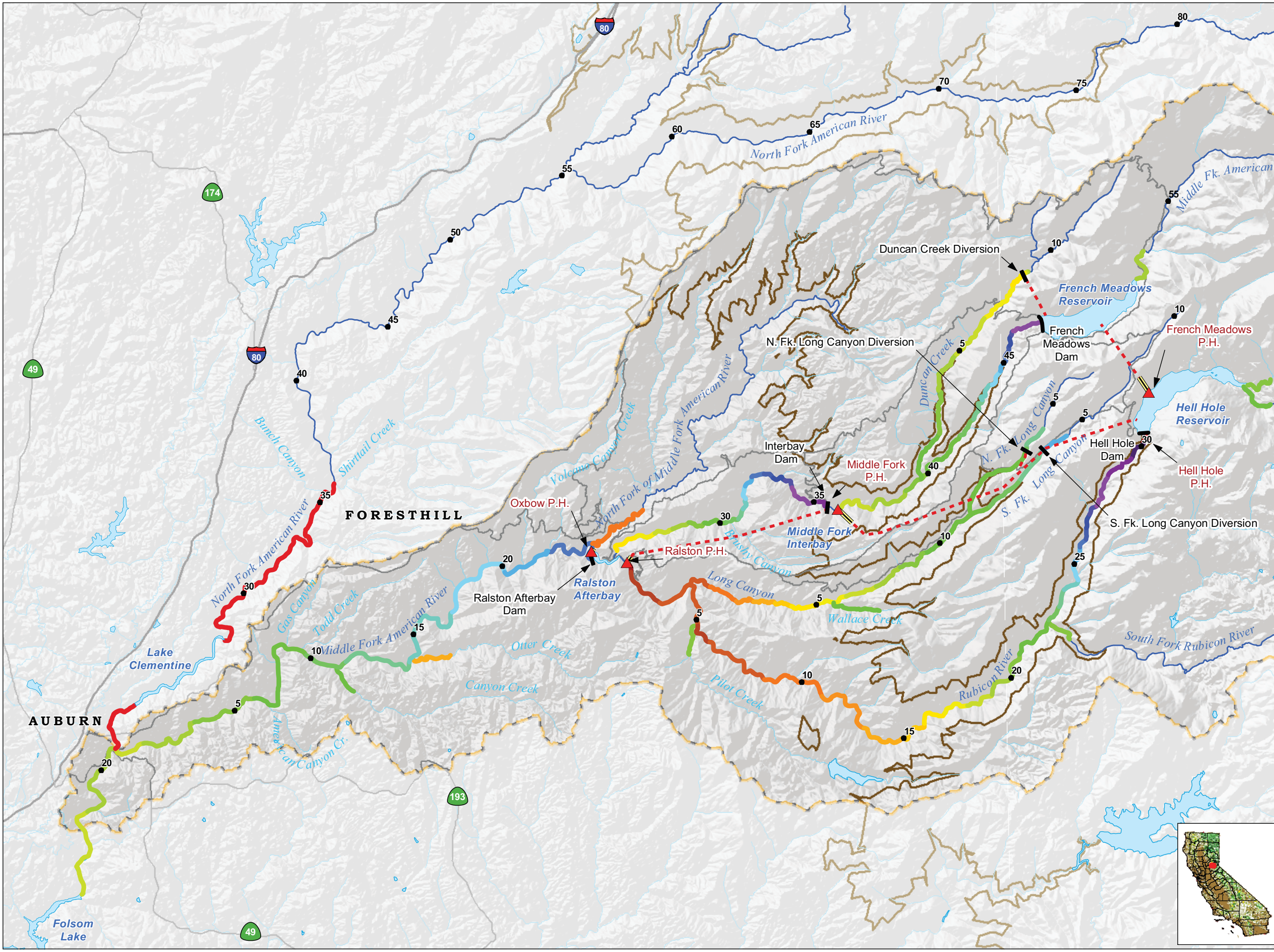
**Macroinvertebrate Sampling Sites**



Projection: CA State Plane, Zone 2  
Datum: NAD 83

Date: 4/24/08





**Project Facilities**

- ▲ Powerhouse
- Dam
- - - Tunnel
- === Penstock

**Transportation**

- Major Highway
- Minor Highway

**Hydrography**

- Watercourse with river miles (5 mi. increments)
- Water Body
- Middle Fork American River Watershed\*

\*Modified from Calwater Ver. 2.2 to represent drainage above high-water mark of Folsom Lake

— Inaccessible Stream Segments

**Hypsography**

- 4500' Elevation

**Average Water Temperature August 2007**

- 45 F
- 50 F
- 55 F
- 60 F
- 65 F
- 70 F
- 74 F

**PCWA**  
Placer County Water Agency  
Middle Fork American River Project

**Map AQ 3-2**  
**Average Water Temperatures in Study Streams August 2007**

0 1 2 3 Miles  
Projection: CA State Plane, Zone 2  
Datum: NAD 83  
Date: 12/13/2007

